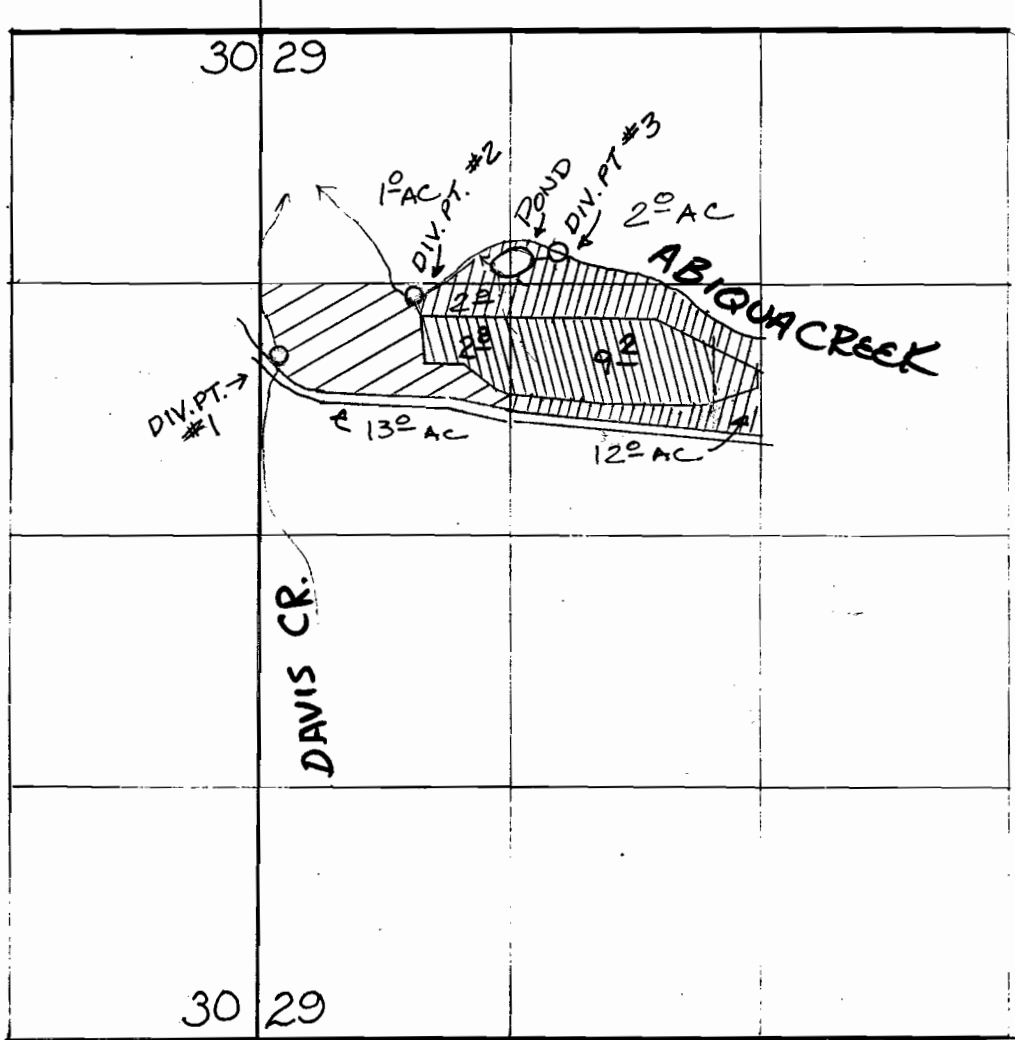


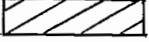


TOWNSHIP 6 SOUTH, RANGE 1 EAST, WM
 SCALE 8" = 1 MILE

RECEIVED

MAY 22 1987
 WATER RESOURCES DEPT
 SALFM ORFCON

Application No. 69106
 Permit No. 50011



-  PRIMARY DAVIS CREEK - WITH ANY DEFICIENCY TO BE MADE UP FROM ABIQUA CR.
-  SUPPL DAVIS CREEK TO CERT # 28117
-  PRIMARY ABIQUA CREEK - WITH ANY DEFICIENCY TO BE MADE UP FROM DAVIS CR.

DIVERSIONS LOCATED: #1 - 1700 ft S & 100 ft E;
 #2 - 1400 ft S & 800 ft E; #3 - 1200 ft S.
 & 1550 ft E.; ALL FROM THE NW
 CORNER SECTION 29