

RECEIVED
APR 24 1987
WATER RESOURCES DEPT.
SALEM, OREGON

Section 23 T.19S.R.12W.W.M.

LANE COUNTY

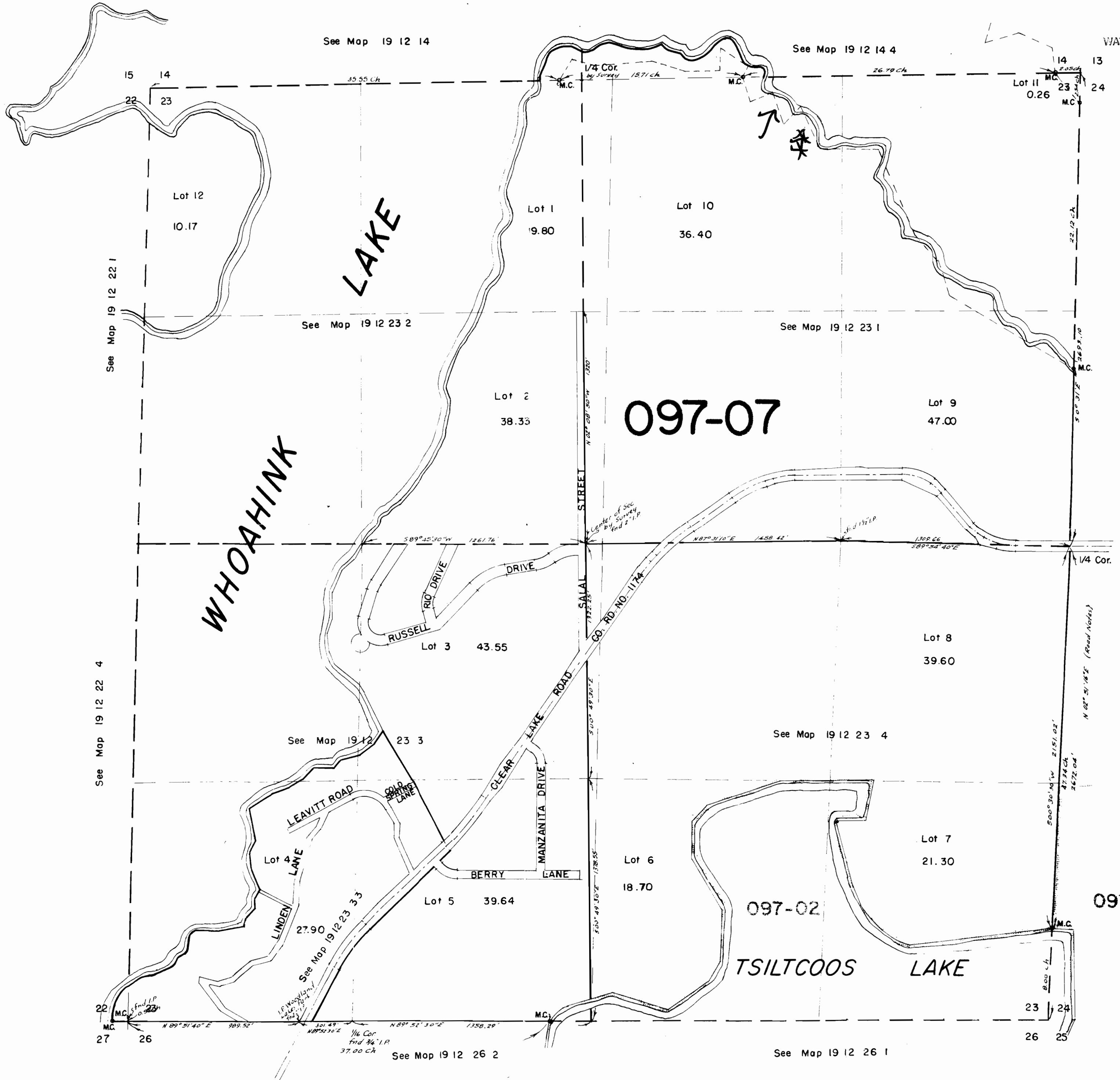
1" = 400'

Application No. 69007
Permit No. 50024

19 12 23
& INDEX
RECEIVED

MAR 27 1987

WATER RESOURCES DEPT.
SALEM, OREGON



See Map 19 12 22 1
See Map 19 12 23 2
See Map 19 12 23 1
See Map 19 12 22 4
See Map 19 12 23 3
See Map 19 12 23 4
See Map 19 12 26 2

See Map 19 12 24

(Road Notes)

See Map 19 12 26 1