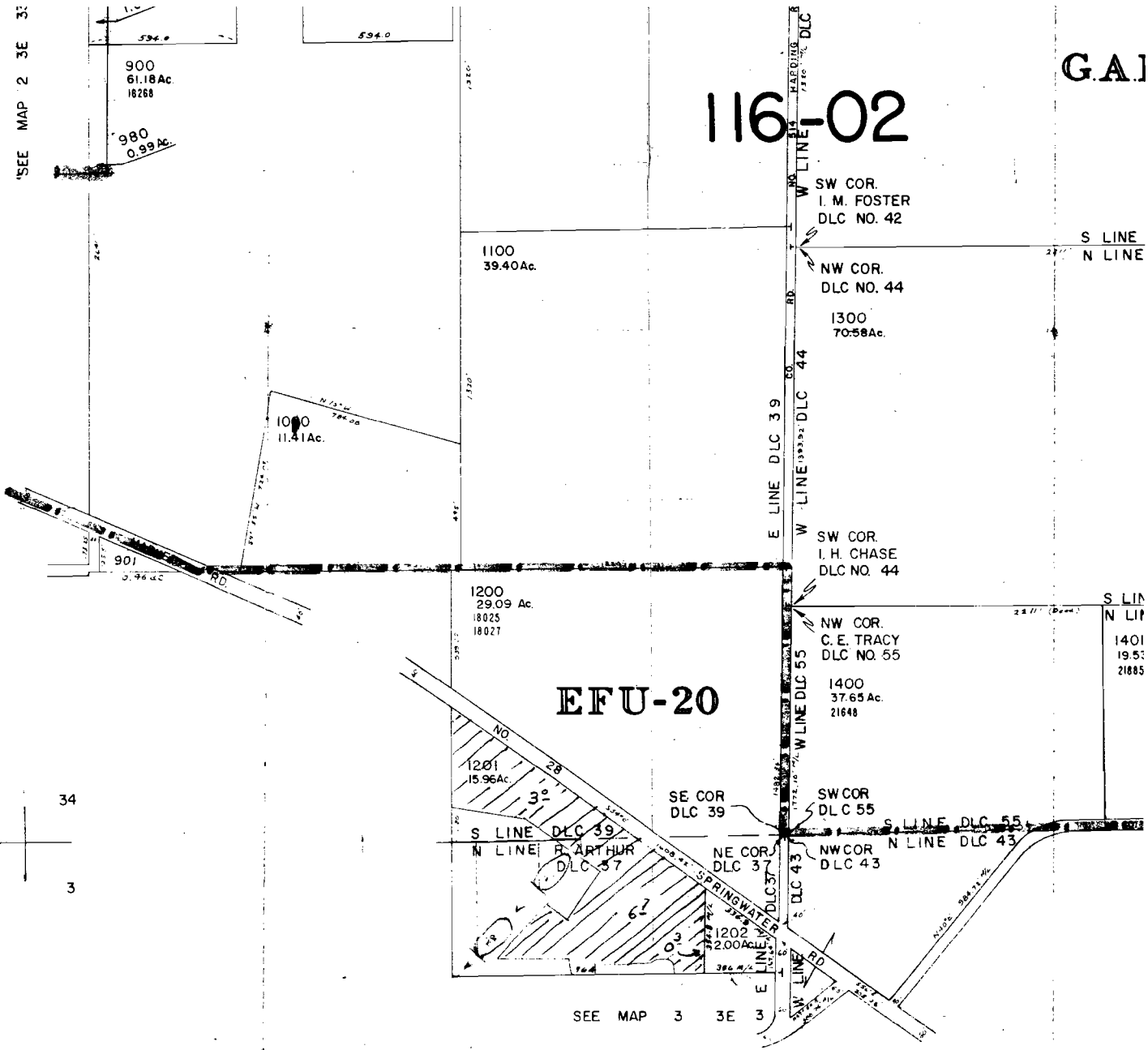


G.A.I

116-02

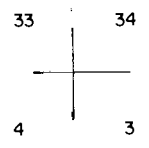


SEE MAP 2 3E 3

SEE MAP 3 3E 3

EXISTING RES. #1 (DAM): 200' S & 850' W FROM
THE NE CORNER OF
DLC 37

PROPOSED RES. #2 (DAM): 450' S & 1075' W FROM
THE NE CORNER OF
DLC 37



Application No. R-69027 & 69028
Permit No. R10831 50029