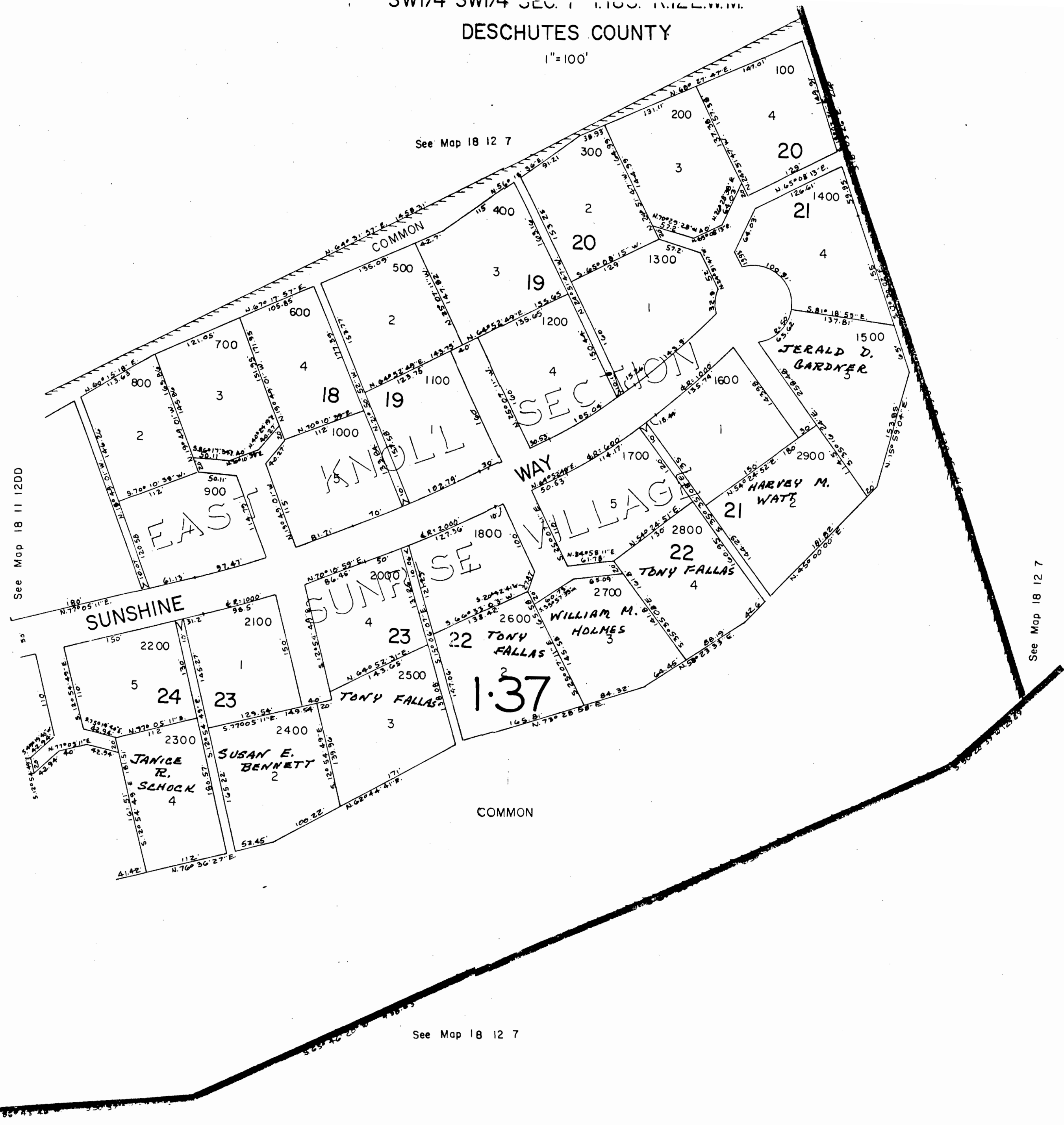


DESCHUTES COUNTY

1"=100'

See Map 18 12 7



See Map 18 11 1200

See Map 18 12 7

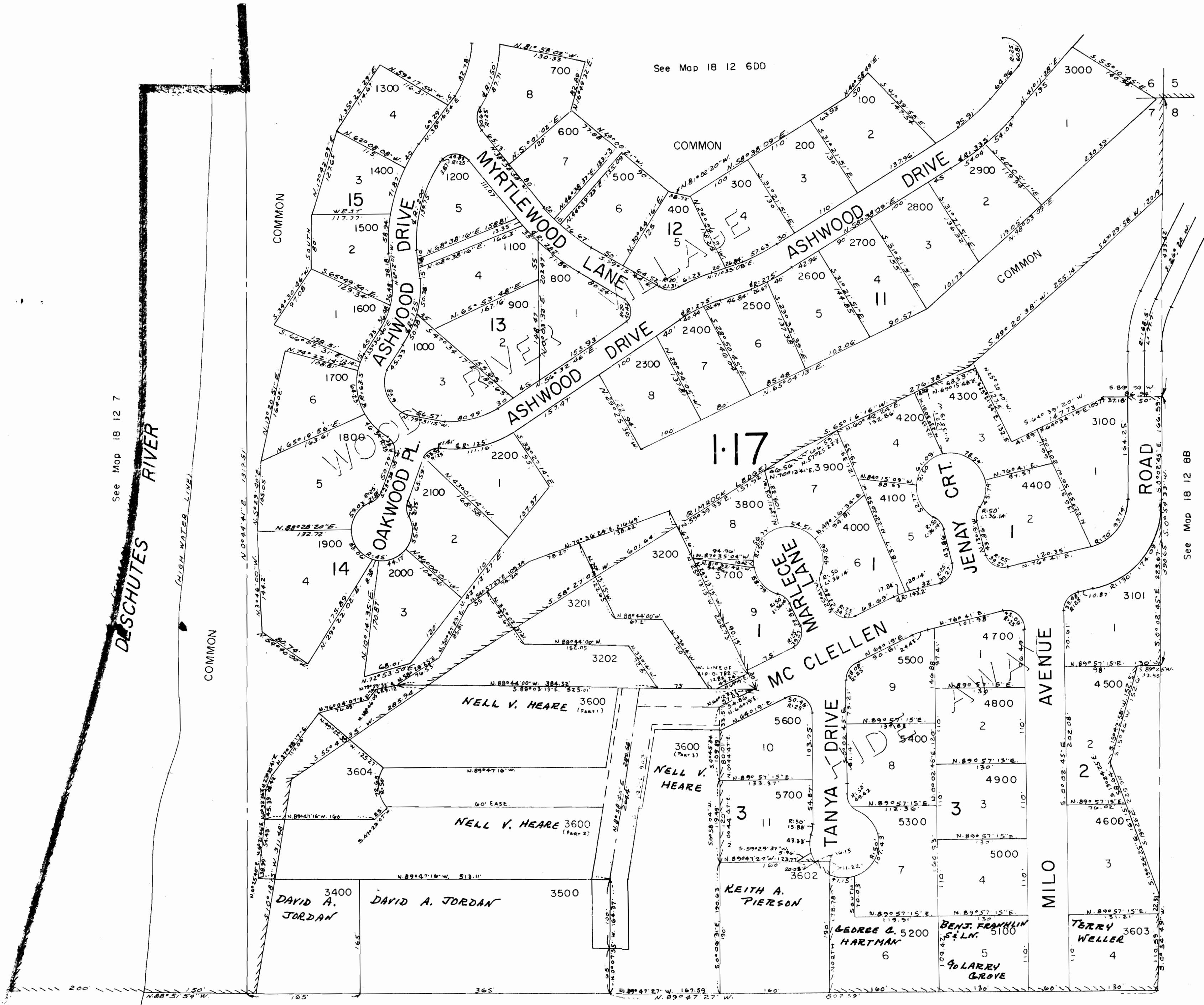
See Map 18 12 7

NE1/4 NE1/4 SEC. 7 T.18S. R.12E.W.M.  
DESCHUTES COUNTY

dead numbers 3300, 3601

18 12 7AA

1"=100'



See Map 18 12 7

DESCHUTES RIVER

(HIGH WATER LINE)

COMMON

See Map 18 12 6DD

COMMON

COMMON

See Map 18 12 8B

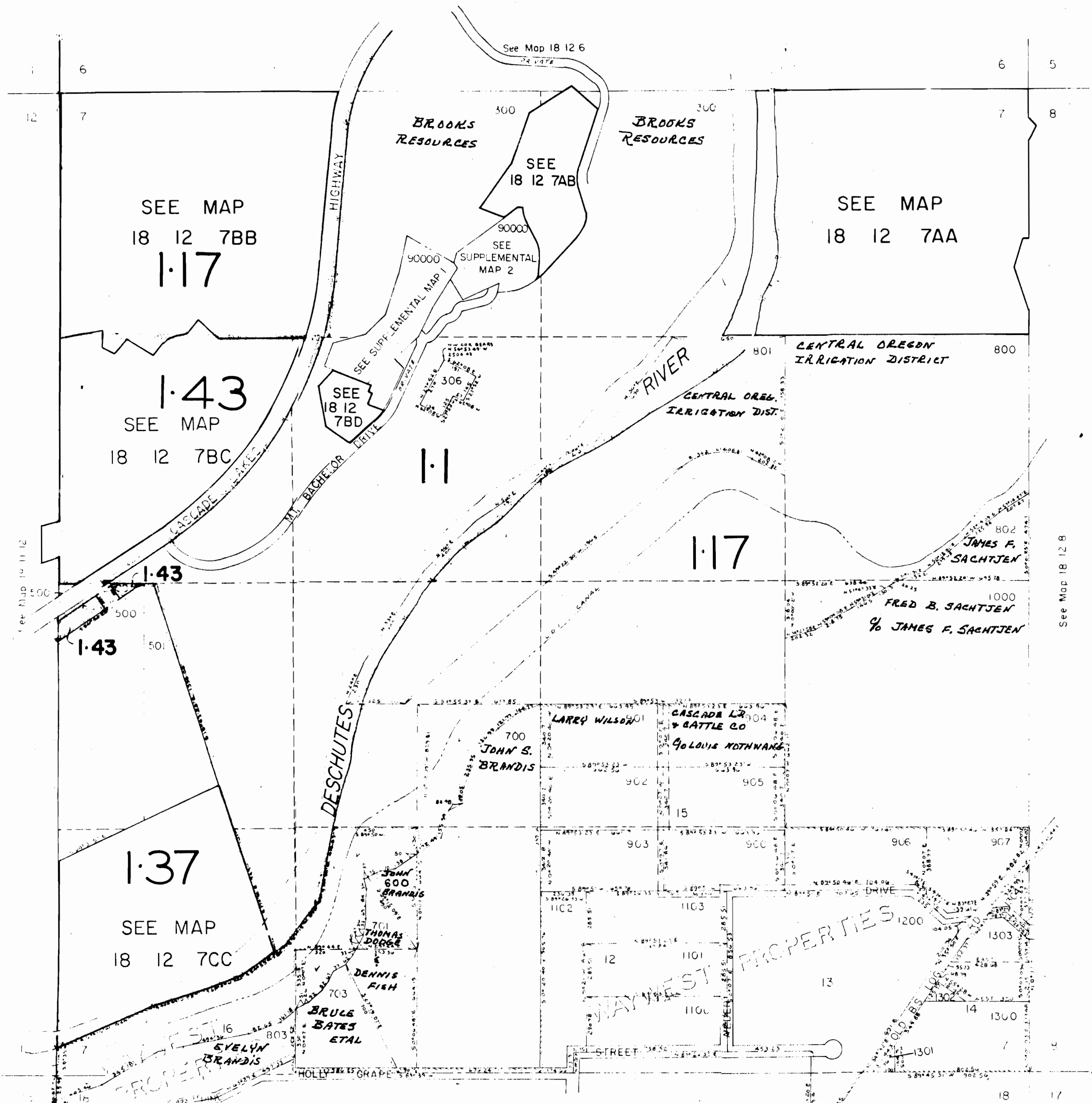
See Map 18 12 7

SECTION 7 T.18S. R.12E.W.M.  
DESCHUTES COUNTY

deed numbers 199, 100 thru 205, 301 thru 305,  
307, 308, 309, 310, 399, 400,  
401, 502, 601, 702, 1001, 311

18 12 7  
updated 10/2/19

1"=400'



See Map 18 11 12

See Map 18 12 8

SEE MAP  
18 12 7BB  
**1.17**

**1.43**  
SEE MAP  
18 12 7BC

**1.43**  
**1.43**

**1.37**  
SEE MAP  
18 12 7CC

**BROOKS  
RESOURCES**

**BROOKS  
RESOURCES**

SEE MAP  
18 12 7AA

**CENTRAL OREGON  
IRRIGATION DISTRICT**

**CENTRAL OREG.  
IRRIGATION DIST.**

**JAMES F.  
SACHTJEN**

**FRED B. SACHTJEN  
% JAMES F. SACHTJEN**

SEE  
18 12 7AB

90000  
SEE  
SUPPLEMENTAL  
MAP 2

SEE  
18 12  
7BD

**1.1**

**1.17**

**JOHN S.  
BRANDIS**

**JOHN  
BRANDIS**

**THOMAS  
DODGE**

**DENNIS  
FISH**

**BRULE  
BATES  
ETAL**

**EVELYN  
BRANDIS**

**LARRY WILSON**

**CASCADE L.R.  
& BATTLE CO.**

**LOUISE NOTNWALD**

**WEST  
PROPERTIES**

**WEST  
PROPERTIES**

**HOLLY GRAPE**

**STREET**

**OLD BS**