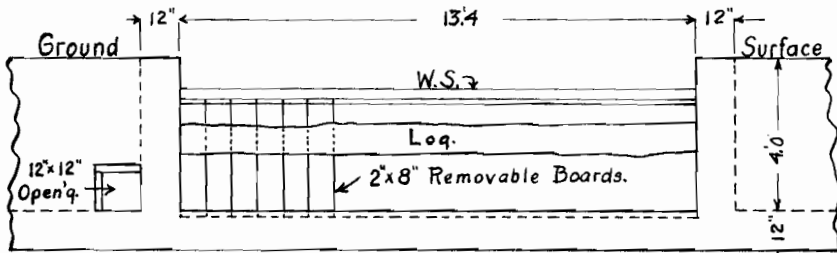
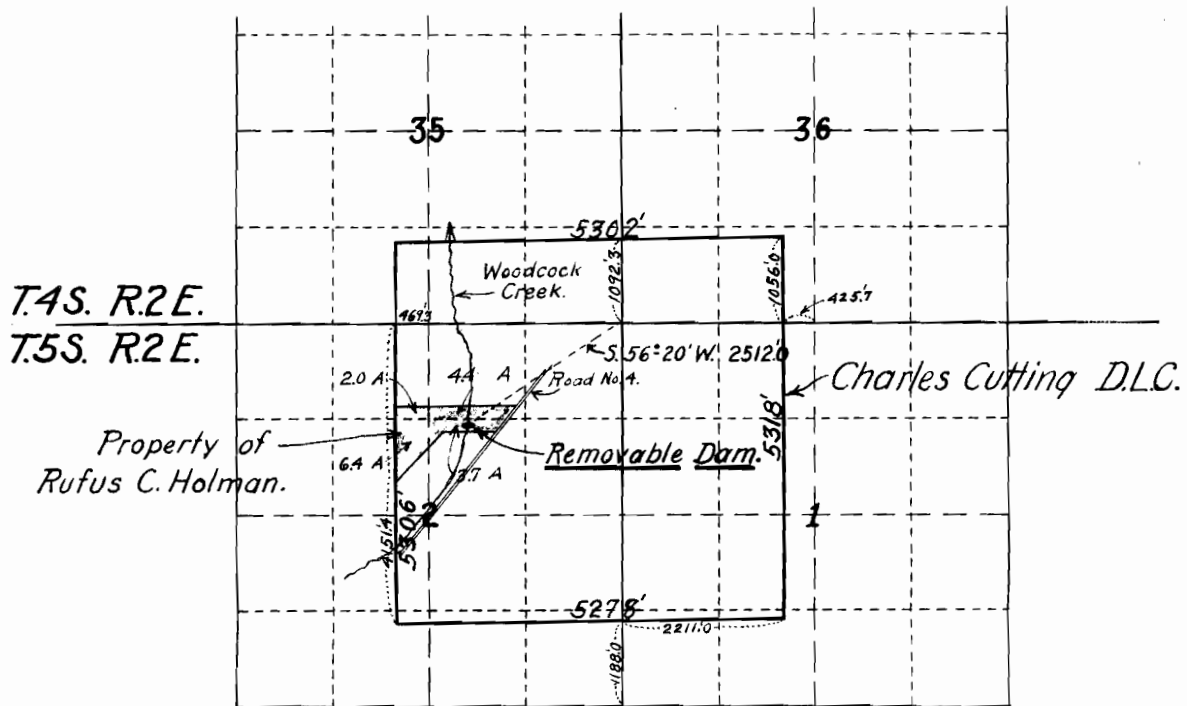


I, John H. Lewis, of Portland, Ore. do hereby certify that this map was made from notes taken during an actual survey made by me (or under my immediate supervision) on April 16, 1921, and that it correctly represents the works described in the accompanying application, together with the location of streams and other ditches in the immediate vicinity.

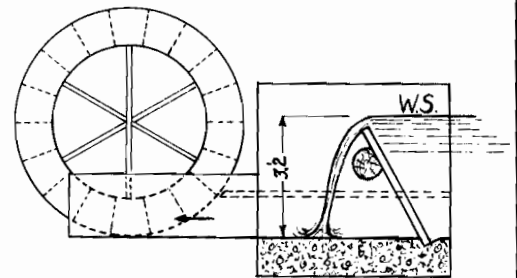
*John H. Lewis*  
Reg. Eng'r. No. 4.

**MAP**  
**To ACCOMPANY APPLICATION No. 7830**  
**By**  
**RUFUS C. HOLMAN**  
**FOR THE APPROPRIATION OF WATER.**  
**SCALE 1" = 1/2 MILE**      **APR. 27, '21.**

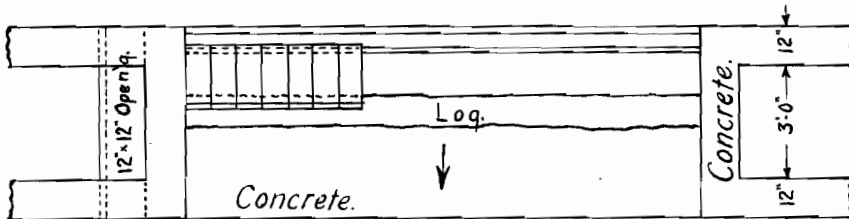
Lewis & Clark, Consulting Engineers,  
805 Ch. of Com. Bldg. Portland, Oregon.



ELEVATION



SECTION



PLAN

**DETAILS OF REMOVABLE DAM**  
Scale 1" = 5'

A wooden water-wheel 6' or more in diameter to be installed on right bank of stream and operated either as an over-shot or under-shot wheel.

Lewis & Clark, Consulting Engineers,  
805 Cham. Of Com. Bldg. Portland, Ore.      Reg. Eng'r. No. 4.

7830

5045