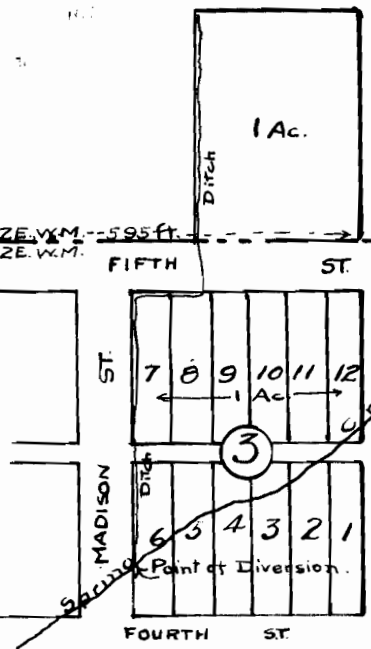
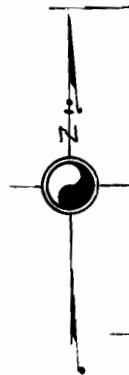


S.W. Cor. SE 1/4 S.W. 1/4 Sec. 11

1/4 - SEC. 11, T.1N. R.42E. W.4M. --- 595 ft. ---
SEC. 14, T.1N. R.42E. W.4M. FIFTH ST.



MAP

Accompanying Application
of N. Cameron of Wallowa,
Ore, for Permit to appropriate
water. Scale: 200' = 1"

I, Lewis A. Stanley, of Enterprise, Ore, do
hereby certify that this map was made by
me and that it shows correctly the lands
which it is proposed to irrigate,

Lewis A. Stanley.

May 21, 1921

7906
50:2