

RECEIVED

DEC 07 1987

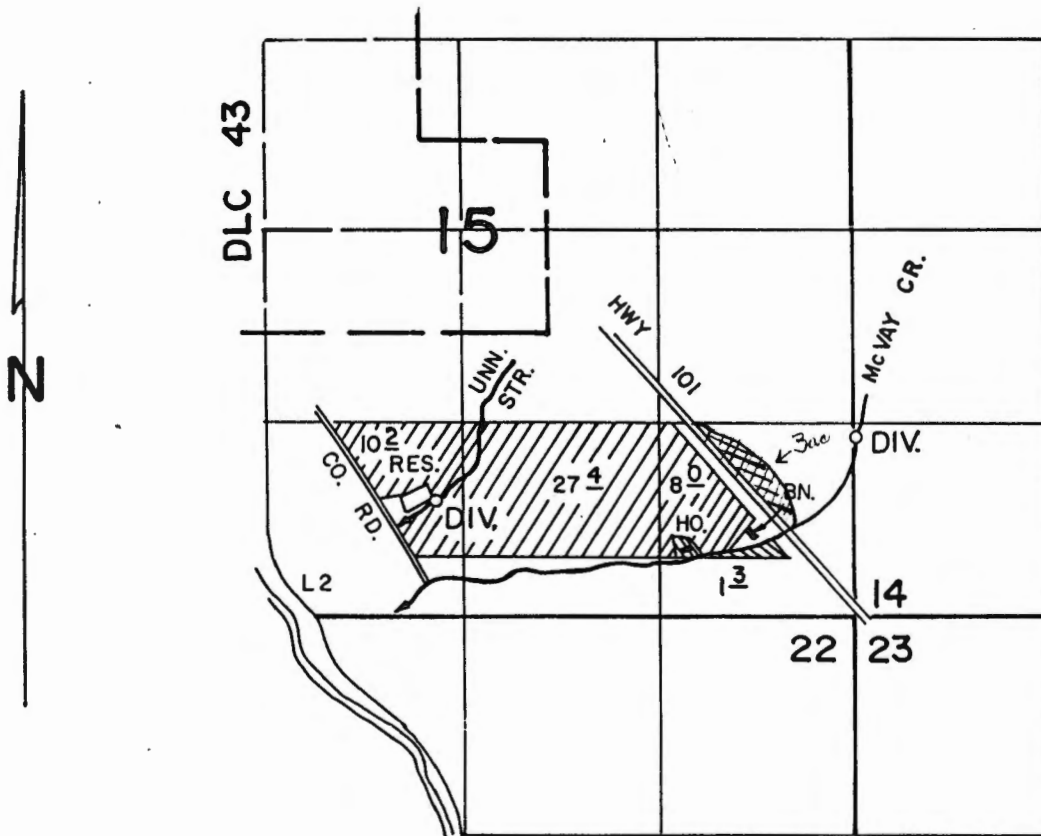
WATER RESOURCES DEPT.
SALEM, OREGON




T.41S., R.13W., W.M.

RECEIVED

JUL 20 1987

WATER RESOURCES DEPT.
SALEM, OREGON



-  Lands to receive primary source from reservoir and unimpaired stream and supplemental supply from McVay Creek
-  EXISTING RIGHT McVay Creek
-  Lands to receive a supplemental supply from McVay Creek

McVAY CREEK DIV. LOC. 1280'N. & 40'E. FROM SW CORNER SEC. 14

Ries, Dir. Loc. 550'S. & 190'W. FROM CS 1/16 Cor. Sec. 15

Application No. 69197

Permit No. 50830