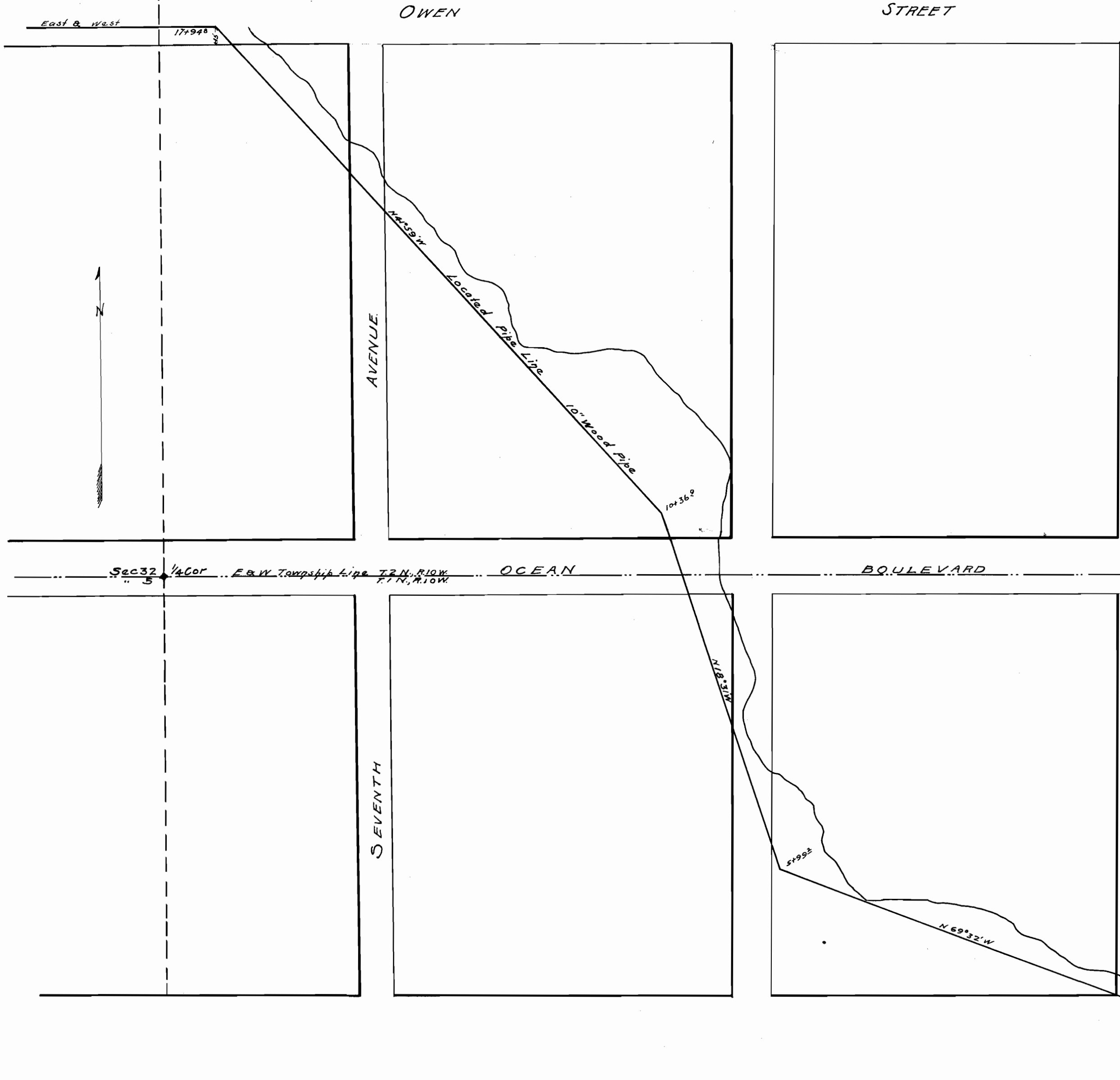


MAP  
 SHOWING THE LOCATION  
 of the  
**ROCKAWAY BEACH CO'S**  
 WATER RIGHT & PROPOSED PIPELINE  
 Scale 1"=100 ft.



Intake  
 553.2' South and 1274.78' East  
 of the 1/4 Sec Cor. between  
 Secs 5, T.1N, R.10W. and 32  
 T.2N, R.10W. W.M.