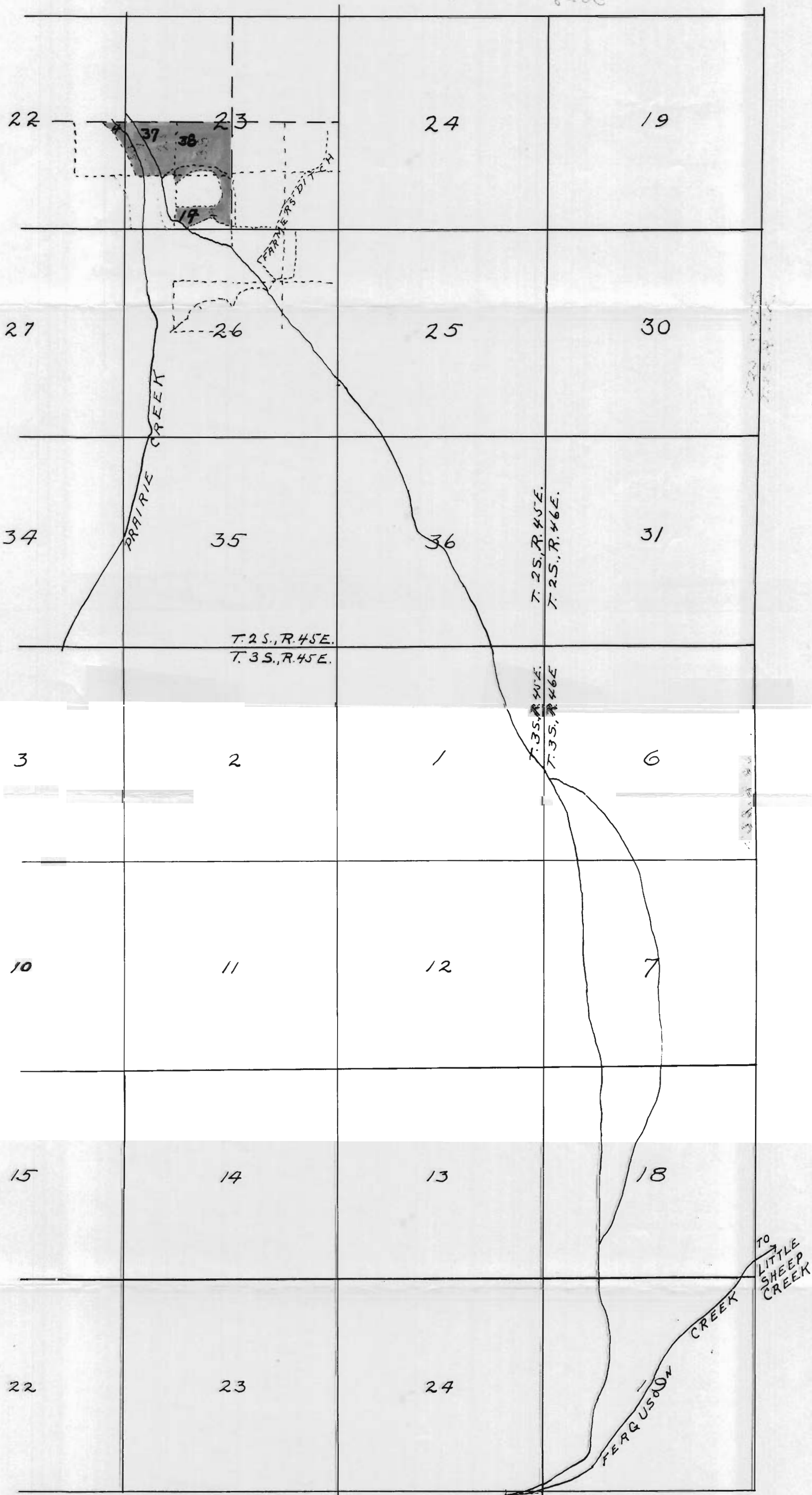


THIS MAP COPIED FROM OFFSITE  
FILE 5628.

PLACED IN FILE 1/29/98

5628



I, Arthur H. Rudd, of Joseph, Oregon, do hereby certify that this map was made from notes taken during an actual survey made by me on July 14, 1917, and that it correctly represents the works described in the accompanying application, together with the location of streams and other ditches in the immediate vicinity, and has written thereon the area in each smallest legal subdivision which it is proposed to irrigate.

Arthur H. Rudd.  
Surveyor.

5628  
3491

S-7955  
S-5112