

Application No. 69507

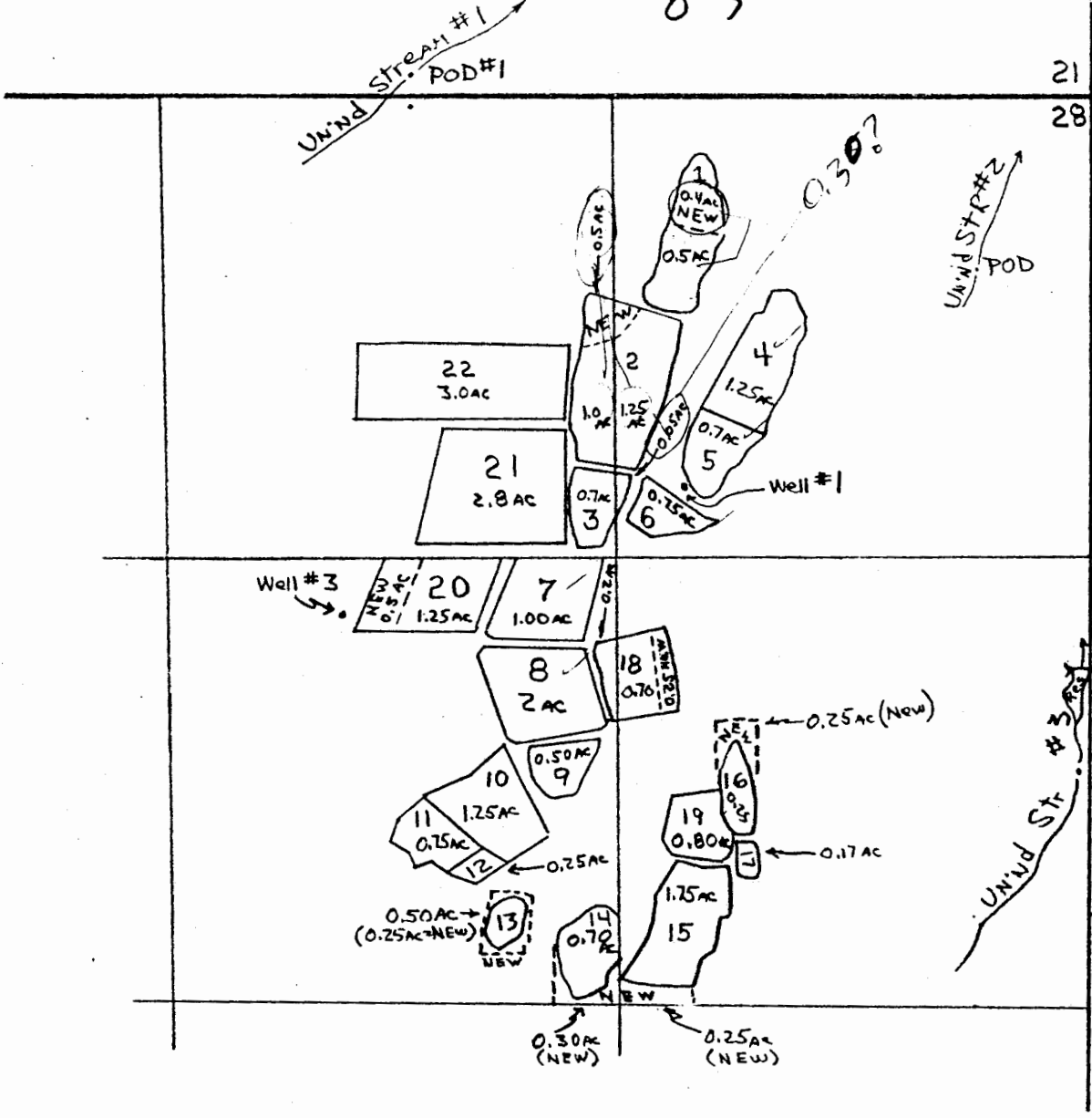
Permit No. 51271

01
03

21 22

28 27

T28S R14



- UN'nd Str #1, POD = 60'N, 1910'W From NE Cor Sec 28 w/in SW¹/₄ SE¹/₄ Sec 21
- UN'nd Str #2, POD = 490'S, 330'W From NE Cor Sec 28 w/in NE¹/₄ NE¹/₄ Sec 28
- UN'nd Str #3, Res = 1630'S 40'W From NE Cor Sec 28 w/in SE¹/₄ NE¹/₄ Sec 28
- Well #3, POD = 1480'S, 2100'W From NE Cor Sec 28 w/in SW¹/₄ NE¹/₄ Sec 28
- Well #1, POD = 1100'S, 1570'E From N Cor Sec 28 w/in NE¹/₄ NE¹/₄ Sec 28