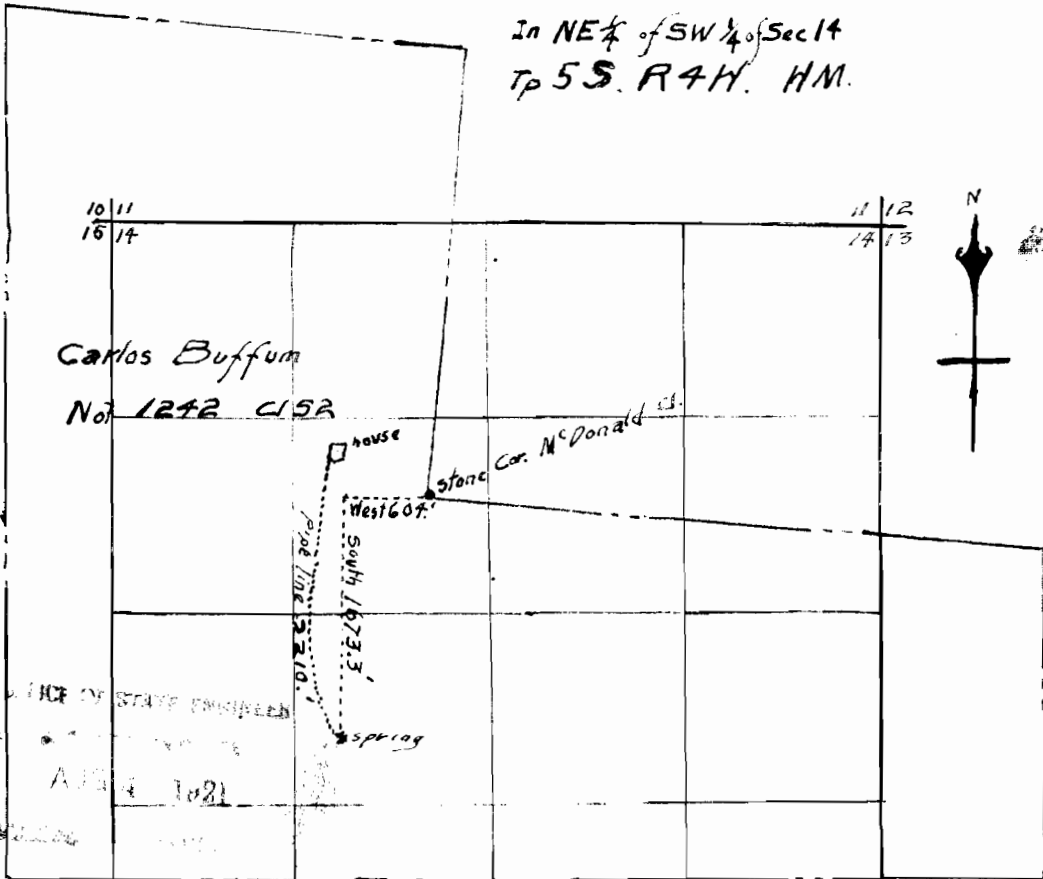


1945

WRIGHT'S SPRING "A"

In NE $\frac{1}{4}$ of SW $\frac{1}{4}$ of Sec 14
Tp 5 S. R 4 W. HM.

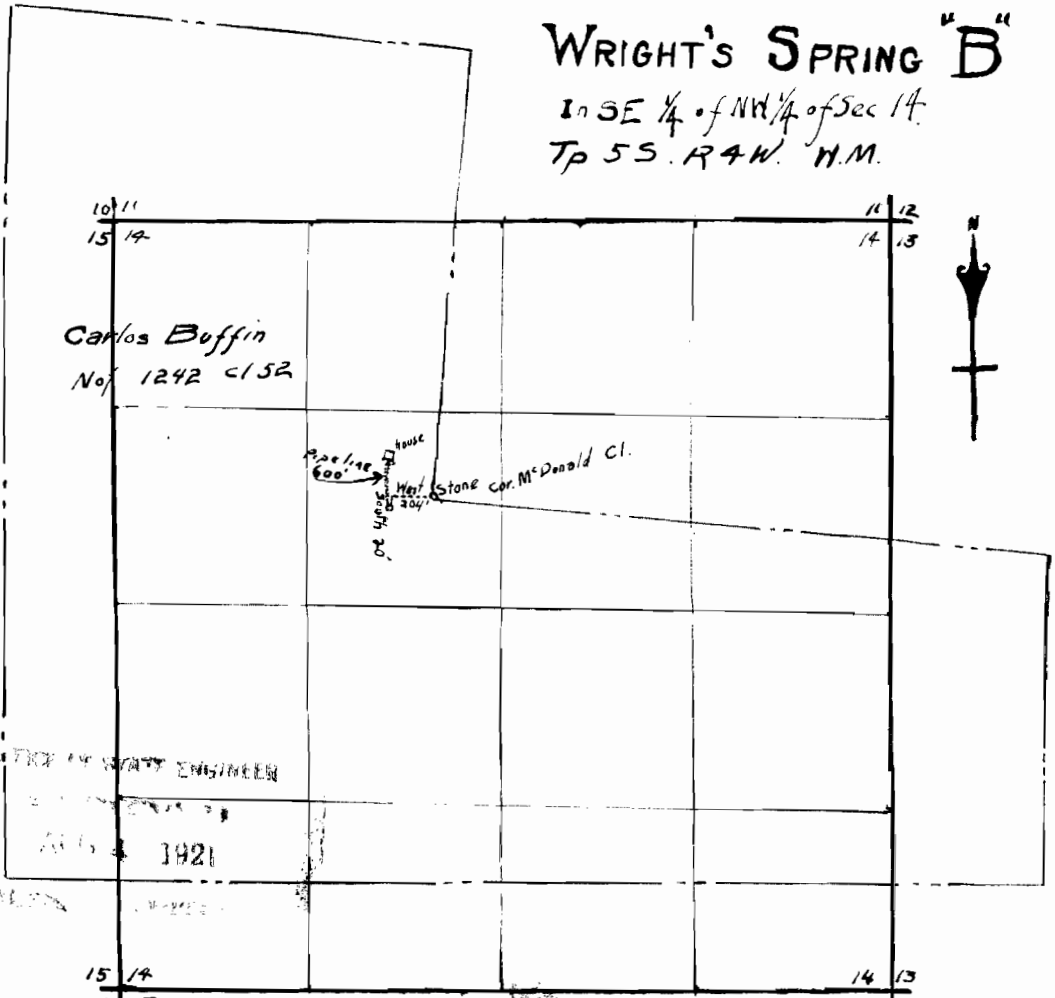


5161

194

WRIGHT'S SPRING "B"

In SE 1/4 of NW 1/4 of Sec 14.
Tp 5S. R4W. N.M.



10 11
15 14

11 12
14 13

Carlos Buffin
No. 1242 C152

Pipe line 600
house
Well
Stone cor. McDonald Cl.



WRIGHT ENGINEER

1921

15 14
22 23

14 13
23 24

5161

