

RECEIVED

SEP 28 1992

WATER RESOURCES DEPT. SALEM, OREGON

App# 72739
Permit 51835

See Map 19 12 24

CANCELLED 1699



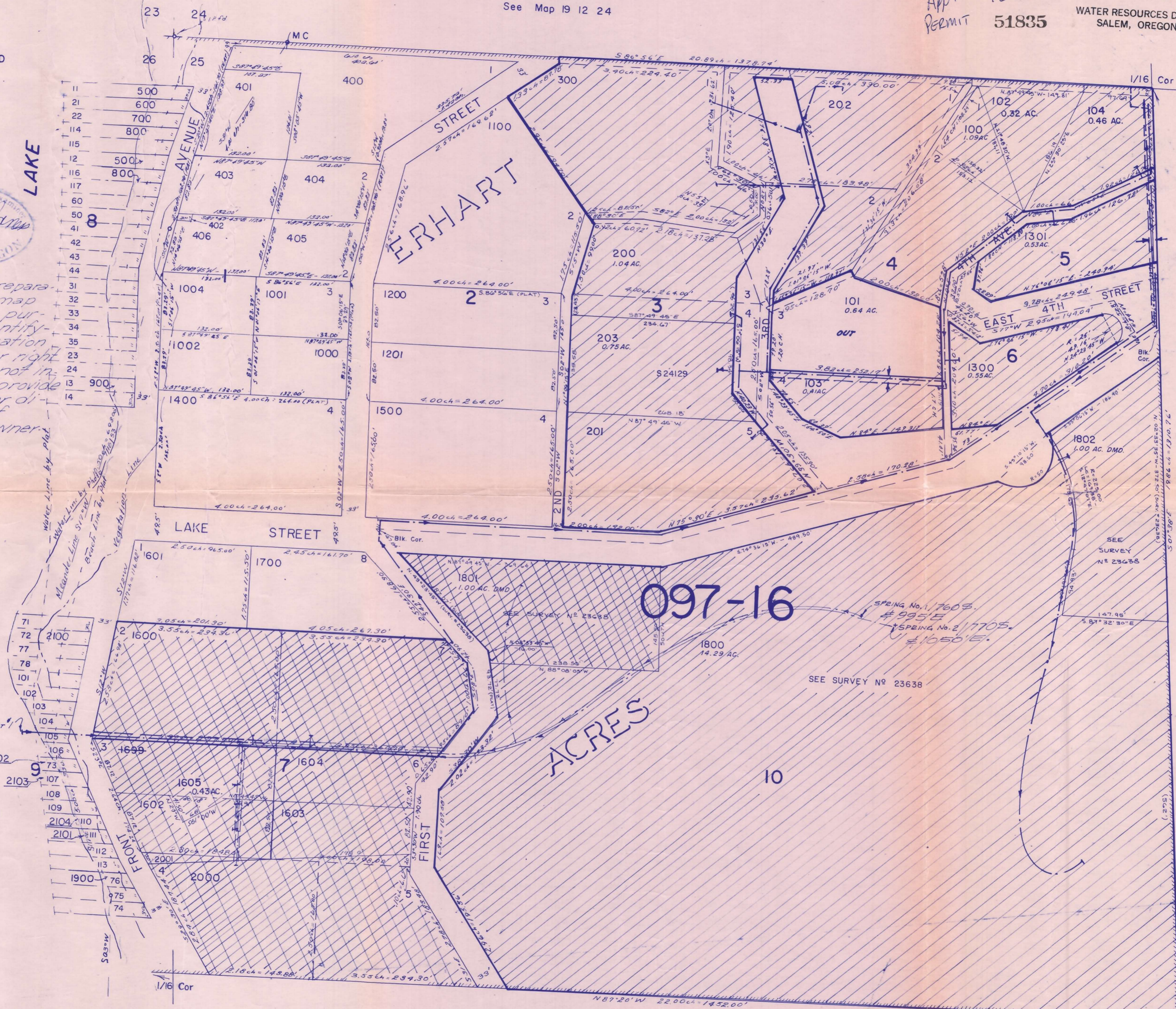
NOTE: The preparation of the map was for the purpose of identifying the location of the water right only. It is not intended to provide location nor dimension of property ownership lines.

See Map 19 12

CODE LINES	
	CITY LIMITS
	SCHOOL BOUNDARY
	ALL OTHER CODES

Division Point 1/4
950' South
and 220' West
of NW corner
Section 25

TSILTCOOS



097-16

ACRES

10

See Map 19 12 25

1/16 Cor