

THIS MAP WAS PREPARED FOR ASSESSMENT PURPOSE ONLY.

SE 1/4 SEC. 13 T. 22S. R. 10W. W.M.
DOUGLAS COUNTY

1" = 200'

Application No. 72405
Permit No.

SEE MAP 22 10 13

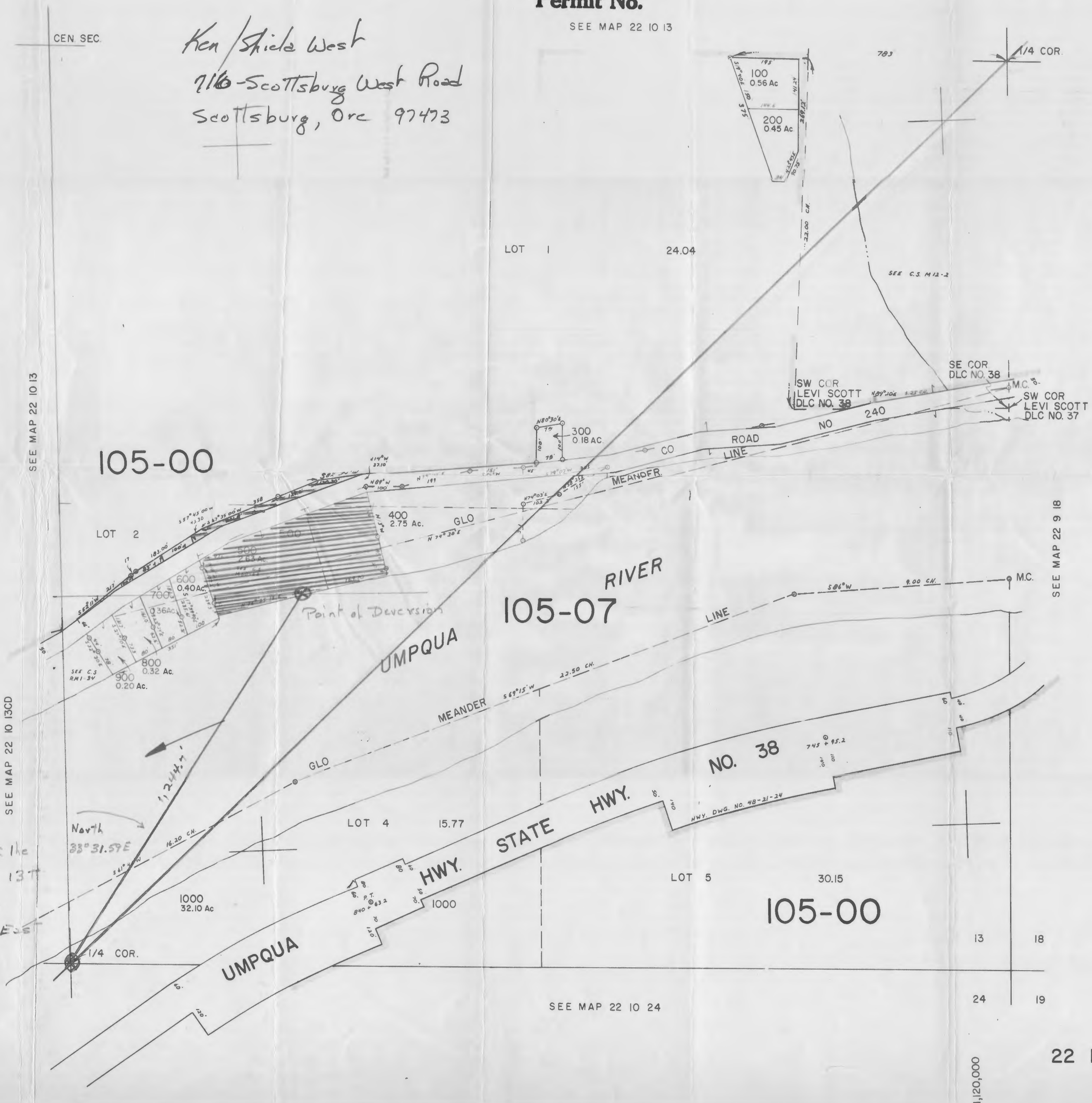
RECEIVED

JUN 10 1992

WATER RESOURCES DEPT.
SALEM, OREGON

22 10 13D

Ken / Sheila West
716-Scottsburg West Road
Scottsburg, Ore 97473



SEE MAP 22 10 13

SEE MAP 22 10 13CD

SEE MAP 22 9 18

*
From S 1/4 Corner of the
S.E. 1/4 of Section 13 T
22S R 10 W.W.M.,
North 33° 31.59' East
1,244.7 ft.

SEE MAP 22 10 24

22 10 13D

1,120,000

741,000