

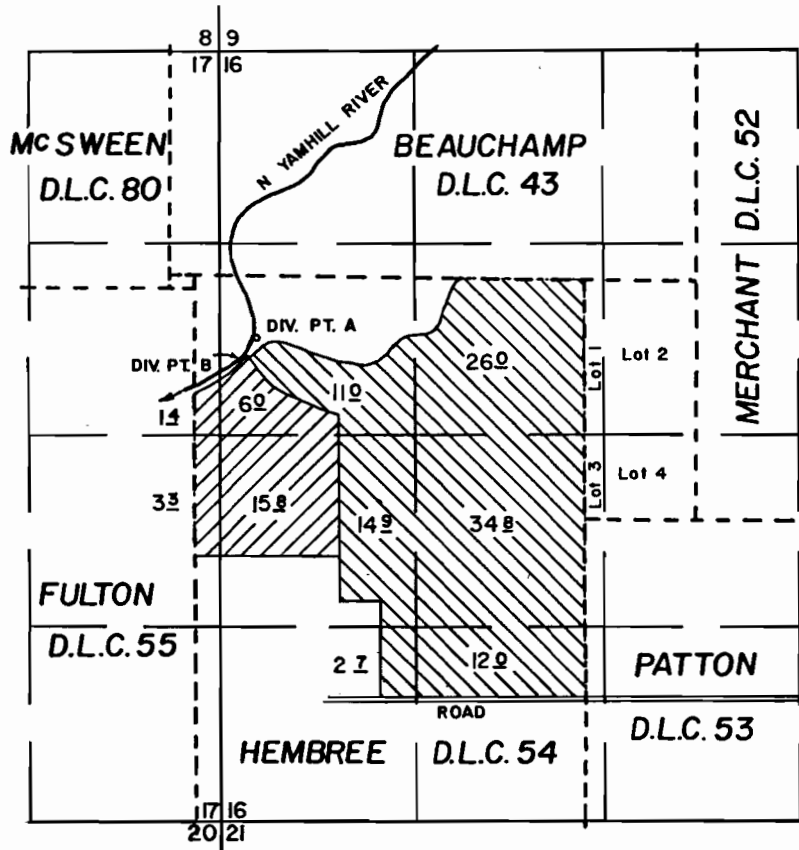
**RECEIVED**

JUL 2 1 1992

WATER RESOURCES DEPT.  
SALEM, OREGON

**T.3S. R.4W. W.M.**

YAMHILL COUNTY



DIV. PT. B LOCATION: SW 1/4 NW 1/4 SEC.16 WITHIN HEMBREE D.L.C. 54 TRANSFER TO DIV. PT. A  
DIV. PT. A LOCATION: 380' S & 2240' W OF NE. COR. D.L.C. 54

**APPLICATION TO APPROPRIATE SURFACE WATER**

Application No 17660  
58735  
70213 Permit No 13354  
44209  
51848

**BAILEY NURSERIES INC.**

FEBRUARY 5, 1990  
SCALE 1" = 1320'

