

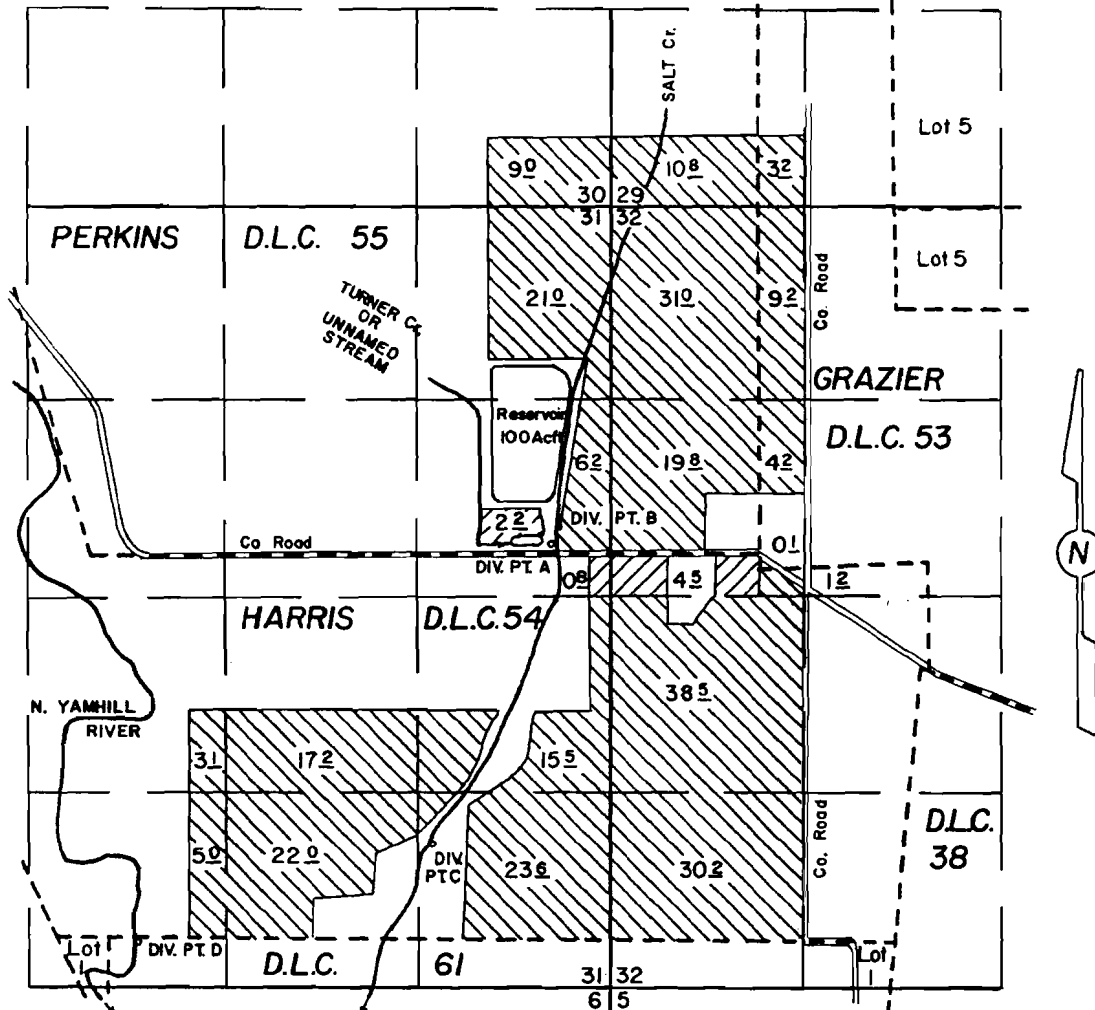
RECEIVED

MAR 02 1990

T. 2 S. R. 4 W. W. M.

YAMHILL COUNTY

WATER RESOURCES DEPT.  
SALEM OREGON



DIV. PT. A LOCATION: 50' N & 1420' W OF S.E. COR. PERKINS D.L.C. 55

DIV. PT. B LOCATION: 220' N & 1390' W OF S.E. COR. PERKINS D.L.C. 55

DIV. PT. C LOCATION: 1960' S & 2260' W OF S.E. COR. PERKINS D.L.C. 55

DIV. PT. D LOCATION: 2590' S & 4280' W OF S.E. COR. PERKINS D.L.C. 55 (2180' S)

NOTE: CORRECTION ON S DISTANCE. LOCATION CORRECT  
CORRECTION CERTIFICATE No.

APPLICATION TO APPROPRIATE SURFACE WATER

R-25390  
24477  
R-45354  
45355  
52898

R-1197  
19292  
R-5378  
33951  
39919

Application No. \_\_\_\_\_ Permit No. \_\_\_\_\_

UNLESS NOTED ALL AREAS SHOWN

Application No. 70215

Permit No. 51934

BAILEY NURSERIES INC.

FEBRUARY 5, 1990

SCALE 1" = 1320'

