

NE 1/4 Sec 9, T36S R14W WM
CURRY COUNTY

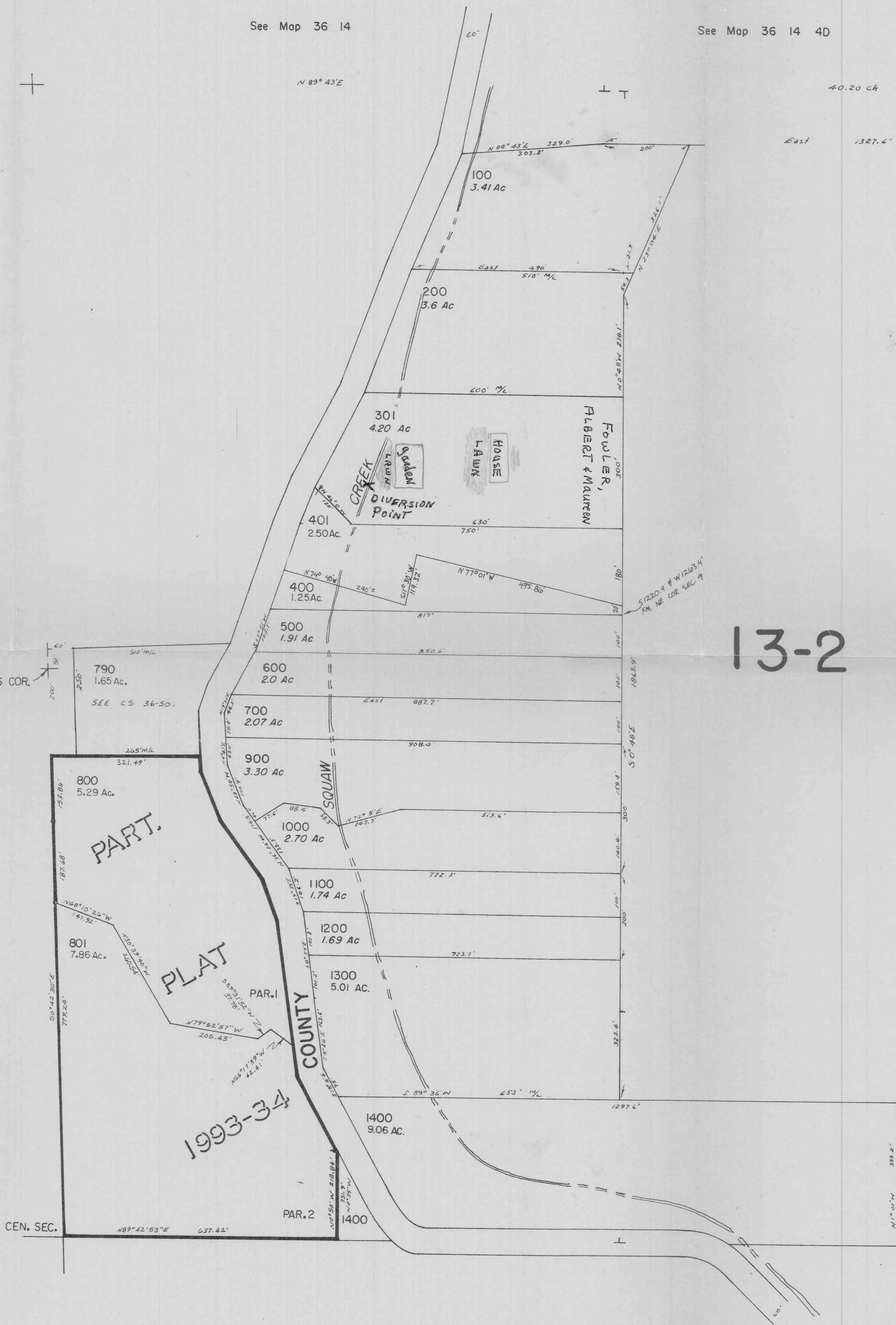
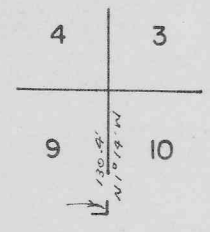
36 14 9 A

1" = 200'

Cancelled No's
300

See Map 36 14

See Map 36 14 4D



13-2

Application No. R-80179
Permit No. 52553

RECEIVED

APR 11 1995

See Map 36 14

RECEIVED

APR 11 1995

MATEI SA., OREGON

See Map 36 14

36 14 9 A