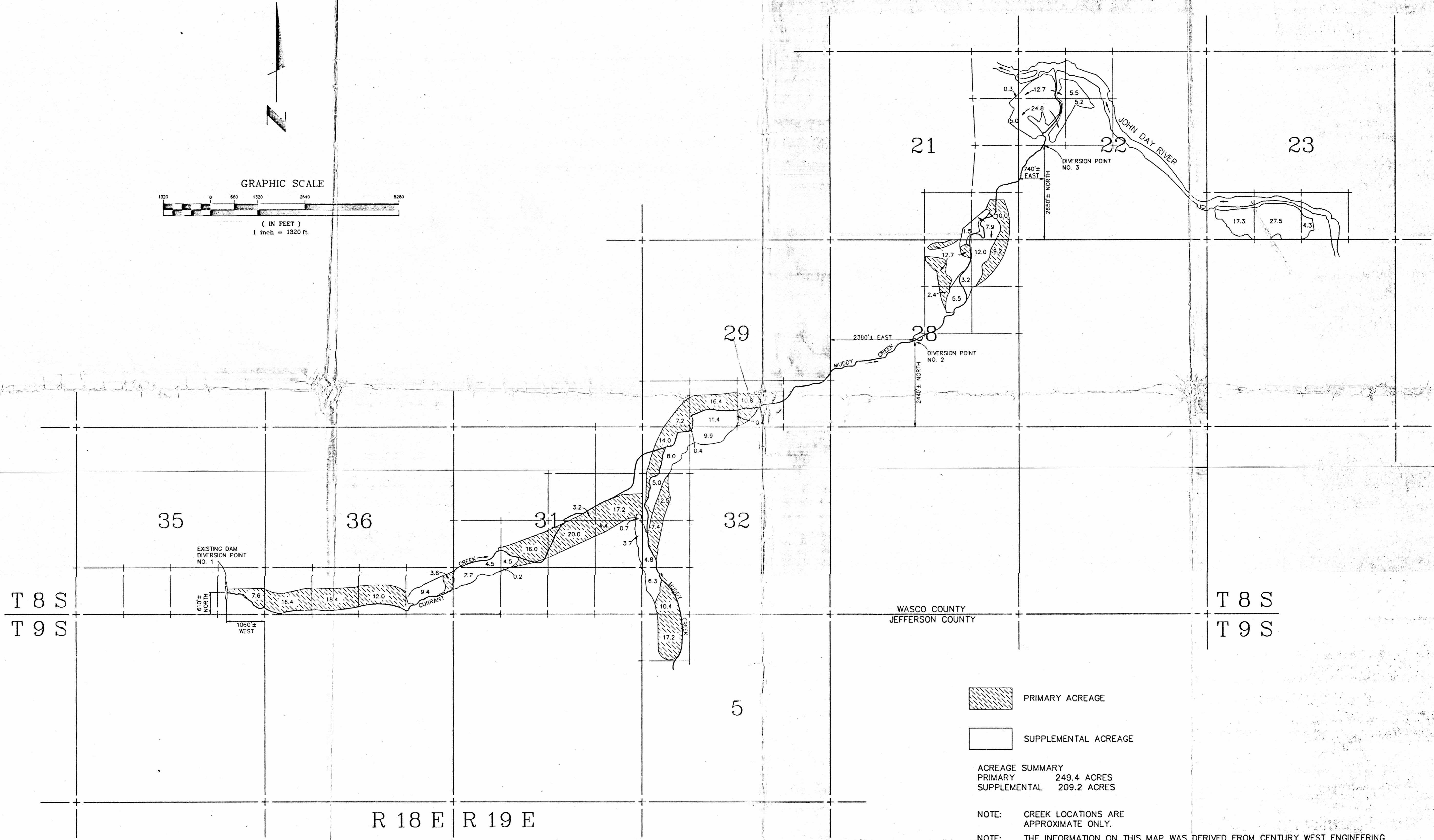
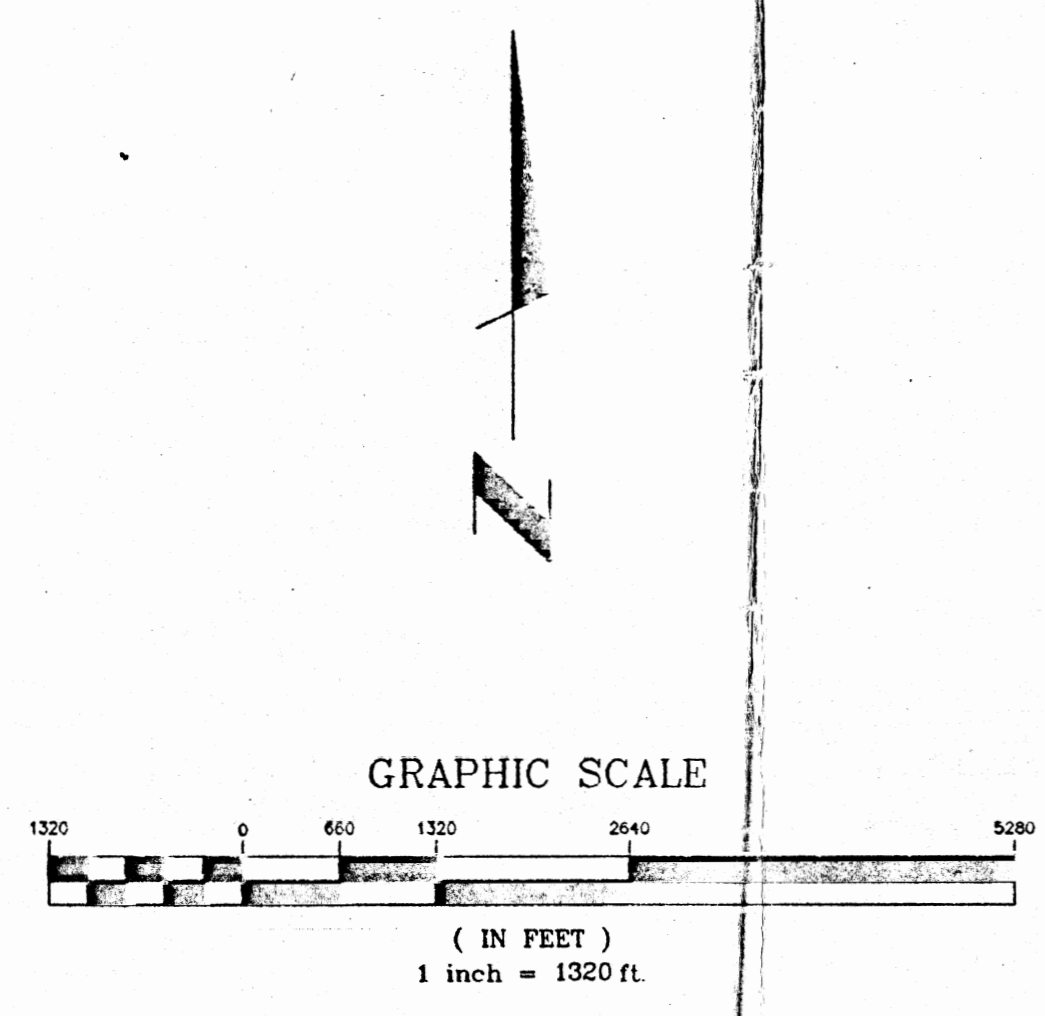

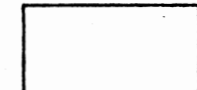


Application No. 72591
 Permit No. 52584

W&P PACIFIC
 155 N.E. REVERE
 BEND, OREGON 97701
 (503) 388-4255
 ENGINEERING • PLANNING • SURVEYING • LANDSCAPE ARCHITECTURE



WASCO COUNTY
 JEFFERSON COUNTY

 PRIMARY ACREAGE
 SUPPLEMENTAL ACREAGE

ACREAGE SUMMARY
 PRIMARY 249.4 ACRES
 SUPPLEMENTAL 209.2 ACRES

NOTE: CREEK LOCATIONS ARE APPROXIMATE ONLY.
 NOTE: THE INFORMATION ON THIS MAP WAS DERIVED FROM CENTURY WEST ENGINEERING CORPORATION'S ORIGINAL APPLICATION MAP FOR THE RAJNEESH NEO-SANNYAS INTERNATIONAL COMMUNE.

APPLICATION MAP
 FOR
 SURFACE WATER APPROPRIATION FROM
 CURRANT CREEK RESERVOIR
 FOR
 INLAND PROPERTIES INC.
 WASCO AND JEFFERSON COUNTY
 OREGON

Date: 6-23-92
 Design: _____
 Drawn: BWR
 Checked: _____

Revisions:



Sheet Number
 1 OF 1

Job No. 911-0101