

RECEIVED

FEB 23 1993

WATER RESOURCES DEPT.  
SALEM, OREGON

Application No. 73258

To  
Appropriate Surface Water  
for

CORY AND GEORGE KOOS

Sec. 32, T. 11 S., R. 2 W., W.M.  
Linn County, Oregon

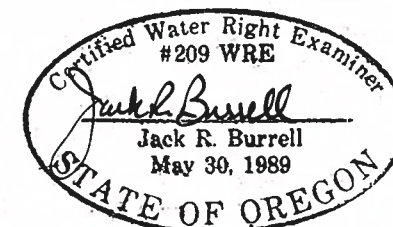
January 18, 1993

Applicant: George and Cory Koos  
33953 Langmack Road  
Lebanon, OR 97355

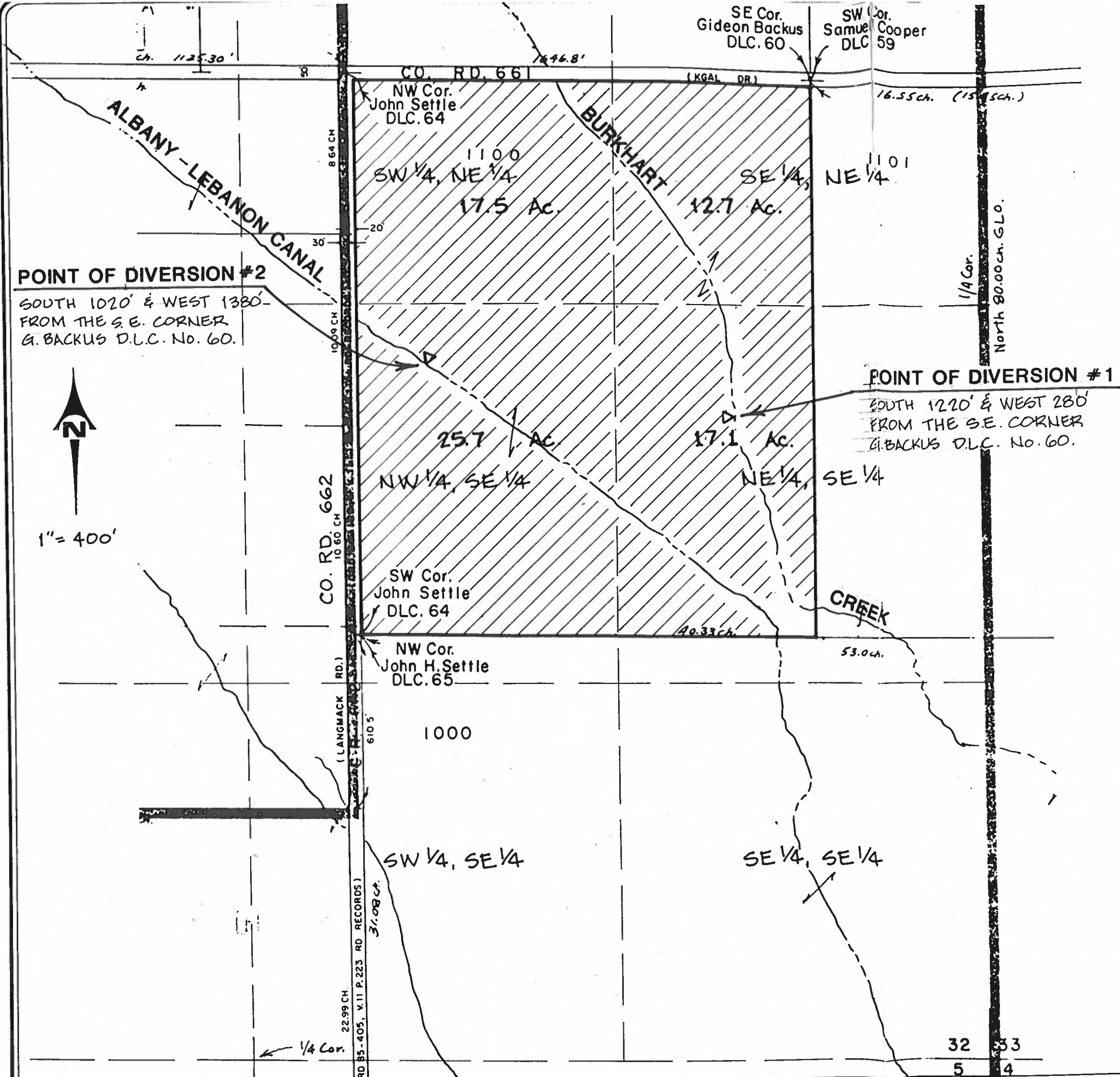
Tax Lot: 1100 (11-2W-32)  
Linn County, OR

Source: Burkhart Creek  
Santiam river via Albany-Lebanon  
Canal

Area:	SW 1/4, NE 1/4	-	17.5 AC.
	SE 1/4, NE 1/4	-	12.7 AC.
	NW 1/4, SE 1/4	-	25.7 AC.
	NE 1/4, SE 1/4	-	17.1 AC.
	TOTAL:		73.0 AC



EXPIRATION DATE: 12/31/93



**KD ENGINEERING, INC.**  
202 NW HICKORY STREET  
POST OFFICE BOX 725  
ALBANY, OREGON 97321

**KOOS WATER RIGHT**  
LOCATED IN  
SEC. 32, T. 11 S., R. 2 W., W.M., LINN COUNTY, OR.

DSGN. BY:	SCALE: 1" = 400'
DWG. BY: M.M.S.	DATE: JAN. 18, 1993
CKD. BY: J.R.B.	PROJECT NO: 92-152

SHEET NO.  
**1**