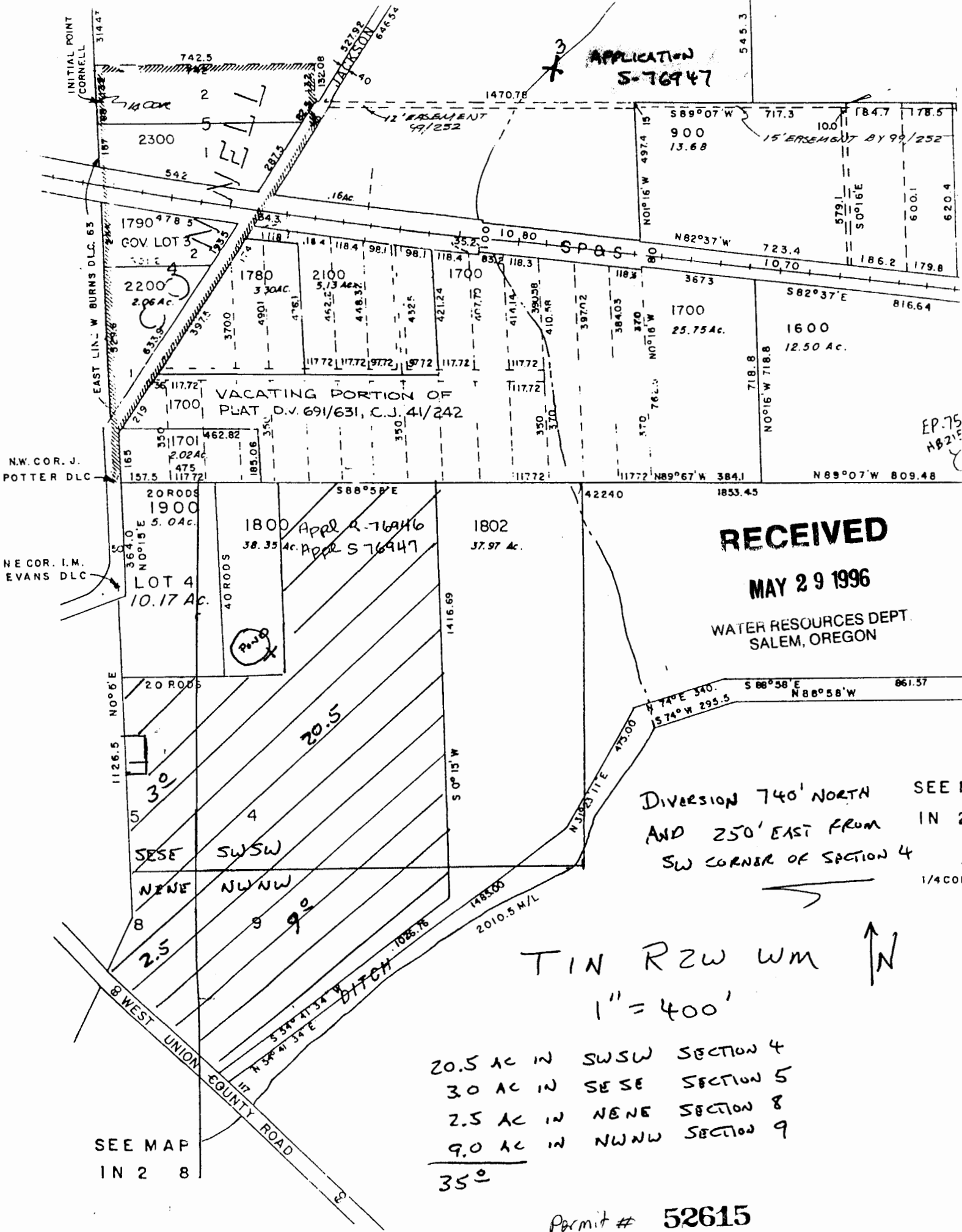


APPLICATION
S-76947



RECEIVED

MAY 29 1996

WATER RESOURCES DEPT.
SALEM, OREGON

DIVERSION 740' NORTH
AND 250' EAST FROM
SW CORNER OF SECTION 4

TIN RZW WM
1" = 400'

- 20.5 ac in SWSW SECTION 4
- 3.0 ac in SESE SECTION 5
- 2.5 ac in NENE SECTION 8
- 9.0 ac in NWNW SECTION 9

35°

Permit # 52615