

SE1/4 SEC.32 T.32S. R.6W. W.M.
DOUGLAS COUNTY

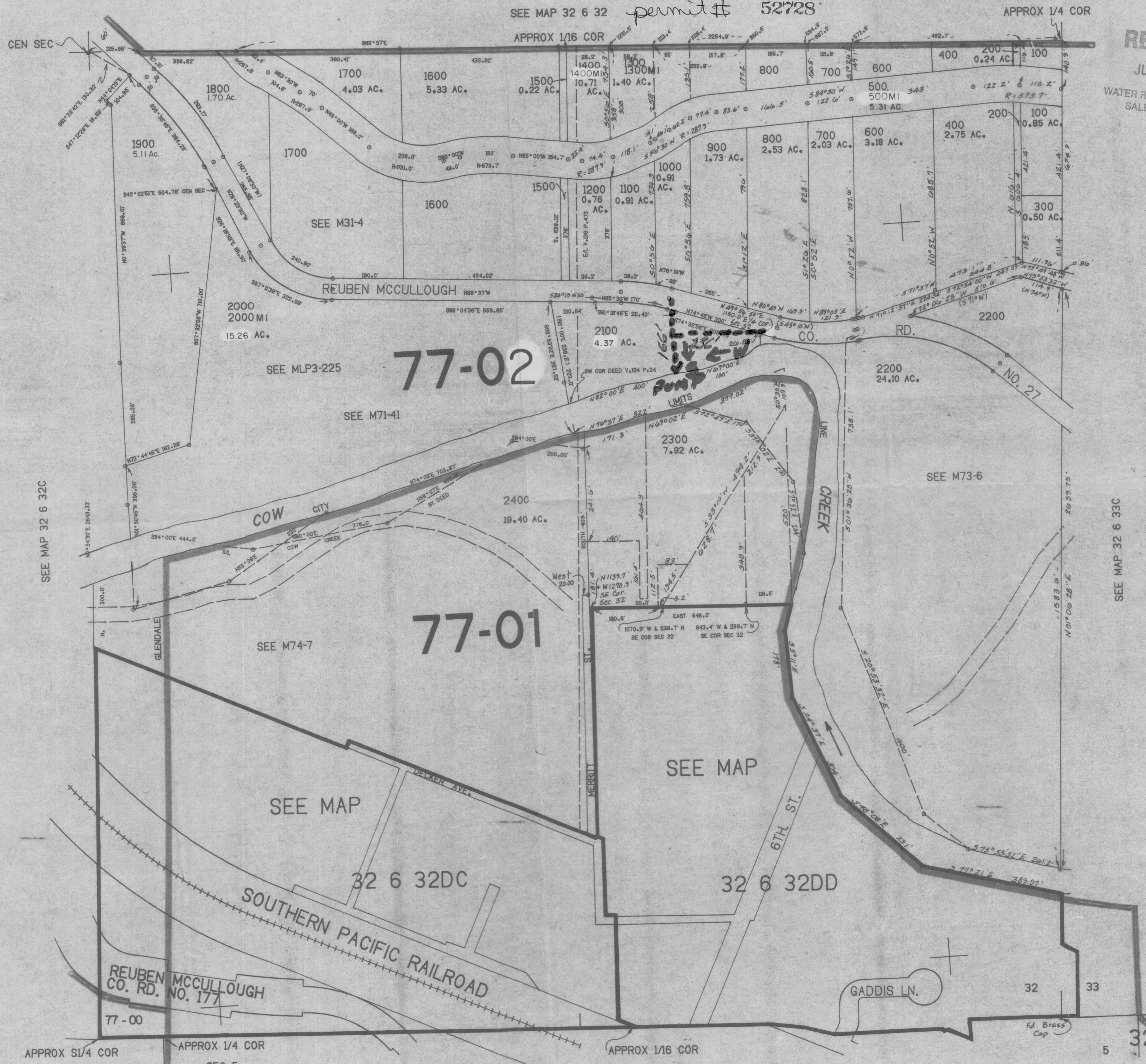
REVISED ON
5-11-93

32 6 32D
& INDEX
GLENDALE

THIS MAP WAS PREPARED FOR
ASSESSMENT PURPOSE ONLY.

1"=200'

File # 5-80652
permit # 52728



RECEIVED
JUL 10 1996
WATER RESOURCES DEPT.
SALEM, OREGON

77-02

77-01

SEE MAP 32 6 32C

SEE MAP 32 6 33C

APPROX 1/4 COR
SEC 32

APPROX 1/16 COR
SEE MAP 33 6 5AB

SEE MAP 33 6 5AA

32 6 32D
& INDEX
GLENDALE

1:214,000