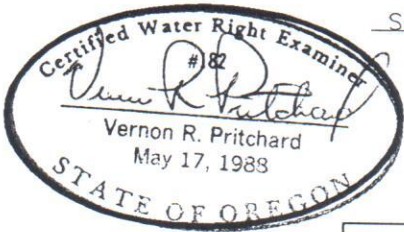


Application No. R-71804
 Permit No. 53161

53161

APPLICATION MAP FOR PERMIT TO CONSTRUCT A RESERVOIR

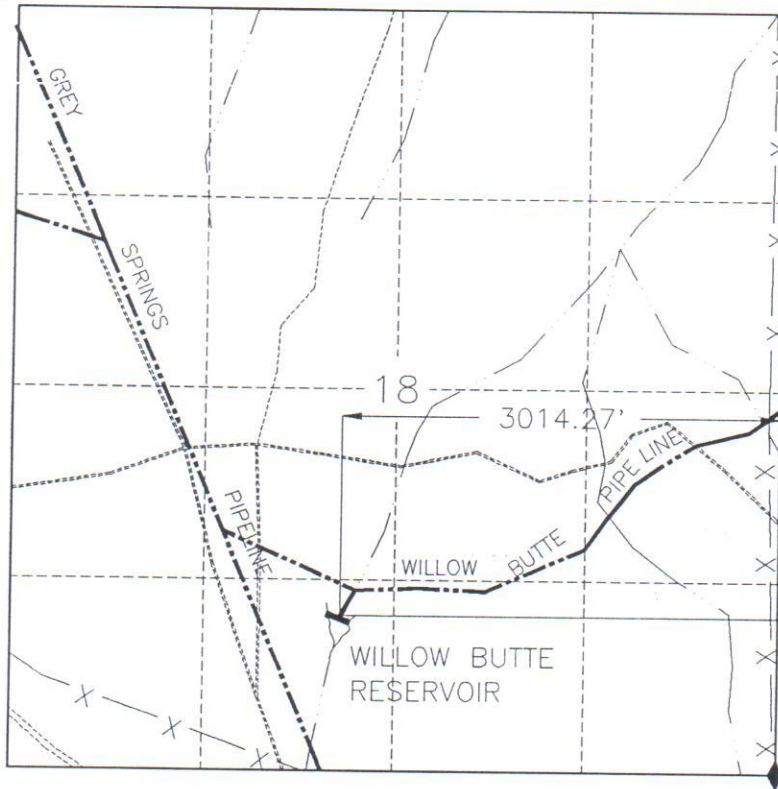
RECEIVED
 AUG 20 1991
 WATER RESOURCES DEPT.
 SALEM, OREGON



SE 1/4 SW 1/4 SEC 18 T 39 S R 38 E W.M.

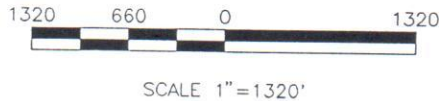
U.S.G.S. QUAD - POLE CANYON, OR. - 7 1/2'

RECEIVED
 DEC 13 1995
 WATER RESOURCES DEPT.
 SALEM, OREGON



- LEGEND
- ▭ TROUGH
 - ◆ FOUND CORNER
 - ▽ RESERVOIR
 - ~ SPRING

WILLOW BUTTE RESERVOIR (5781)



THIS MAP IS FOR THE PURPOSE OF LOCATING A WATER RIGHT AND IS NOT INTENDED TO PROVIDE LEGAL DIMENSIONS FOR LOCATION OF PROPERTY BOUNDARIES.



UNITED STATES DEPARTMENT OF THE INTERIOR BUREAU OF LAND MANAGEMENT DIVISION OF OPERATIONS VALE DISTRICT	
WILLOW BUTTE RESERVOIR	
DESIGNED	<i>Ronald W. Custer</i>
REVIEWED	<i>Vernon R. Pritchard</i>
APPROVED	<i>George D. House</i> CHIEF, BRANCH OF ENGINEERING
DRAWN: ARB	SCALE: AS SHOWN
DATE: JULY 30, 1991	SHEET 1 OF 1
DRAWING NO.	

ACAD RELEASE 10
 DWG FILE:WBRESH20

53161