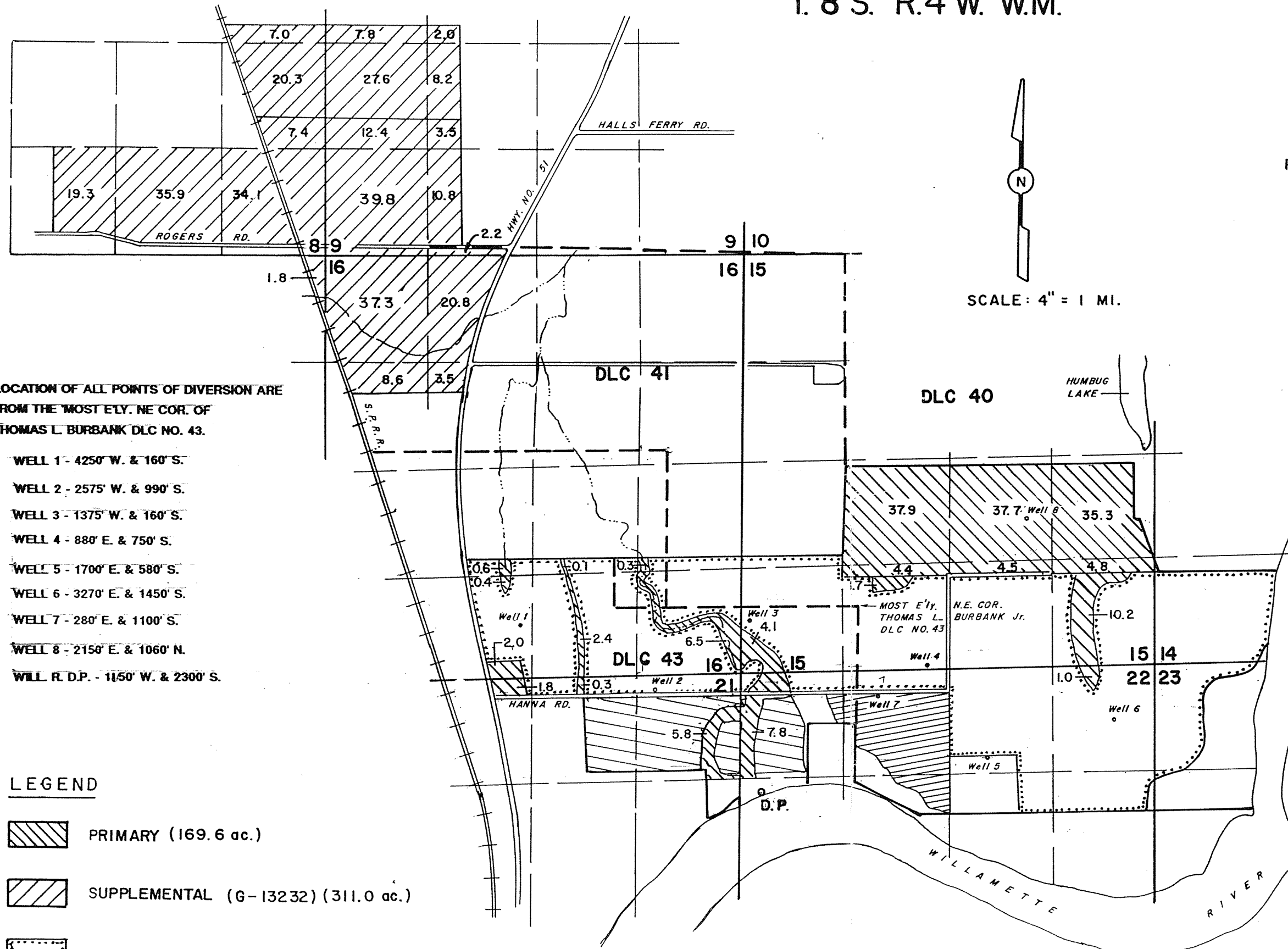



NOTE: THE SECTION, DLC, AND PROPERTY LINES ARE LAID OUT IN AGREEMENT WITH THE POLK COUNTY ASSESSORS MAPS BASED ON THE LEGAL DESCRIPTIONS OF THE PROPERTIES INCLUDED HEREIN AND REPRESENT THE RELATIVE LOCATIONS OF ALL POINTS OF DIVERSION, EXISTING WATER RIGHTS AND THE AREA OF PRIMARY IRRIGATION.

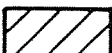


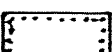
LOCATION OF ALL POINTS OF DIVERSION ARE  
FROM THE MOST ELY. NE COR. OF  
THOMAS L. BURBANK DLC NO. 43.


WELL 1 - 4250' W. & 160' S.  
WELL 2 - 2575' W. & 990' S.  
WELL 3 - 1375' W. & 160' S.  
WELL 4 - 880' E. & 750' S.  
WELL 5 - 1700' E. & 580' S.  
WELL 6 - 3270' E. & 1450' S.  
WELL 7 - 280' E. & 1100' S.  
WELL 8 - 2150' E. & 1060' N.  
WELL R.D.P. - 1150' W. & 2300' S.

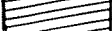
### LEGEND

 PRIMARY (169.6 ac.)

 SUPPLEMENTAL (G-13232) (311.0 ac.)

 GR 247 (407.7 ac.) (Wells 1-6)

 C-15133 (WILLAMETTE RIVER) (53.6 ac.)

 C-26530 (32.6 ac.) (Well no. 7)