

NW1/4 SEC. 19 T.26S. R.4W. W.M.  
DOUGLAS COUNTY

REVISED ON  
2-8-95

26 4 19B

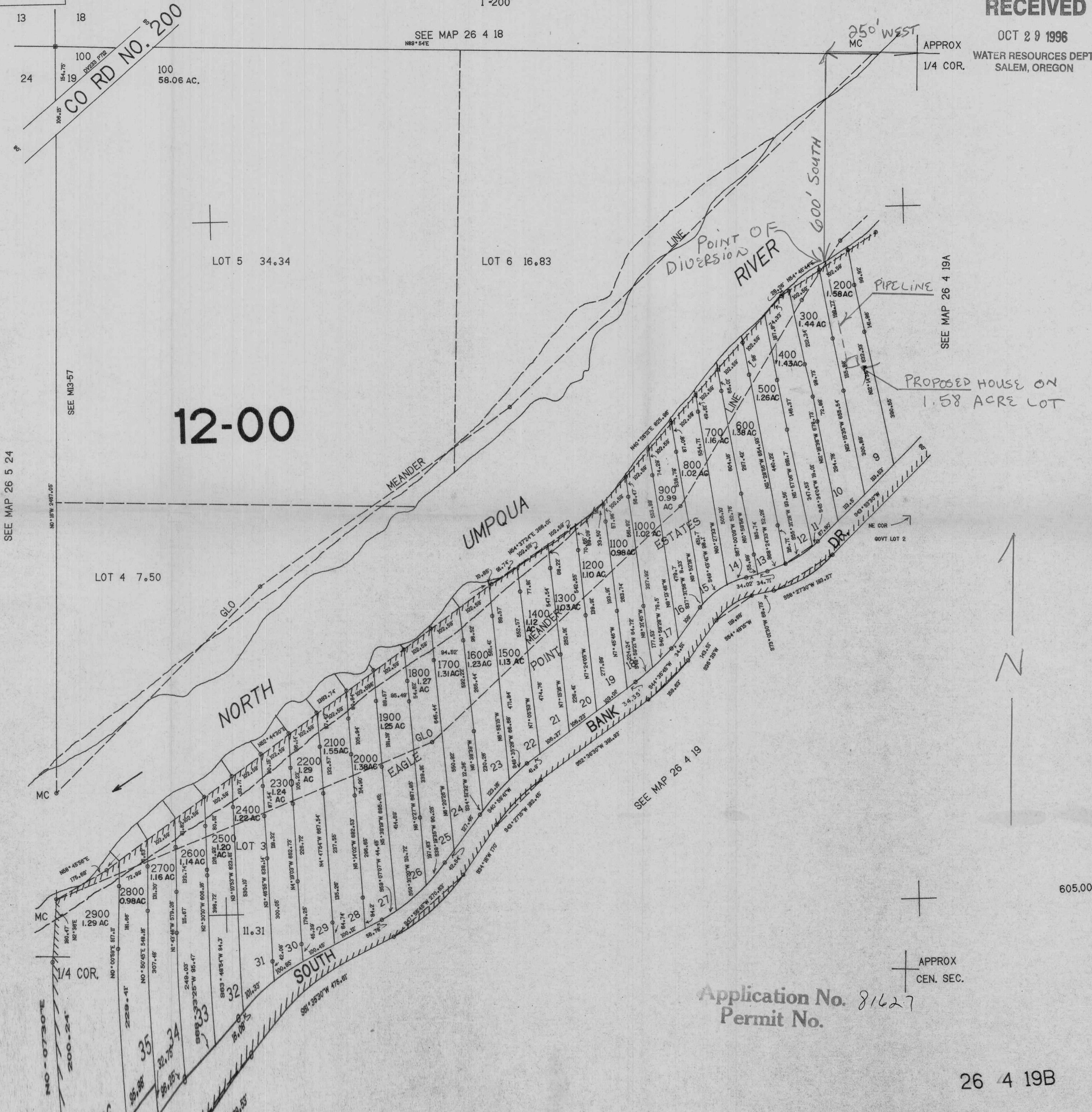
THIS MAP WAS PREPARED FOR  
ASSESSMENT PURPOSE ONLY.

1"=200'

SEE MAP 26 4 18

RECEIVED

OCT 29 1996  
WATER RESOURCES DEPT.  
SALEM, OREGON



SEE MAP 26 5 24

SEE M13-57

12-00

SEE MAP 26 4 19A

SEE MAP 26 4 19

605.000

APPROX  
CEN. SEC.

Application No. 81627  
Permit No.

26 4 19B