

CEL 2  
120-58

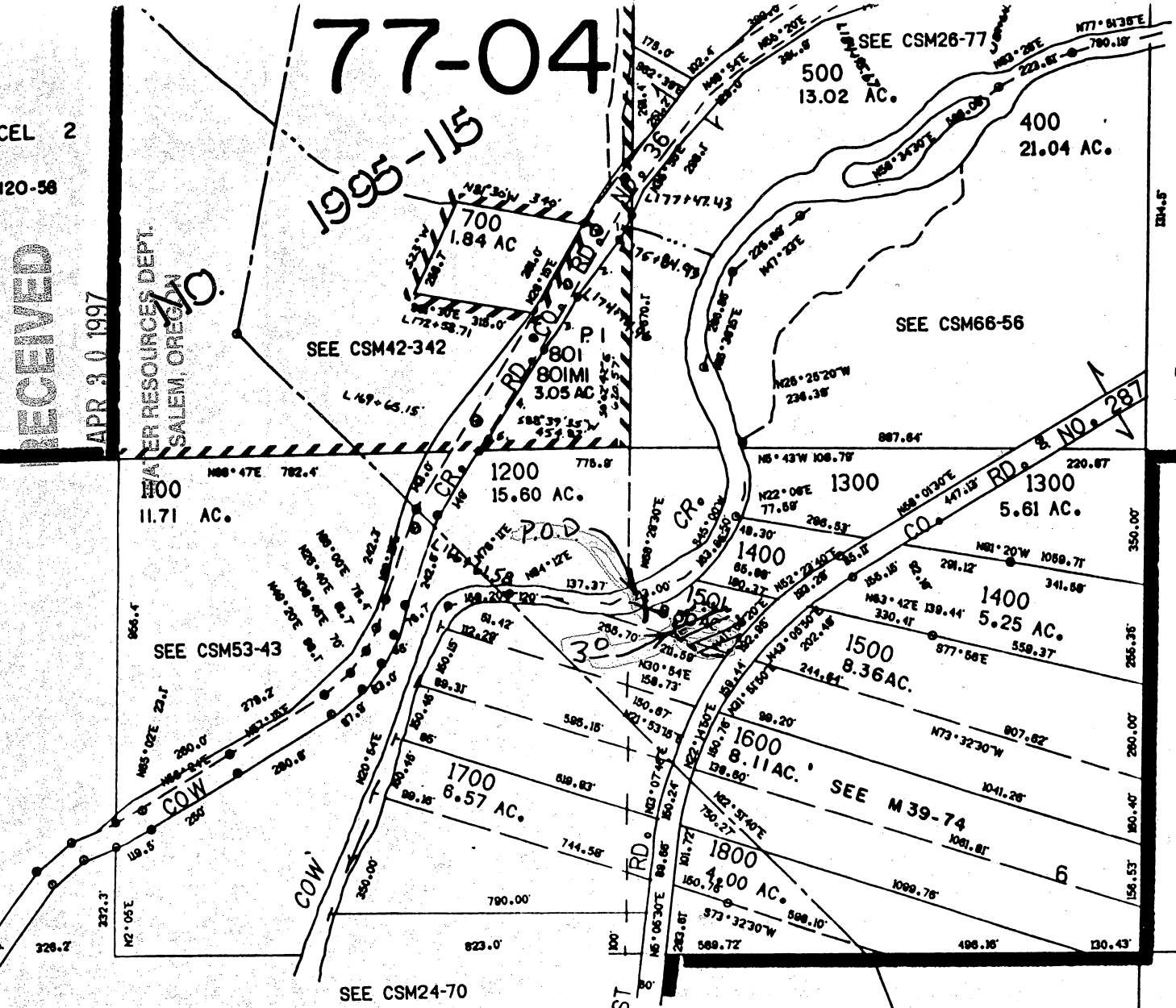
RECEIVED

APR 30 1997

WATER RESOURCES DEPT.  
SALEM, OREGON

# 77-04

## 1995-15



- 2. N37°35'37\" E 172.62'
- 3. LC=N33°50'15\" E 163.64' A=163.87'
- 4. N38°06'37\" E 273.71'
- 5. N46°44'41\" E 31.38'

RECEIVED

DEC 24 1996

WATER RESOURCES DEPT.  
SALEM, OREGON

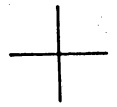
Application No. 83380  
 Permit No. 53303

T.32S., R.4W.  
SEC 6 SESE  
TL-1501

SEE MAP 32 4 7

SCALE: 1" = 400'

P.O.D. 1300' W. +  
900' N. from SE.  
Cor. S. 6.



429,000

32 4 6