

RECEIVED

JUN 29 1995

WATER RESOURCES DEPT.  
SALEM, OREGON

CONTROL LAYOUT TRACED CHECKED

GLENDEN POUNDS  
2498 N BAY DR  
NORTH BEND OR 97459-9546

RECEIVED MAP 1042

JUN - 7 1995

WATER RESOURCES DEPT.  
SALEM, OREGON

REDUCED COPY  
NOT TO SCALE

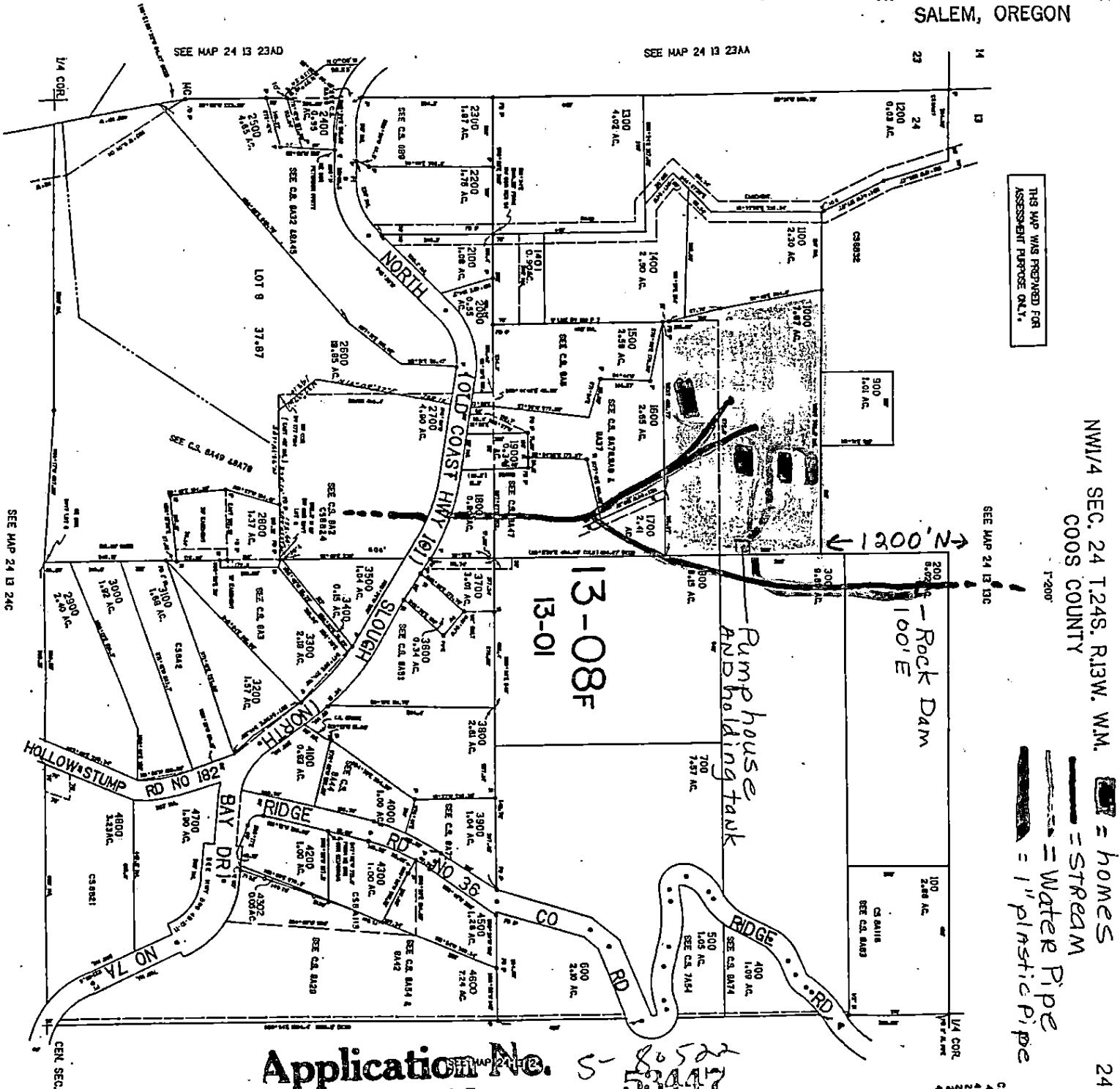
CHANGES UPDATED AS OF MAY 23 1994

COPIED

RECEIVED

JUN 19 1995

WATER RESOURCES DEPT.  
SALEM, OREGON



THIS MAP WAS PREPARED FOR  
ASSESSMENT PURPOSE ONLY.

NW1/4 SEC. 24 T.24S. R.13W. WM.  
COOS COUNTY

- = homes
- = STREAM
- = Water Pipe
- = 1" plastic pipe

Application No. 5-86522  
Permit No. 53447

CANCELLED IN  
4900  
4400  
2801  
3701  
2702  
4301

24 13 24

24 13 24

GLENDEN BOUNDS  
2498 N BAY DR  
NORTH BEND, OR 97459-9546

RECEIVED

JUN - 7 1995

MAR 2 0 22

WATER RESOURCES DEPT.  
SALEM, OREGON



RECEIVED

JUN 29 1995

WATER RESOURCES DEPT.  
SALEM, OREGON

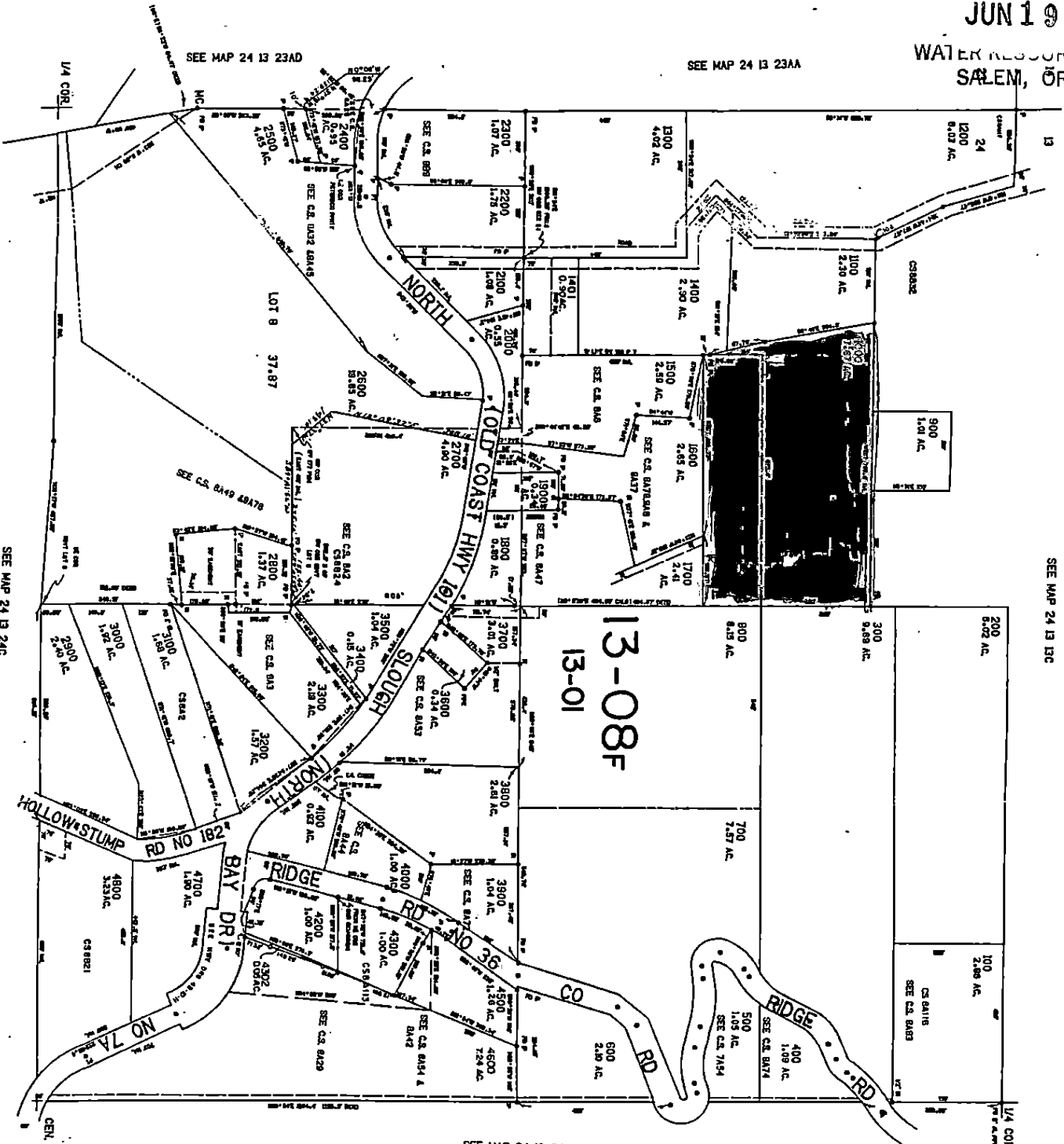
REDUCED COPY  
NOT TO SCALE

CHANGES UPDATED AS OF MAY 23 1994

RECEIVED

JUN 19 1995

WATER RESOURCES DEPT.  
SALEM, OREGON



THIS MAP WAS PREPARED FOR  
ASSESSMENT PURPOSE ONLY.

NW1/4 SEC. 24 T.24S. R.13W. W.M.  
COOS COUNTY

1"=200'

SEE MAP 24 13 13C

SEE MAP 24 13 24C

SEE MAP 24 13 24

Application No. S-80522  
Permit No. 53447

CANCELLED NOS  
4900  
4400  
3901  
3702  
4901

24 13 24B

24 13 24B

889.007