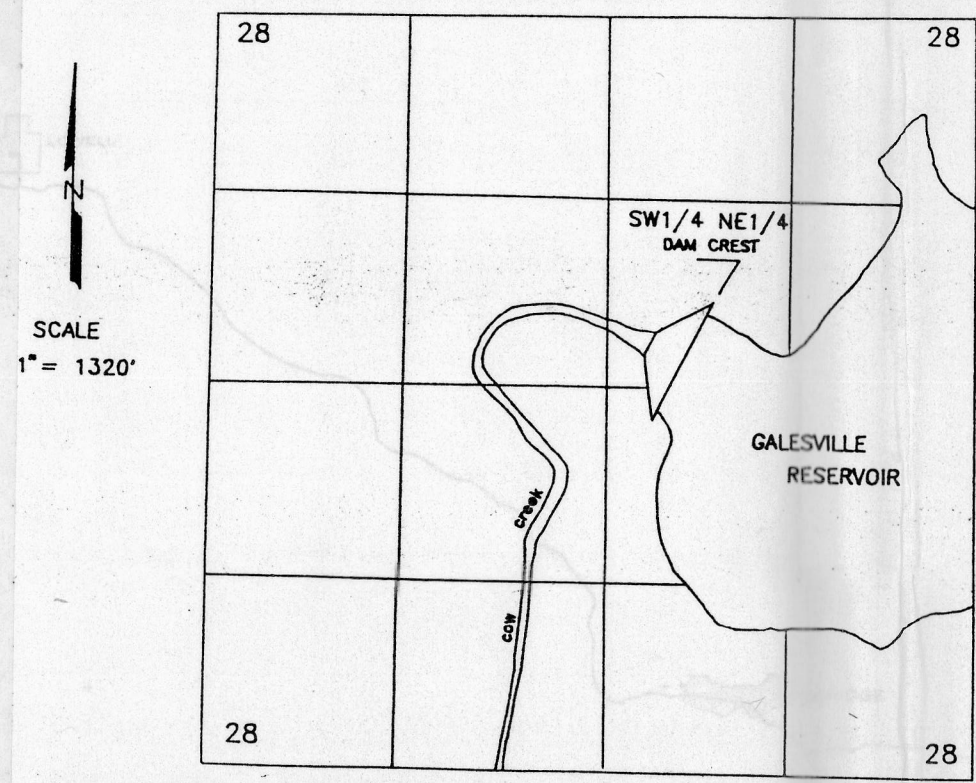


APPLICATION MAP
in the name of
DOUGLAS COUNTY

Township 31 South Range 4 West W.M.



GALESVILLE PROJECT
Douglas County, Oregon
Contract No: _____

Point of Diversion:
2,920'N.; 2,060'W
From SE Cor. Sec.28
Within Township 31 South
Range 4 West W.M.

Dam (Pod)=2920'N.;2060'w. From S.E. Cor. Sec. 28

LEGEND

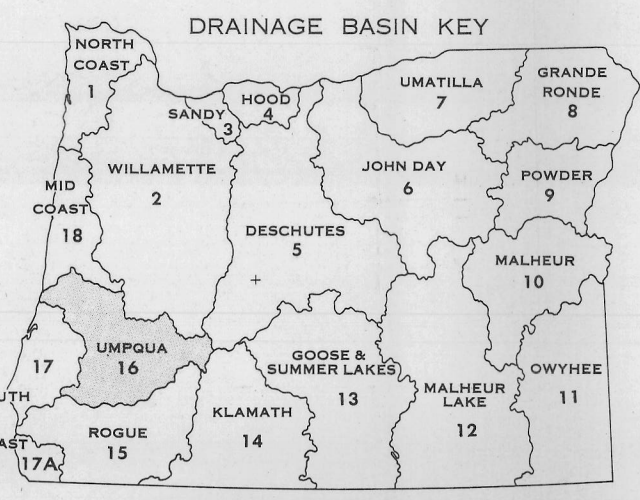
INCORPORATED CITY	ROSEBURG
OVER 10,000	MYRTLE CREEK
1,000 - 10,000	ELKTON
UNDER 1,000	UNINCORPORATED COMMUNITY
UNINCORPORATED COMMUNITY	UNINCORPORATED COMMUNITY
PLACE NAME	UNINCORPORATED COMMUNITY
FORMER COMMUNITY	UNINCORPORATED COMMUNITY
Includes place names of historical significance.	
ROADS: PAVED, GRAVEL, DIRT	
BEAT LANDING	
PARK, CAMPGROUND	
Includes State parks and waypoints, Forest Service camps, BLM camps, County and Municipal parks, Organizational camps, Reservoirs, and Hunter camps.	
RANGER STA., GUARD STA., LOOKOUT	
ELEVATION IN FEET: LAND, WATER, ROAD	
Station shown as Reservoirs are at maximum pool.	
PERENNIAL STREAM, LAKE	
INTERMITTENT STREAM, LAKE	
LOG POND	
STREAM MILES (MILES ABOVE MOUTH)	
HEAD OF TIDEWATER	
STREAM OR CANAL GAGE	
CANAL OR DITCH	
WATER PIPELINE, SIPHON, FLUME, TUNNEL	
DAM, DIKE, JETTY	
FALLS, RAPIDS	
MARSH, MEADOW	
SWAMP	
WATER TANK	
HYDRO POWER PLANT	
MINE, QUARRY, GRAVEL PIT	
CAVE	

FISH ENHANCEMENT FLOWS
END PROTECTION @ TIDEWATER
RIVER MILE 28.0

FISH ENHANCEMENT FLOWS
BEGIN @ RIVER MILE 111.7

GALESVILLE DAM
POINT OF DIVERSION
FROM STORAGE

Application No. 80545
Permit No. 53493



RECEIVED
JUL 17 1995
WATER RESOURCES BOARD
SALEM, OREGON

POLYCONIC PROJECTION
MILES
STATE WATER RESOURCES BOARD
SALEM, OREGON
1974

UMPQUA
DRAINAGE BASIN
OREGON