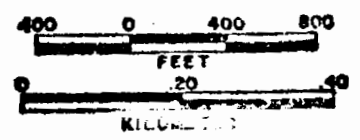


002/002

SCALE 1:9500



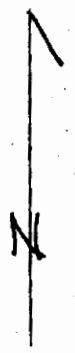
1" = 800'

5N 29 33

WATER RIGHTS/NWR

503 378 6203

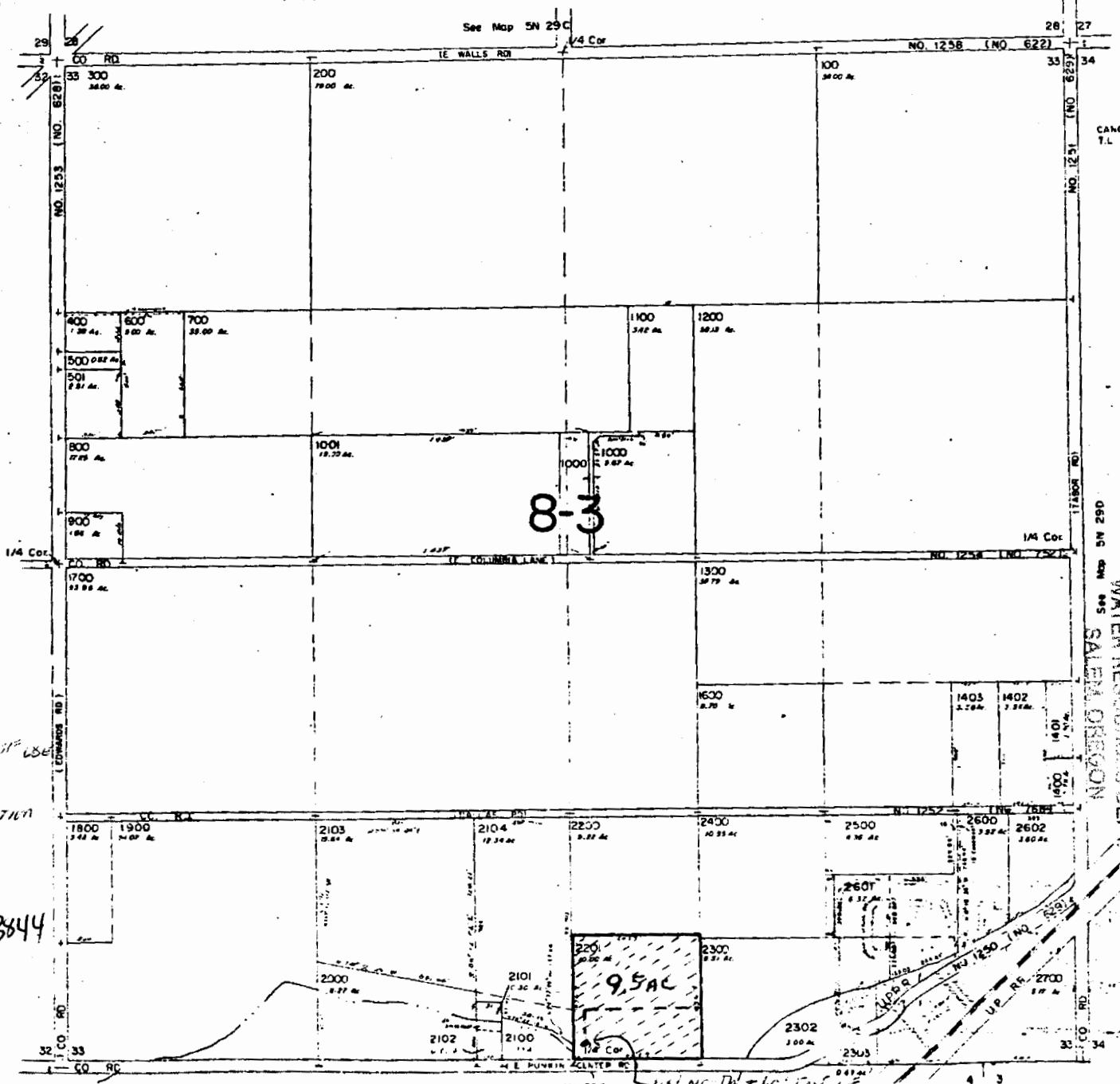
05/27/98



See Map 5N 29 32

Proposed place of use

- Proposed Pump Location
- 4" MAIN LINE



CANCELLED
T.L. 1500
2501
1002
1003
2501
2603

WATER RESOURCES DEPT
SALEM, OREGON

JUN - 2 1998

1ST

STANDARD

PARALLEL

NORTH

5N 29 33

See Map 4N 25B

45' N. 7th + 60' East of
SW Quarter Corner