

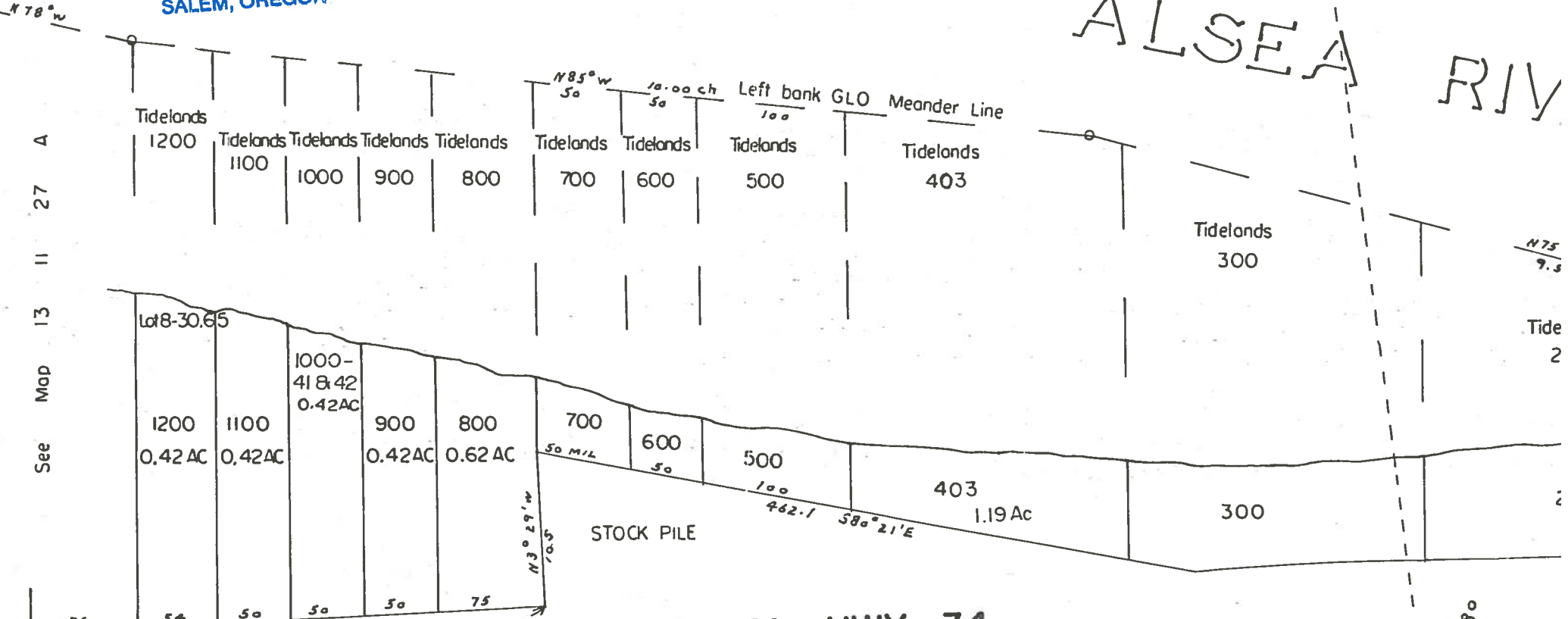
RECEIVED

JUN 26 1998

WATER RESOURCES DEPT.
SALEM, OREGON

SW1/4 NW1/4 SECTION 26 T13S R11W See Map 13 11 26

ALSEA RIV



ALSEA HWY 34



Application No. 84003
Permit No. 53592

SIUSLAW NATIONAL Forest Land

See Map 13 11

Bearing 198° 385ft

RECEIVED

NOV 12 1998

WATER RESOURCES DEPT.
SALEM, OREGON

44° 24.544'
123° 59.811' /inversion