

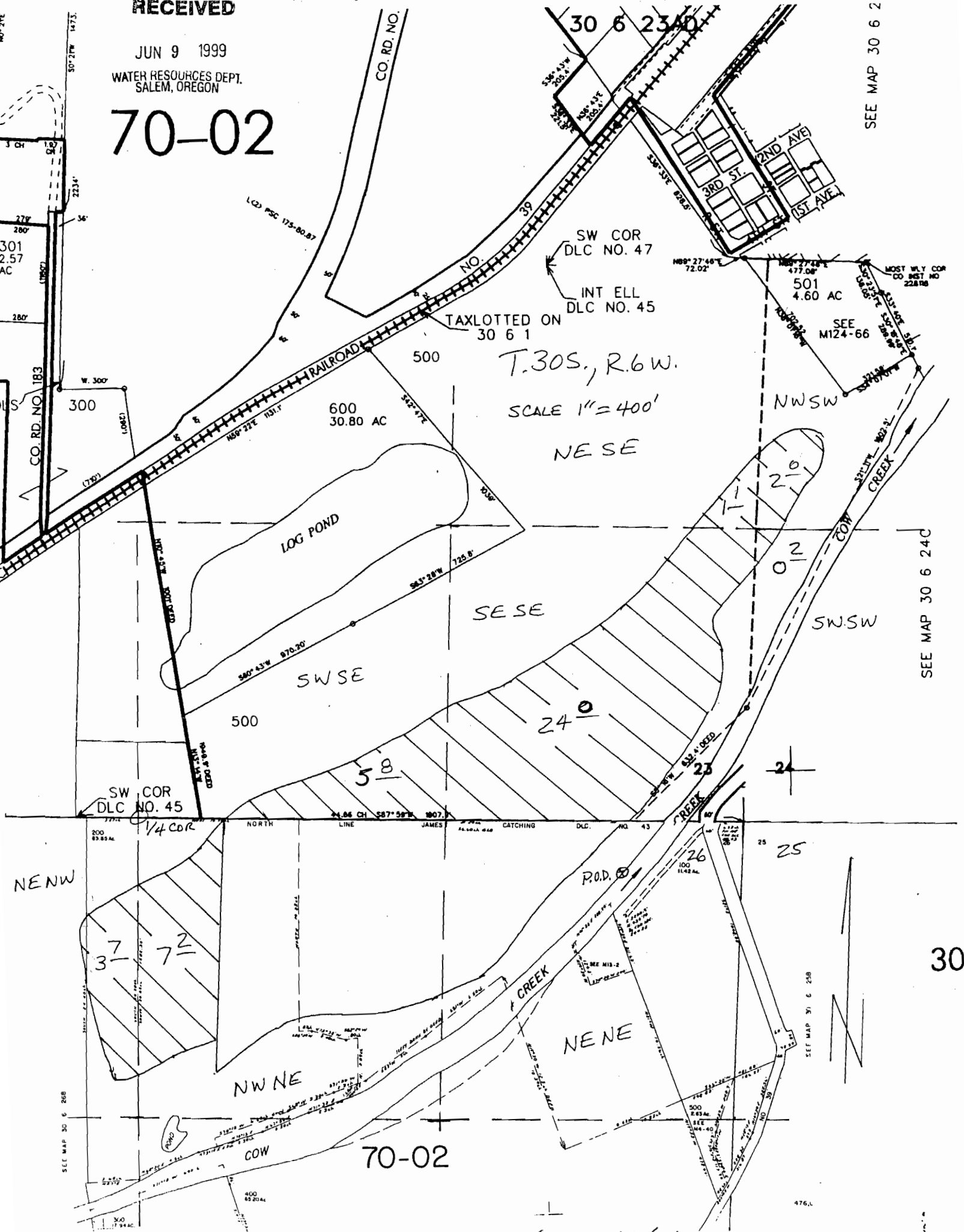
RECEIVED

JUN 9 1999

WATER RESOURCES DEPT.
SALEM, OREGON

70-02

SEE MAP 30 6 2



T.30S., R.6W.
SCALE 1" = 400'
NESE

P.O.D. LOCATED: 230'S. & 550'W.
FROM NE COR. SEC 26
T. 30.S., R. 6.W.

Application No 84217
Permit No. 53727

SEE MAP 30 6 24C

30

SEE MAP 30 6 25B

SEE MAP 30 6 26B

476.L