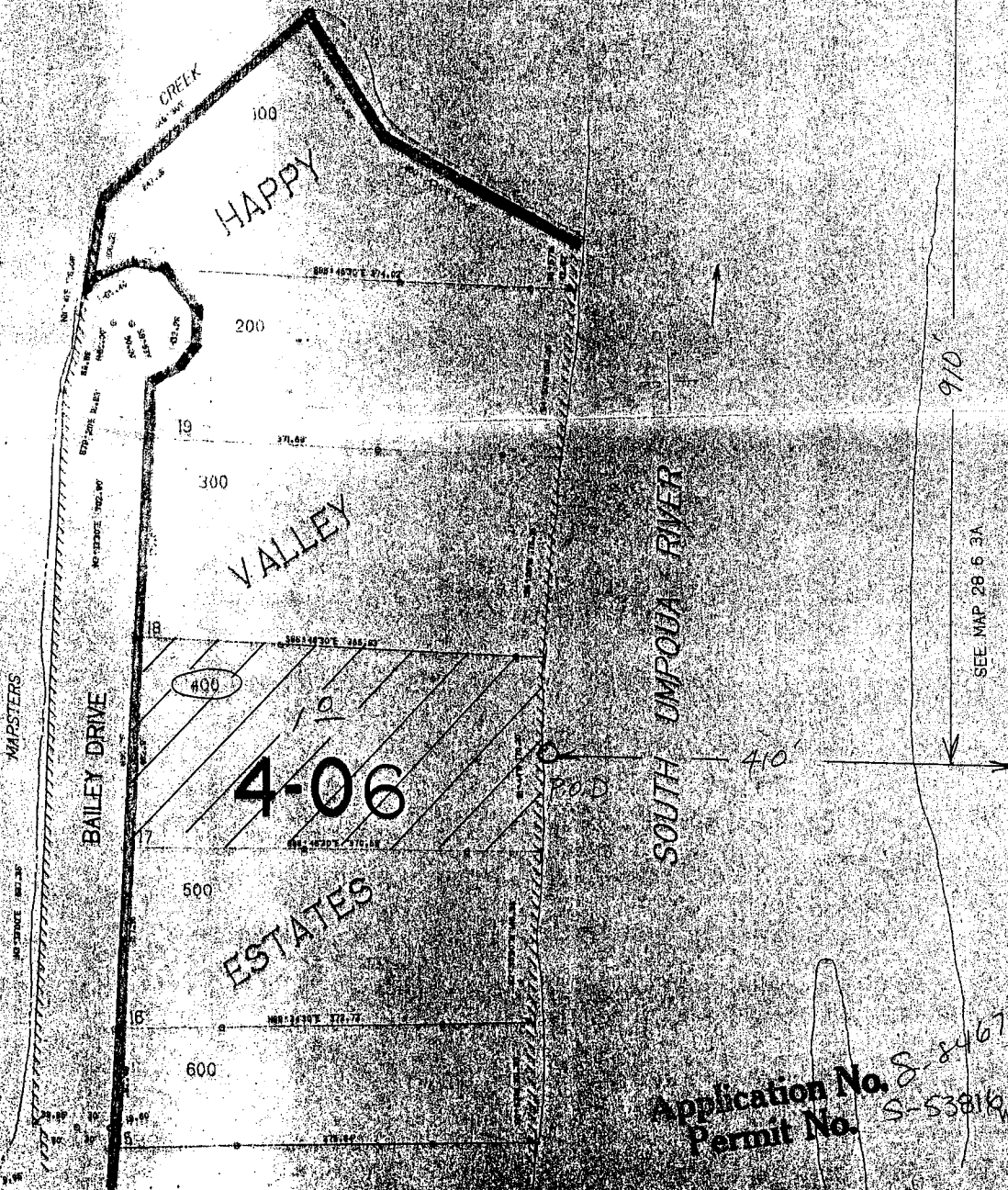


1" = 100'

SEE MAP 27 6 34

SEE MAP 28 6 3

APPROX.  
N1/4 COR.



910'

SEE MAP 28 6 3A

Application No. S-53816  
Permit No. S-53816

RECEIVED  
MAR 01 2001  
WATER RESOURCES  
SALEM, OREGON

APPROX.  
1/16 COR.

SEE MAP 29 6 3B