

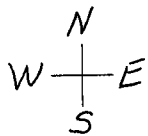
THIS MAP WAS PREPARED FOR ASSESSMENT PURPOSE ONLY

app# S-84683
Permit # S-53846

N 1/4 CORNER

1/4 COR. M9-36

P.O.D. LOCATED: 230' S & 700' E.
FROM N 1/4 COR SEC. 22



SEE MAP 27 6 22B



UMPQUA

RIVER

CO RD

MELROSE

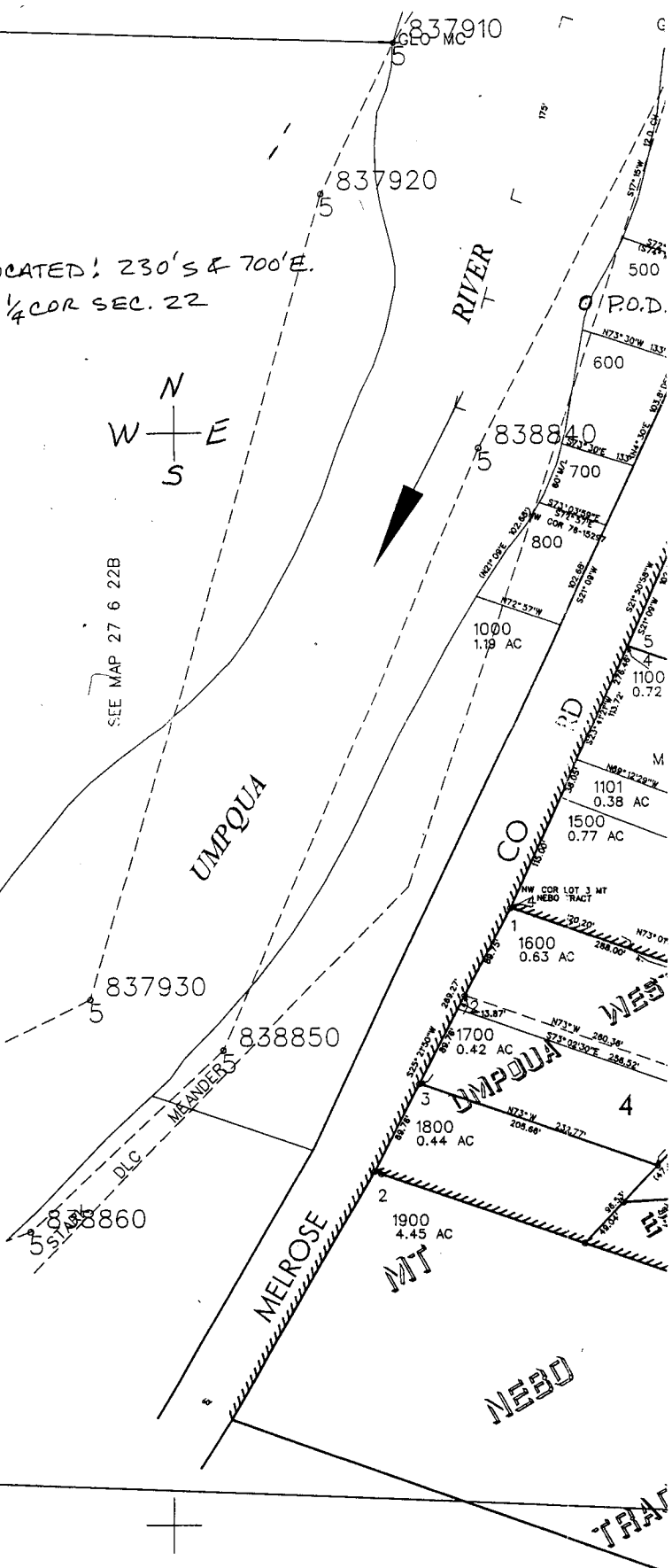
UMPQUA WEST

NEBO

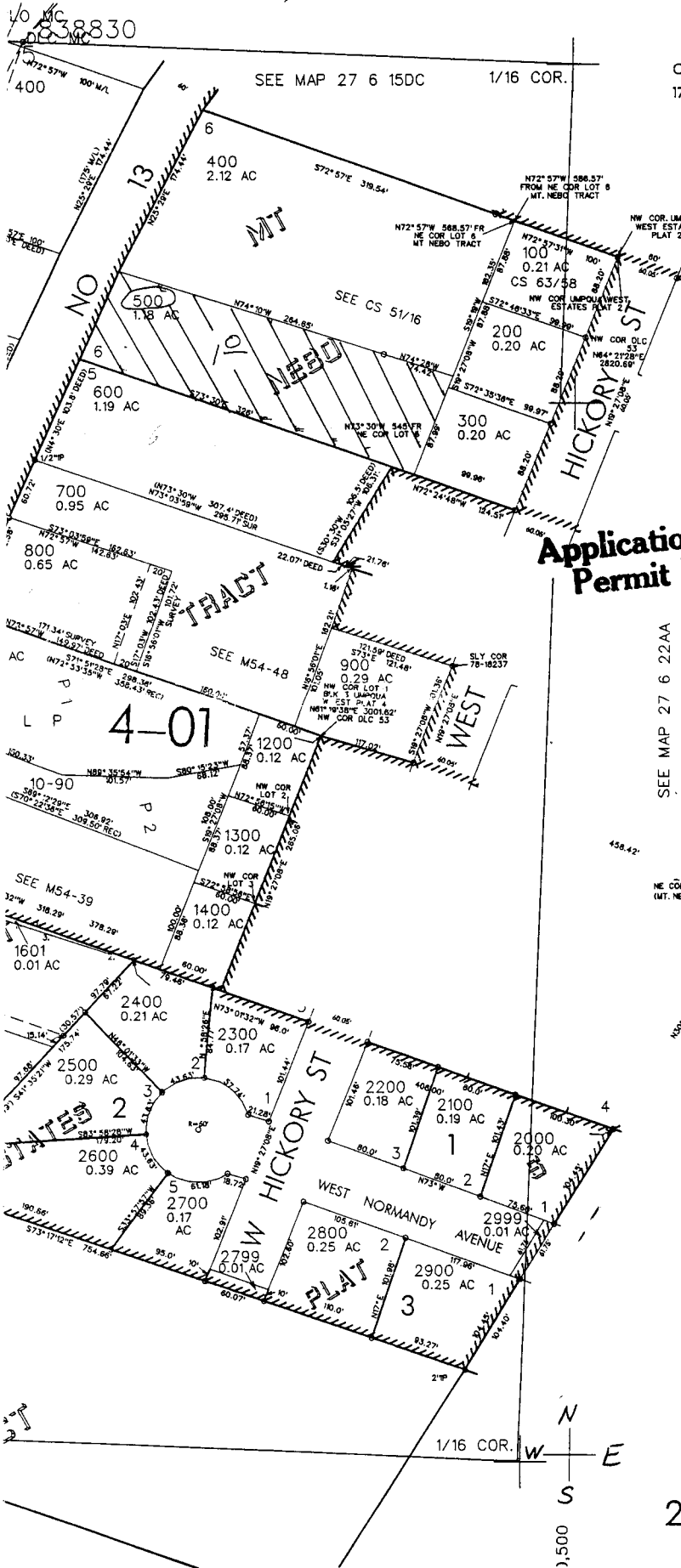
TRAIL

SEE MAP 27 6 22

1/16 COR.



REVISED ON 4-7-98



CANCELLED NO'S 1701

RECEIVED FEB 26 2001

WATER RESOURCES DEPT SALEM, OREGON

RECEIVED MAR 07 2001

WATER RESOURCES DEPT SALEM, OREGON

Application No. 84683
Permit No.

SEE MAP 27 6 22AA

30002
65176
163720
-2151

NE COR LOT 4 (MT. NEBO TRACT)

PARCEL 1601

- 1. S73°07'18"E 143.67'
- 2. N18°01'54"E 2.11'
- 3. S74°18'38"E 124.64'
- 4. S59°53'14"E 19.58'

576,000

27 6 22AB ROSEBURG