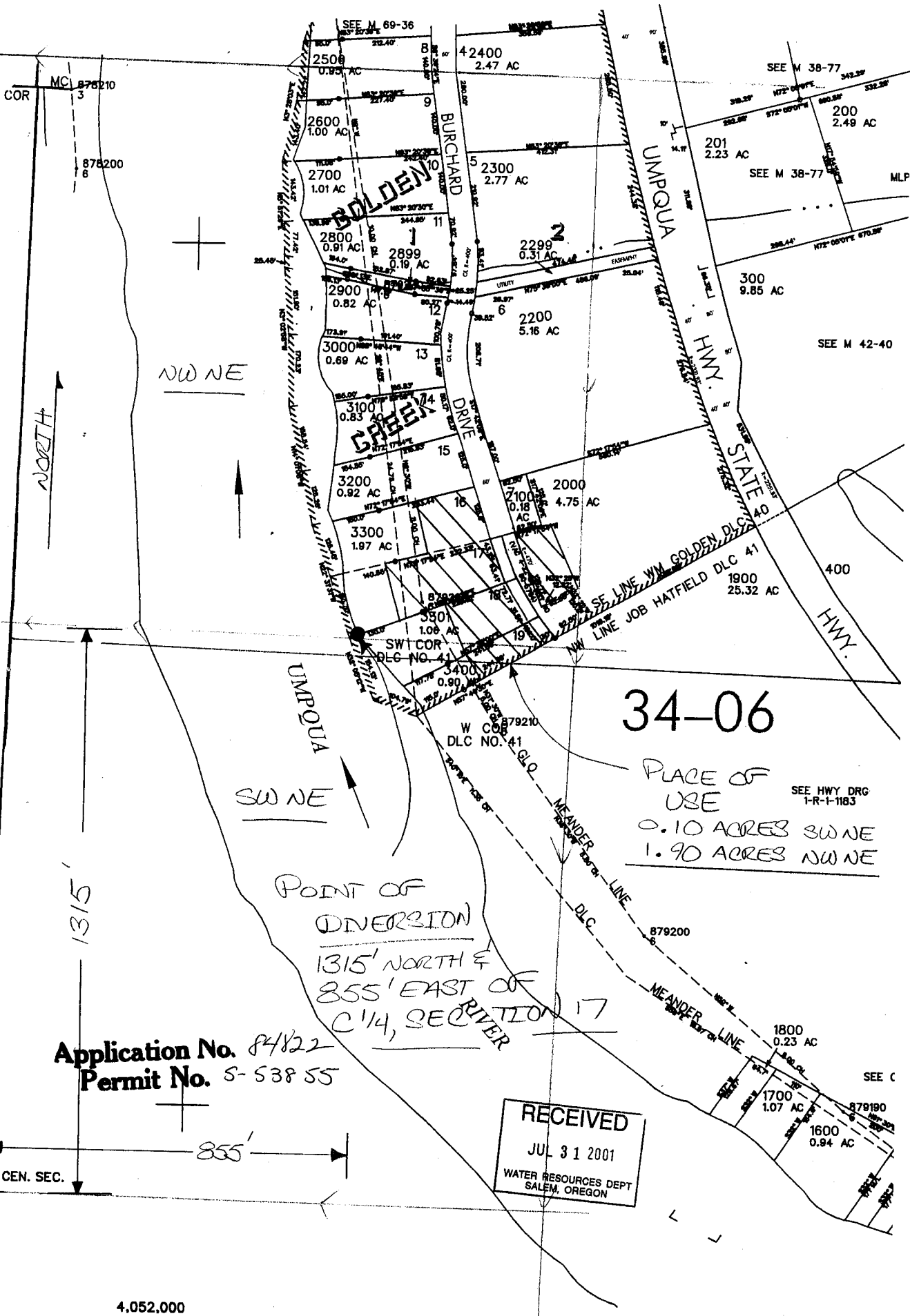


NE1/4 SEC. 17 T.22S. R. 9W W.M.
DOUGLAS COUNTY

1" = 200'

THIS MAP WAS PREPARED FOR
ASSESSMENT PURPOSE ONLY



Application No. 84822
Permit No. S-53855

RECEIVED
JUL 31 2001
WATER RESOURCES DEPT
SALEM, OREGON