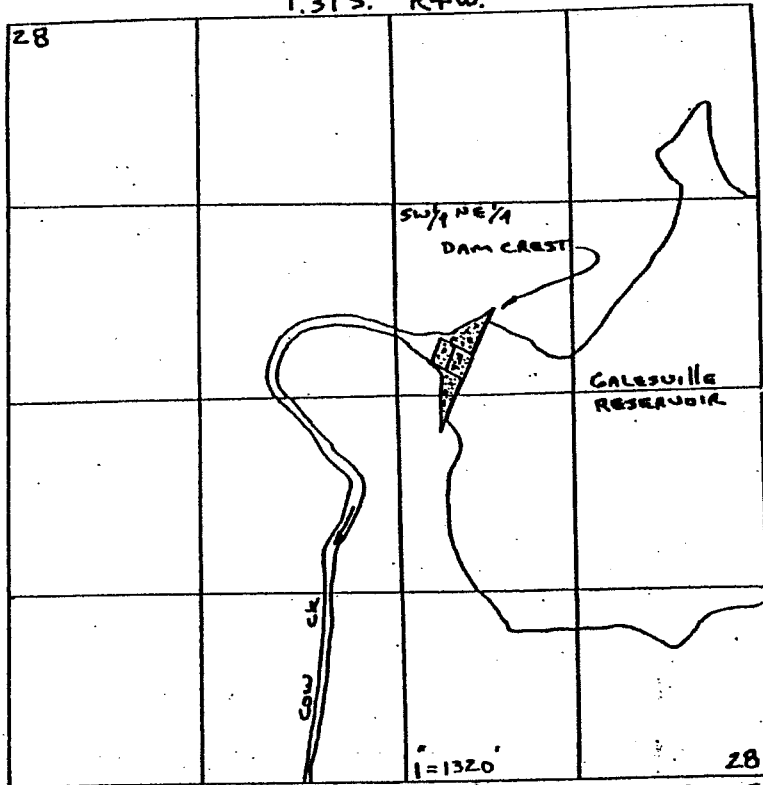


T.31 S. R.4 W.

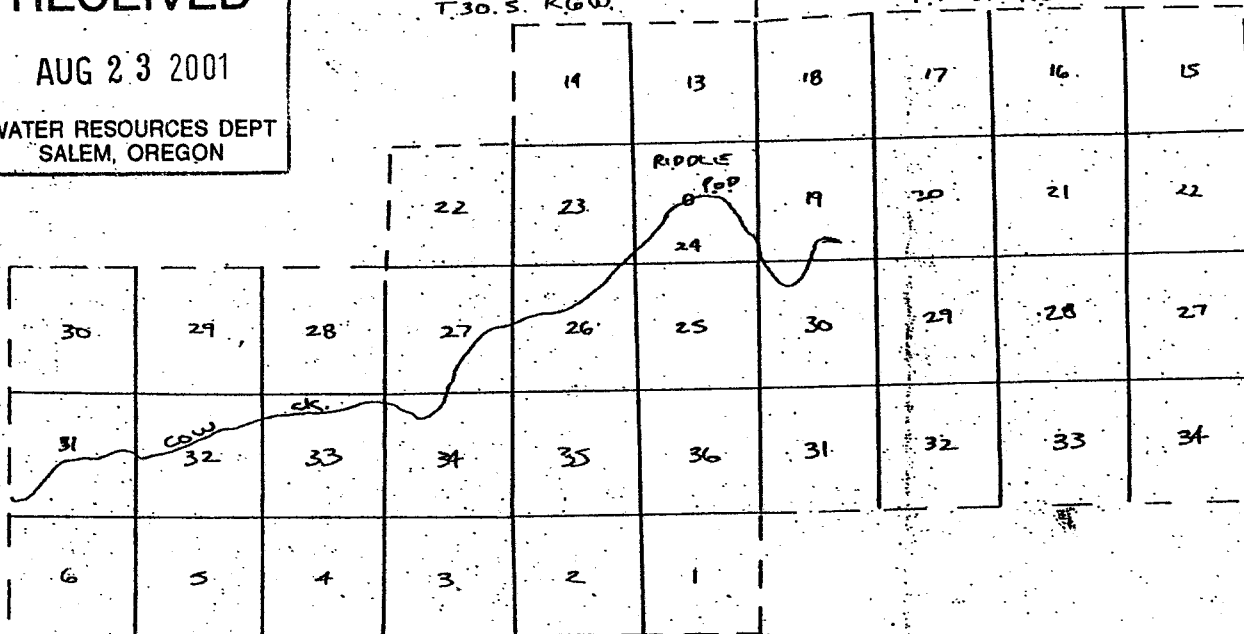


DAM (POD) = 2920' N. ; 2060' W. FROM SE COR. S. 28

RECEIVED
 AUG 23 2001
 WATER RESOURCES DEPT
 SALEM, OREGON

T.30 S. R.6 W.

T.30 S. R.5 W.



----- = DISTRICT BOUNDARY = PLACE OF USE
 POD = 2140' S. & 2240' E. FROM NW. COR. S. 24, T.30 S., R.6 W

Application No. 84852
Permit No. 53867