

THIS MAP WAS PREPARED FOR ASSESSMENT PURPOSE ONLY.

WORKING COPY

SECTION 25 T23S, R.13 W. W.M.  
COOS COUNTY

1" = 400'

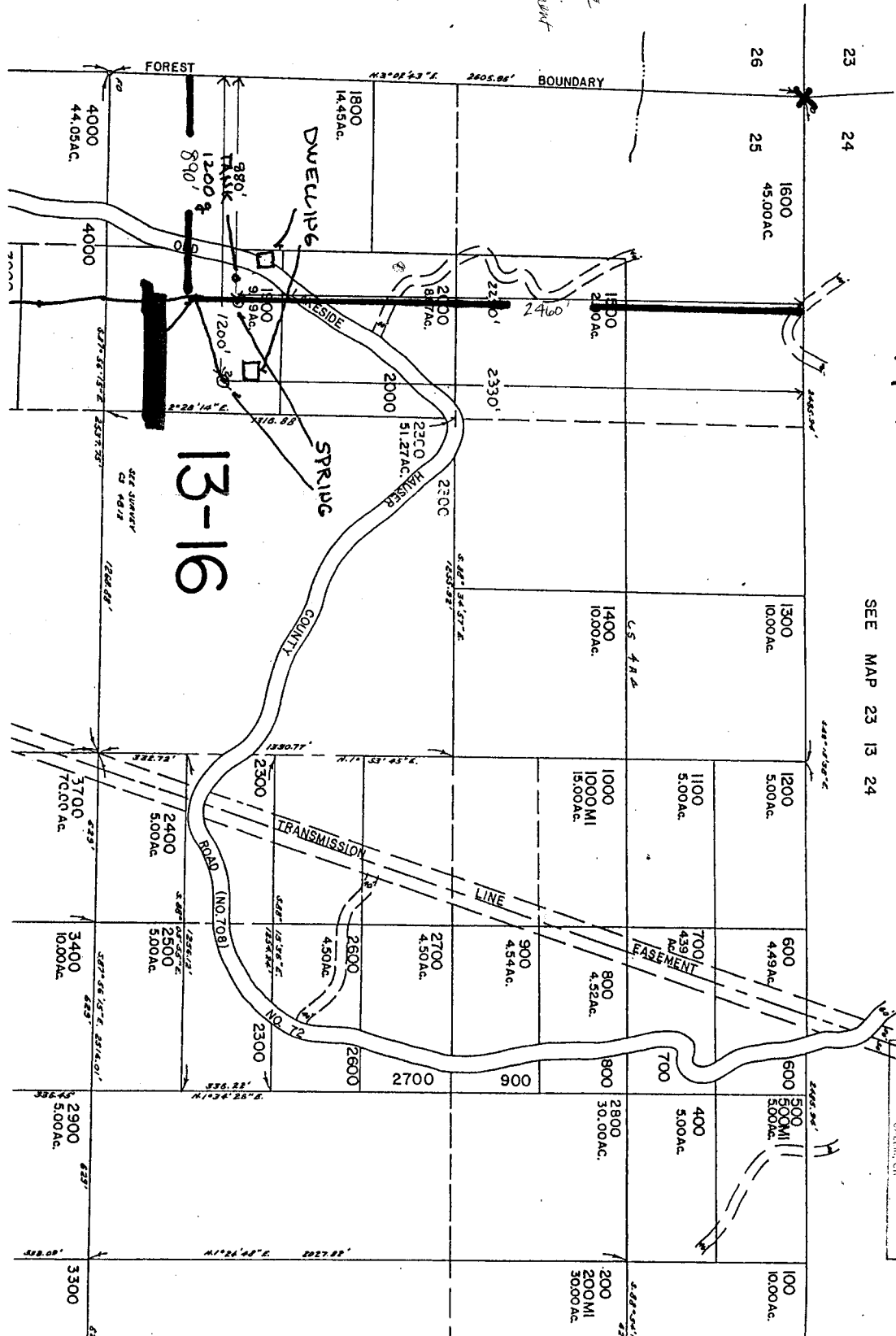
RECEIVED  
JAN 29 2002  
WATER RESOURCES DEPT  
SALEM, OR

RECEIVED  
JUN 19 2002  
WATER RESOURCES DEPT.  
SALEM, OREGON

Area in red indicate P.O.D. measurement

Application No. 5-85016  
Permit No. 5-53879  
This appears correct  
6/16/2002

SEE MAP 23 13 26



SEE MAP 23 13 24