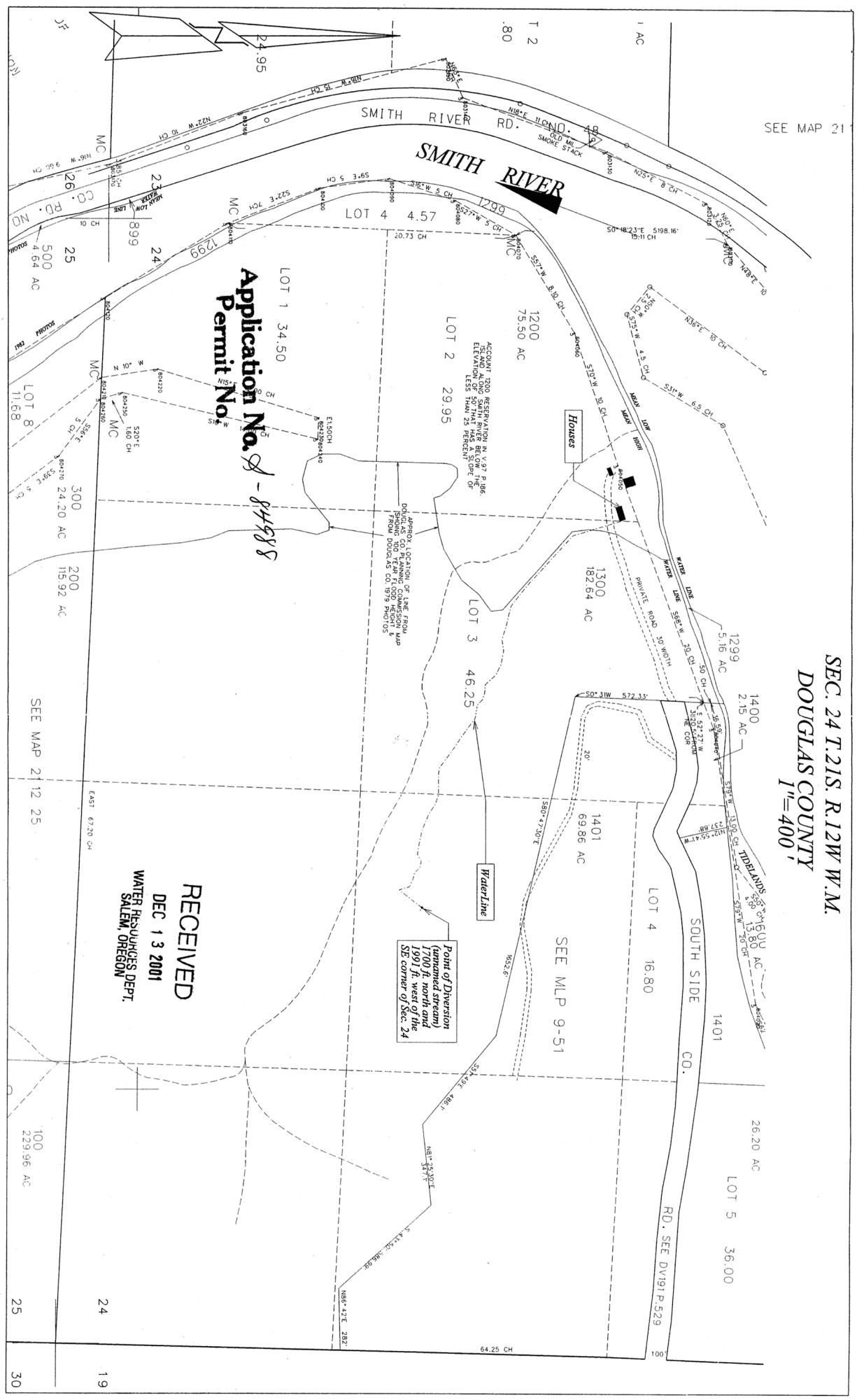


SEE MAP 21

SEC. 24 T.21S. R.12W W.M.  
DOUGLAS COUNTY  
1"=400'



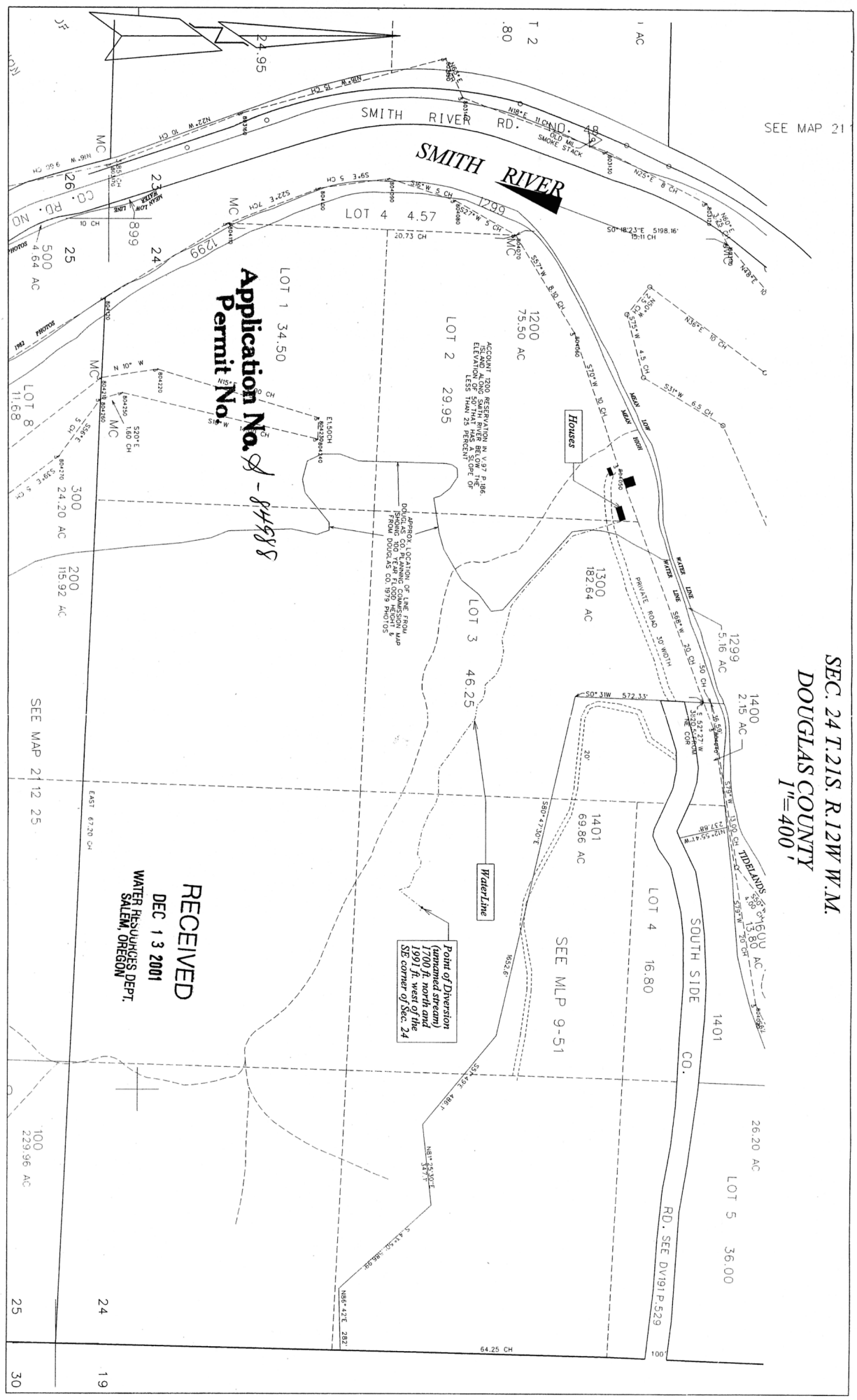
Application No. 2-84988  
Permit No. 15

Point of Diversion  
(unnamed stream)  
100 ft. north and  
100 ft. west of the  
SE corner of Sec. 24

RECEIVED  
DEC 13 2001  
WATER RESOURCES DEPT.  
SALEM, OREGON

SEE MAP 21 12 25

SEE MLP 9-51



Application No. 2-84988  
Permit No. 15

Point of Diversion  
(unnamed stream)  
100 ft. north and  
100 ft. west of the  
SE corner of Sec. 24

RECEIVED  
DEC 13 2001  
WATER RESOURCES DEPT.  
SALEM, OREGON

SEE MAP 21 12 25

SEE MLP 9-51