

FOR ASSESSMENT  
AND TAXATION  
ONLY

Application No. 84651  
Permit No. S-538910

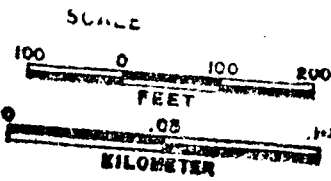
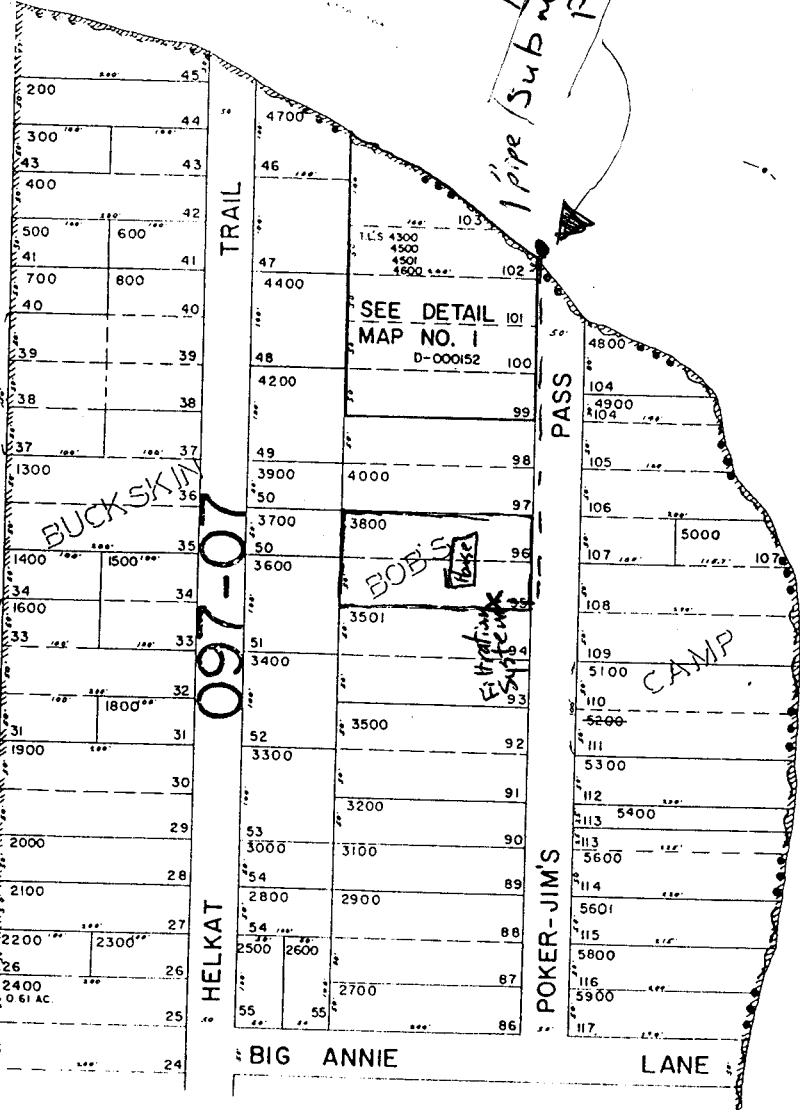
CODE LINES  
••• CITY LIMIT  
~ SCHOOL BOUNDARY  
- ALL OTHER CODES

RECEIVED  
JAN 11 1999  
DEPT. OF REVENUE  
STATE OF OREGON

See Map 19 12 26 2

1/16 COR.

1/4 COR.



LANE COUNTY

1"=100'

19s 12w S. 26

See Map 19 12 23

Scale  
1" = 200'



097-02

P.O.D.  
location coordinate

597 ft. east  
628 ft. south  
from the  
North 1/4  
corner of  
Sec. 26

See Map 19 12 25

TSILTCOOS

RECEIVED  
FEB - 1 2001  
WATER RESOURCES DEPT  
SALEM, OR

See Map 19 12 26 1 3

19 1.  
12-9-93  
CANCELLED  
5200