

THIS MAP WAS PREPARED FOR ASSESSMENT PURPOSE ONLY

SEC. 30 T.25S. R. 6W W.M.
DOUGLAS COUNTY

25 6

REVISED ON
3-24-00

SCALE 1"=1000'

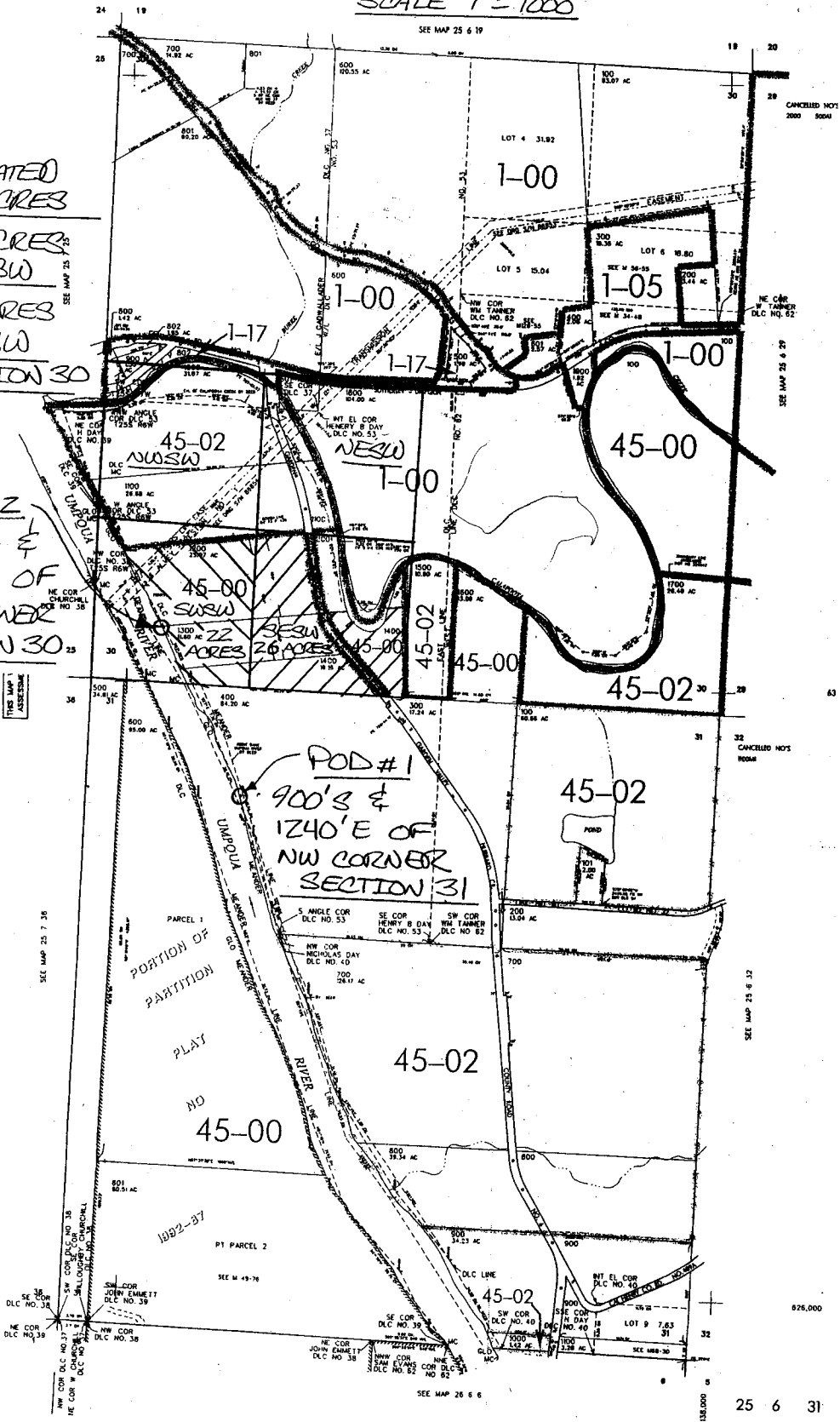
SEE MAP 25 6 19

IRRIGATED
ACRES
22 ACRES
SW SW
26 ACRES
SE SW
SECTION 30

POD #2
460' N &
600' E OF
SW CORNER
SECTION 30

RECEIVED
SEP 3 0 2002
WATER RESOURCES DEPT.
SALEM, OREGON

RECEIVED
SEP 3 0 7UL
WATER RESOURCES DEPT.
SALEM, OREGON



POD #1
900'S &
1240' E OF
NW CORNER
SECTION 31

app # S-85305 Permit # S-53900