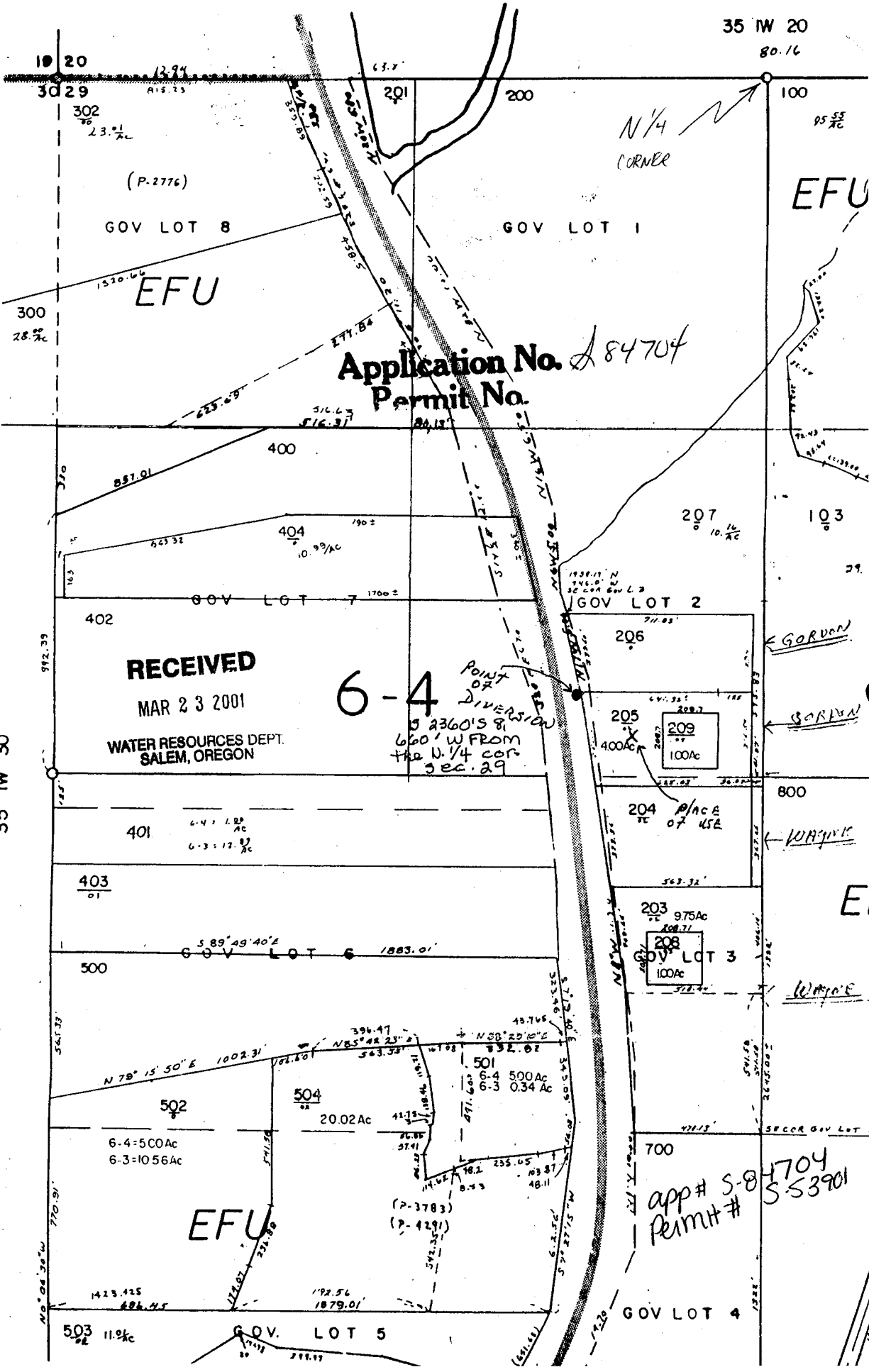


T355 RIW

4-18 90

35 W 29



(P-2776)

GOV LOT 8

GOV LOT 1

EFU

Application No. 84704
Permit No.

RECEIVED

MAR 23 2001

WATER RESOURCES DEPT.
SALEM, OREGON

6-4

POINT OF DIVERSION
2360'S @
660' W FROM
THE N. 1/4 COR.
SEC. 29

GOV LOT 2

206

205

209

100Ac

204

1/2 ac E
of 45E

203

9.75Ac

208

GOV LOT 3

100Ac

501

500Ac

6-3

0.34 Ac

502

6-4=5.00Ac
6-3=10.56Ac

504

20.02Ac

EFU

GOV LOT 4

app # 5-84704
Permit # 553901

10 20

35 W 20

30 29

80.16

302
23.1/2

12.94
A15.33

63.7

200

85.55
26

N 1/4
CORNER

1520.66

EFU

300
28.2/2

400

851.01

400

404

10.99Ac

207

10.16
Ac

103

402

GOV LOT 7

1700.2

GOV LOT 2

206

RECEIVED

MAR 23 2001

WATER RESOURCES DEPT.
SALEM, OREGON

6-4

POINT OF DIVERSION
2360'S @
660' W FROM
THE N. 1/4 COR.
SEC. 29

206

205

209

100Ac

204

1/2 ac E
of 45E

203

9.75Ac

208

GOV LOT 3

100Ac

501

500Ac

6-3

0.34 Ac

502

6-4=5.00Ac
6-3=10.56Ac

504

20.02Ac

EFU

GOV LOT 4

app # 5-84704
Permit # 553901

10 20

35 W 20

30 29

80.16

302
23.1/2

12.94
A15.33

63.7

200

85.55
26

N 1/4
CORNER

1520.66

EFU

300
28.2/2

400

851.01

400

404

10.99Ac

207

10.16
Ac

103

402

GOV LOT 7

1700.2

GOV LOT 2

206

RECEIVED

MAR 23 2001

WATER RESOURCES DEPT.
SALEM, OREGON

6-4

POINT OF DIVERSION
2360'S @
660' W FROM
THE N. 1/4 COR.
SEC. 29

206

205

209

100Ac

204

1/2 ac E
of 45E

203

9.75Ac

208

GOV LOT 3

100Ac

501

500Ac

6-3

0.34 Ac

502

6-4=5.00Ac
6-3=10.56Ac

504

20.02Ac

EFU

GOV LOT 4

app # 5-84704
Permit # 553901