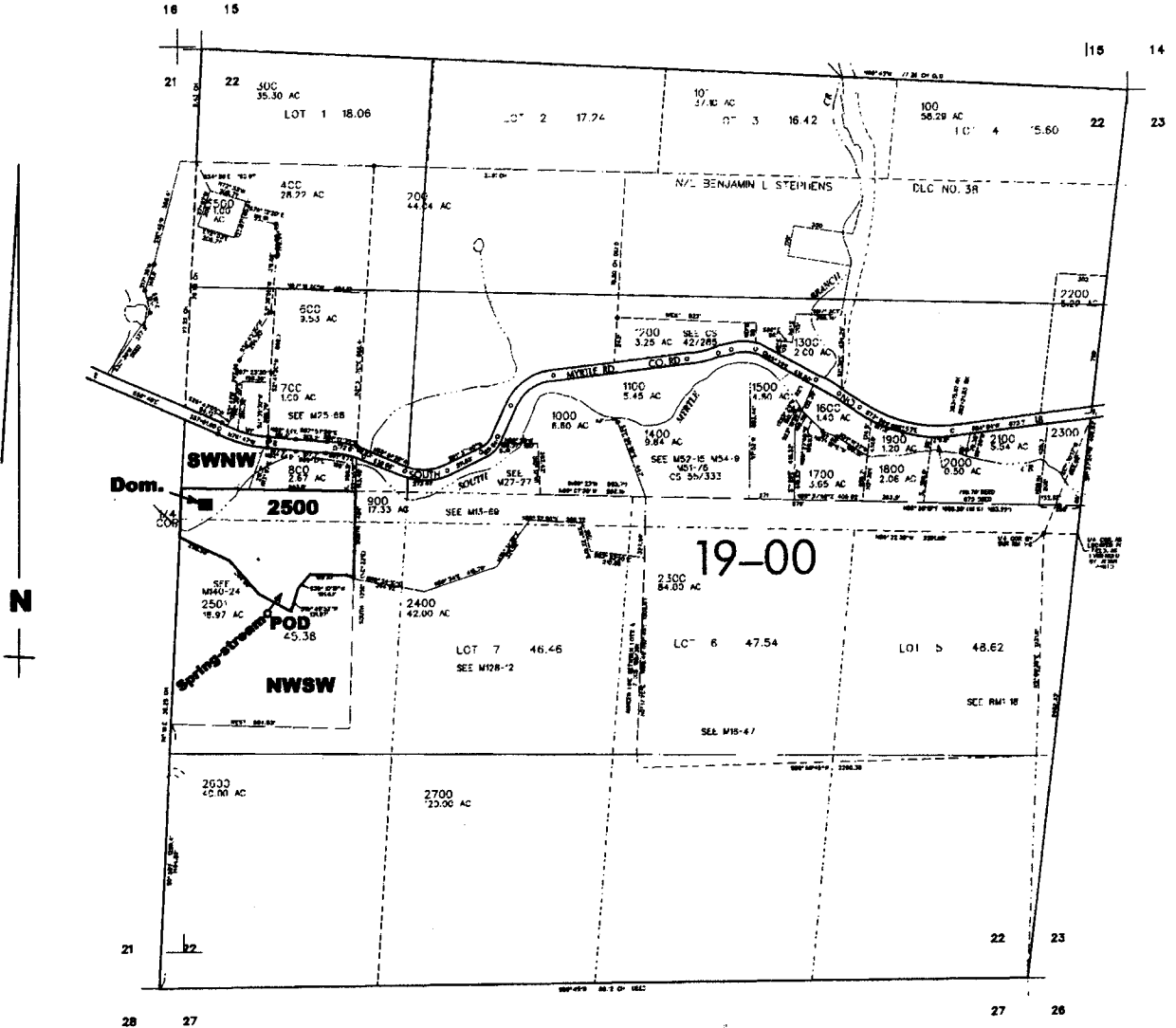


SEC. 22 T.29S. R.4 W. W.M.
DOUGLAS COUNTY

Scale: 1" = 1000'



POD is located 500 ft. S. and 500 ft. E. from the W. 1/4 corner of Sec. 22

app# 5-85359
Permit # 53958

RECEIVED

NOV 27 2002

WATER RESOURCES DEPT.
SALEM, OREGON