

MAP WAS PREPARED FOR  
ASSESSMENT PURPOSE ONLY

RECEIVED  
DEC 24 2002  
WATER RESOURCES DEPT  
SALEM, OREGON

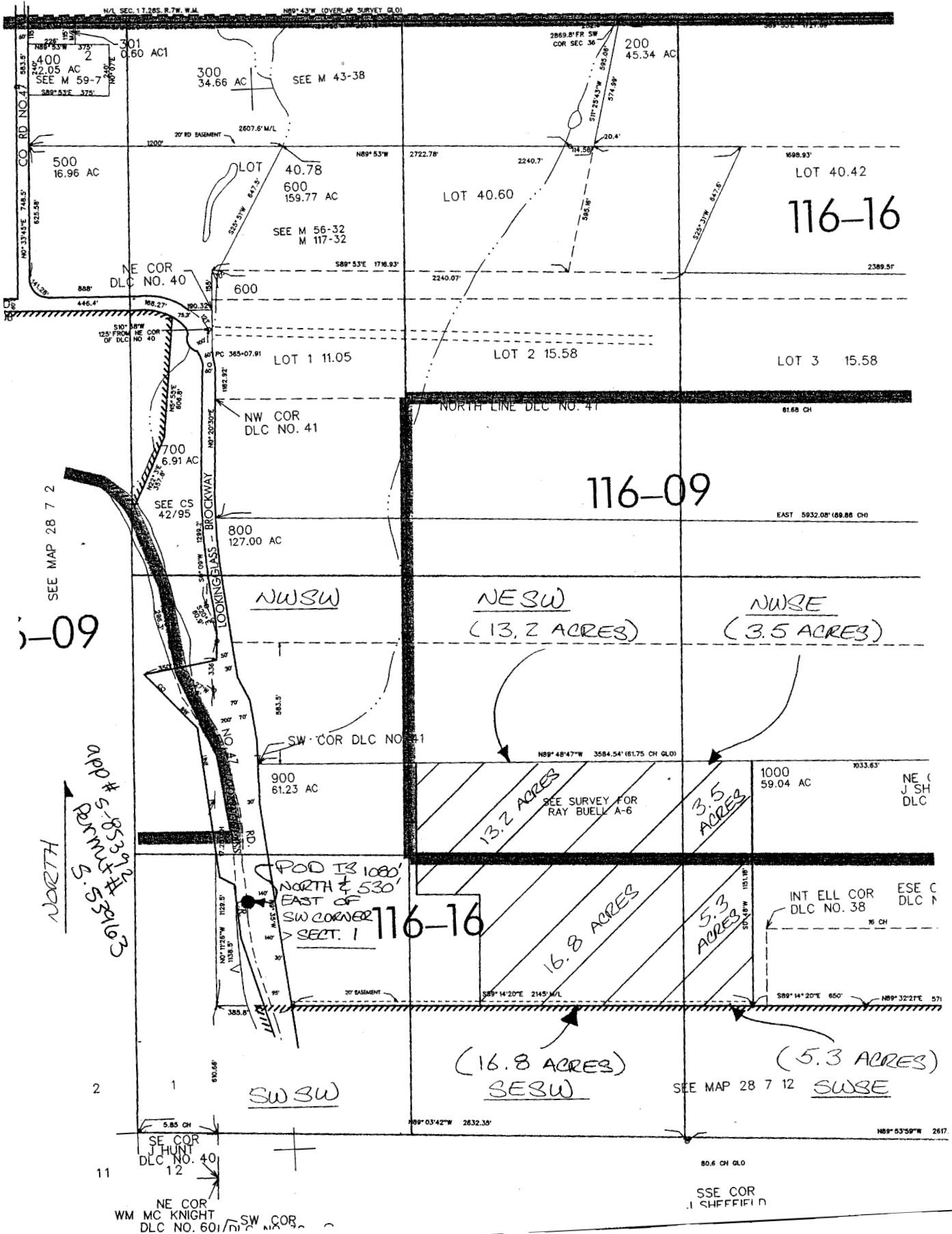
SEC. 1 T. 28 S. R. 7 W. W.M.  
DOUGLAS COUNTY

1" = 400'

SEE MAP 27 7 36C

SEE M

36



SEE MAP 28 7 2  
-09

app # S-85396  
Permit # S-3463

2

1

11

SE COR  
J HUNT  
DLC NO. 40  
12

NE COR  
WM MC KNIGHT  
DLC NO. 601  
SW COR

80.6 CH GLO

SSE COR  
J SHEFFIELD

N89°53'59"W 2617