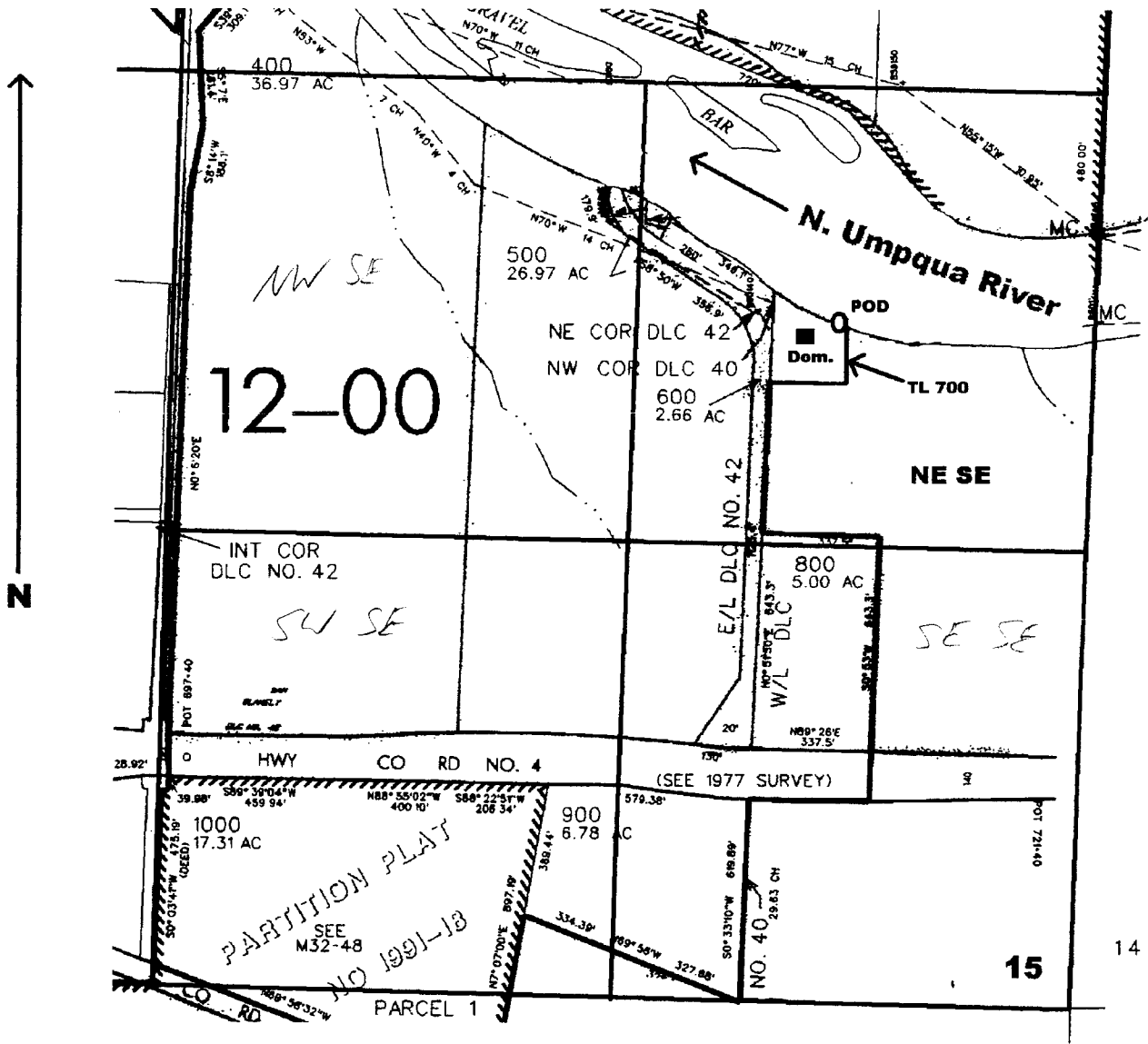


SE 1/4, SEC. 15, T. 26 S., R. 4 W., W.M.

Scale: 1" = 500'



POD located 1950 ft. N. and 700 ft. W. from the S.E. corner of Sec. 15

app # S-85559
Permit # S-53975

RECEIVED

APR 16 2003

WATER RESOURCES DEPT.
SALEM, OREGON