

Southern portion of Lane County tax map 19 12 23 4

SE 1/4 Sec. 23 T.19S. R. 12 W.W.M.

1" = 200'

097-07

097-16

097-02

SILTCOOS LAKE

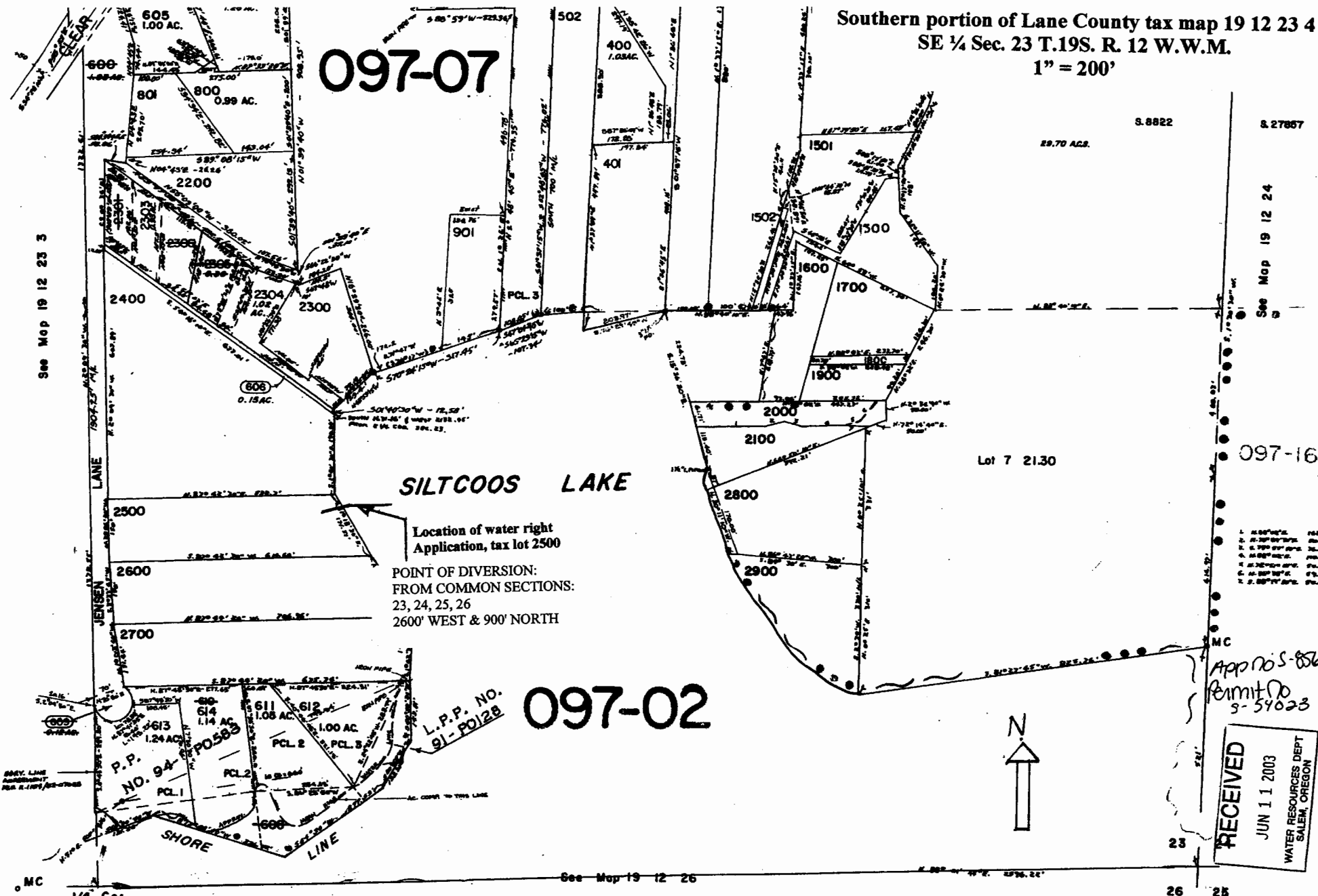
Location of water right Application, tax lot 2500

POINT OF DIVERSION:  
FROM COMMON SECTIONS:  
23, 24, 25, 26  
2600' WEST & 900' NORTH

L.P.P. NO.  
91- P0128

App No 5-8564  
Permit No  
9-54023

RECEIVED  
JUN 11 2003  
WATER RESOURCES DEPT  
SALEM, OREGON



See Map 19 12 23 3

See Map 19 12 24

See Map 19 12 26

23  
26  
25