

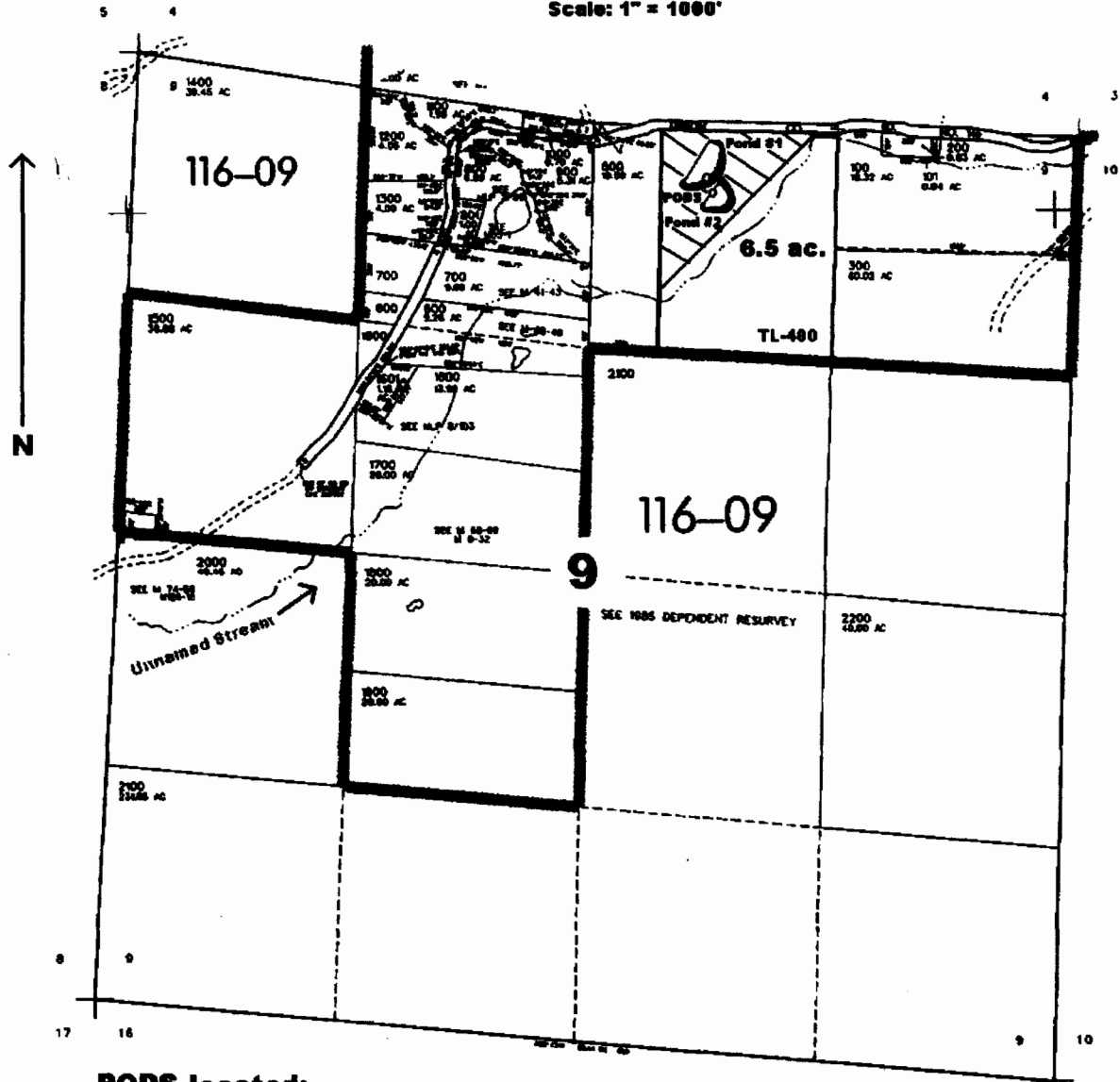
RECEIVED

JUL 07 2003

WATER RESOURCES DEPT.
SALEM, OREGON

SEC. 9 T.28S. R. 7W W.M.
DOUGLAS COUNTY

Scale: 1" = 1000'



PODS located:

Pond #1: 250 ft. S. and 2050 ft. W. }

Pond #2: 350 ft. S. and 2050 ft. W. } from the NE corner of Sec. 9

app no S-85694
Permit no S-54028