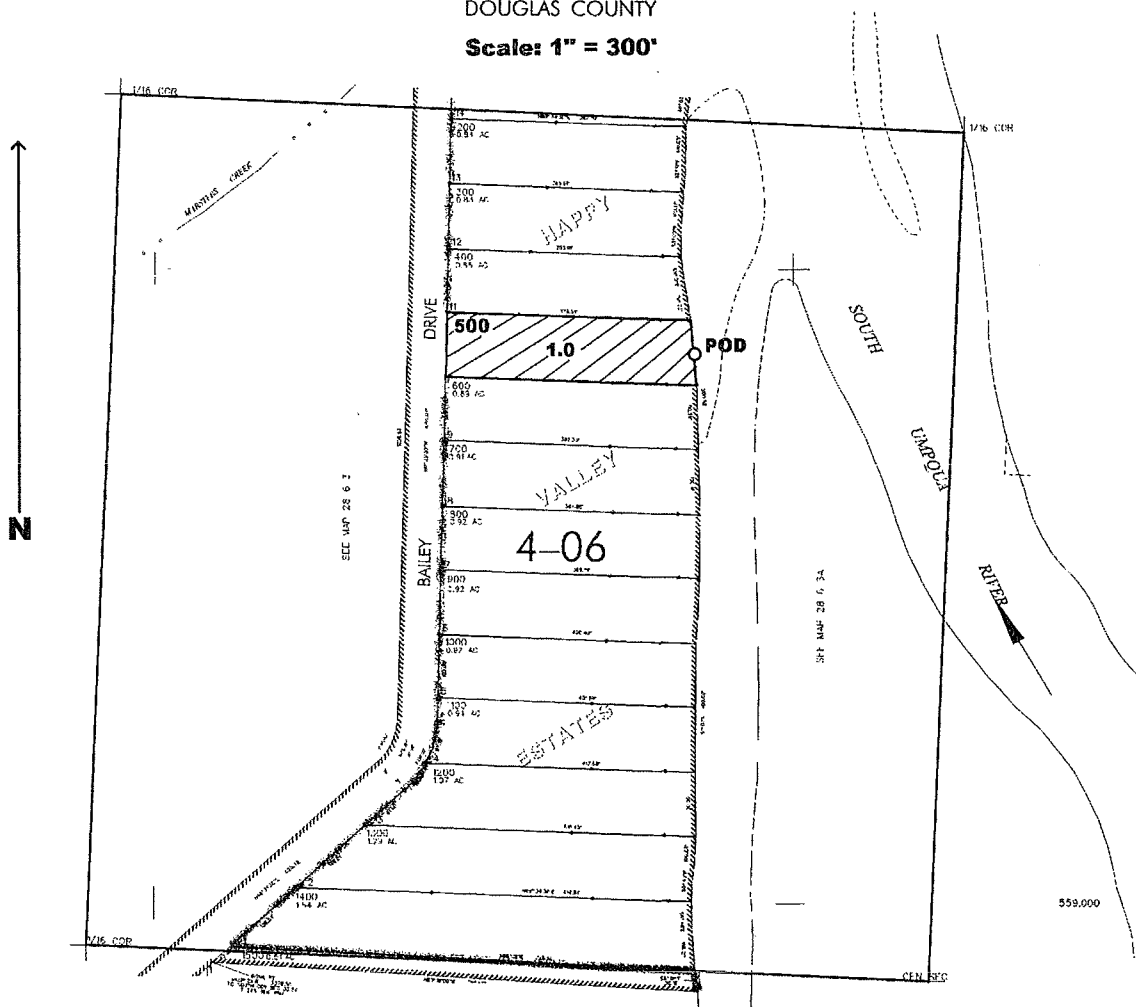


RECEIVED  
MAY 23 2003  
WATER RESOURCES DEPT.  
SALEM, OREGON

SE1/4 NW1/4 SEC. 3 T.28S. R. 6W W.M.  
DOUGLAS COUNTY

Scale: 1" = 300'



POD is located 960 ft. N. and 400 ft. W. from the center of Sec. 3

App # S-85623  
permit - S 54034