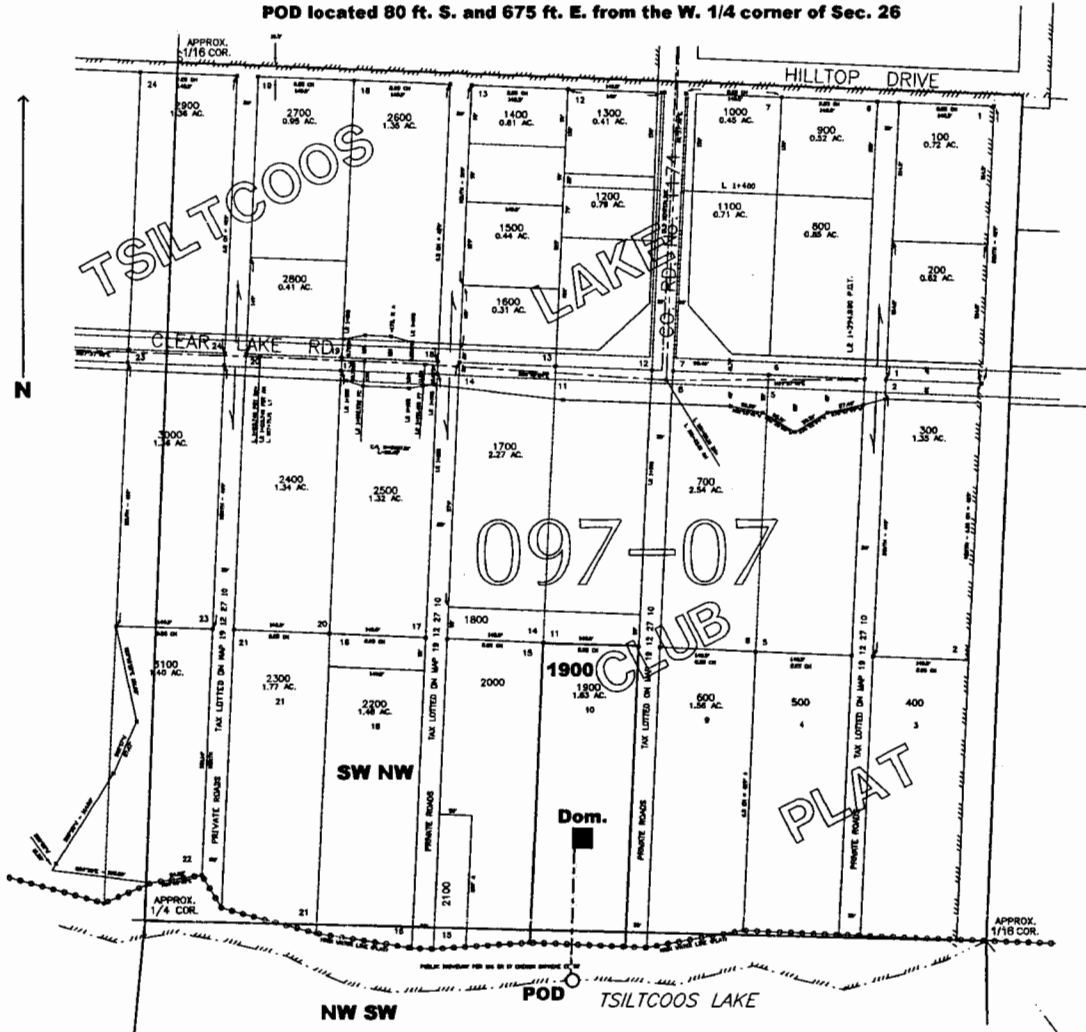


SECTION 26 T.19S. R.12W. W.M.
LANE COUNTY

Scale: 1" = 300'

POD located 80 ft. S. and 675 ft. E. from the W. 1/4 corner of Sec. 26



Application # S-85632
Permit # 54035

RECEIVED
JUN 04 2003
WATER RESOURCES DEPT
SALEM, OREGON