

MORRIS

NW1/4 NW1/4 Sec. 25 T.19S. R.12 W.W.M.

19 12 25 2 2

LANE COUNTY

Scale: 1" = 250'

CANCELLED  
1899

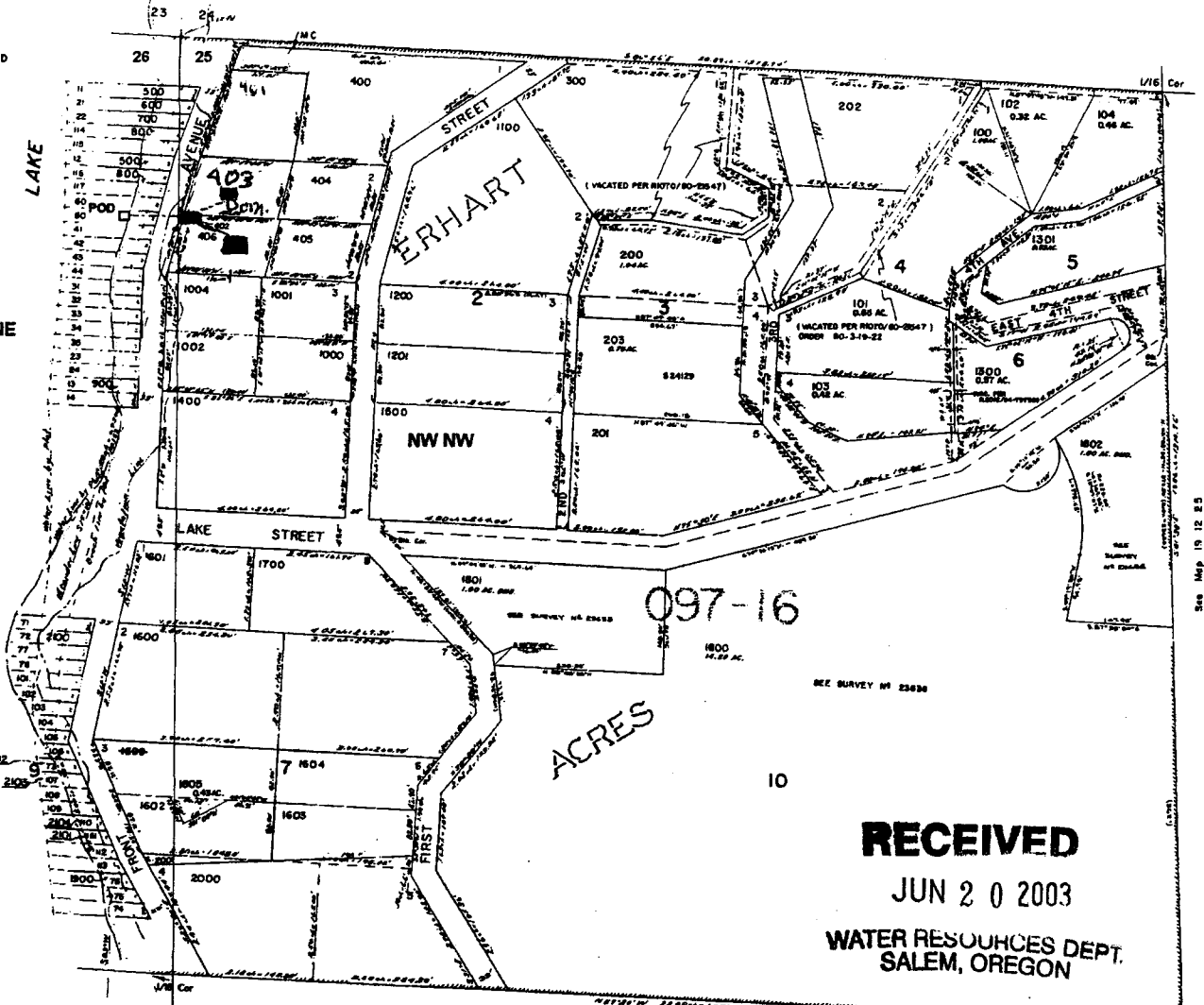
LAKE AVENUE

NE NE

See Map 19 12

N

TSILTCOOS



POD is located 250 ft. S. and 75 ft. W. from NW corner of Sec. 25

**RECEIVED**

JUN 20 2003

WATER RESOURCES DEPT.  
SALEM, OREGON

Legal is 19 12 25 22 00406

### While You Were Out

Date: \_\_\_\_\_ Time: \_\_\_\_\_

For: \_\_\_\_\_

From: \_\_\_\_\_

Phone #: \_\_\_\_\_

- Telephoned
- Wants to see you
- Returned your call
- Was here to see you
- Please call
- Will call again
- URGENT

Message: SCALE

NEEDS TO  
BE LARGER  
& EVEN  
1" = 200 FT

App # 85659

Permit # 54040