

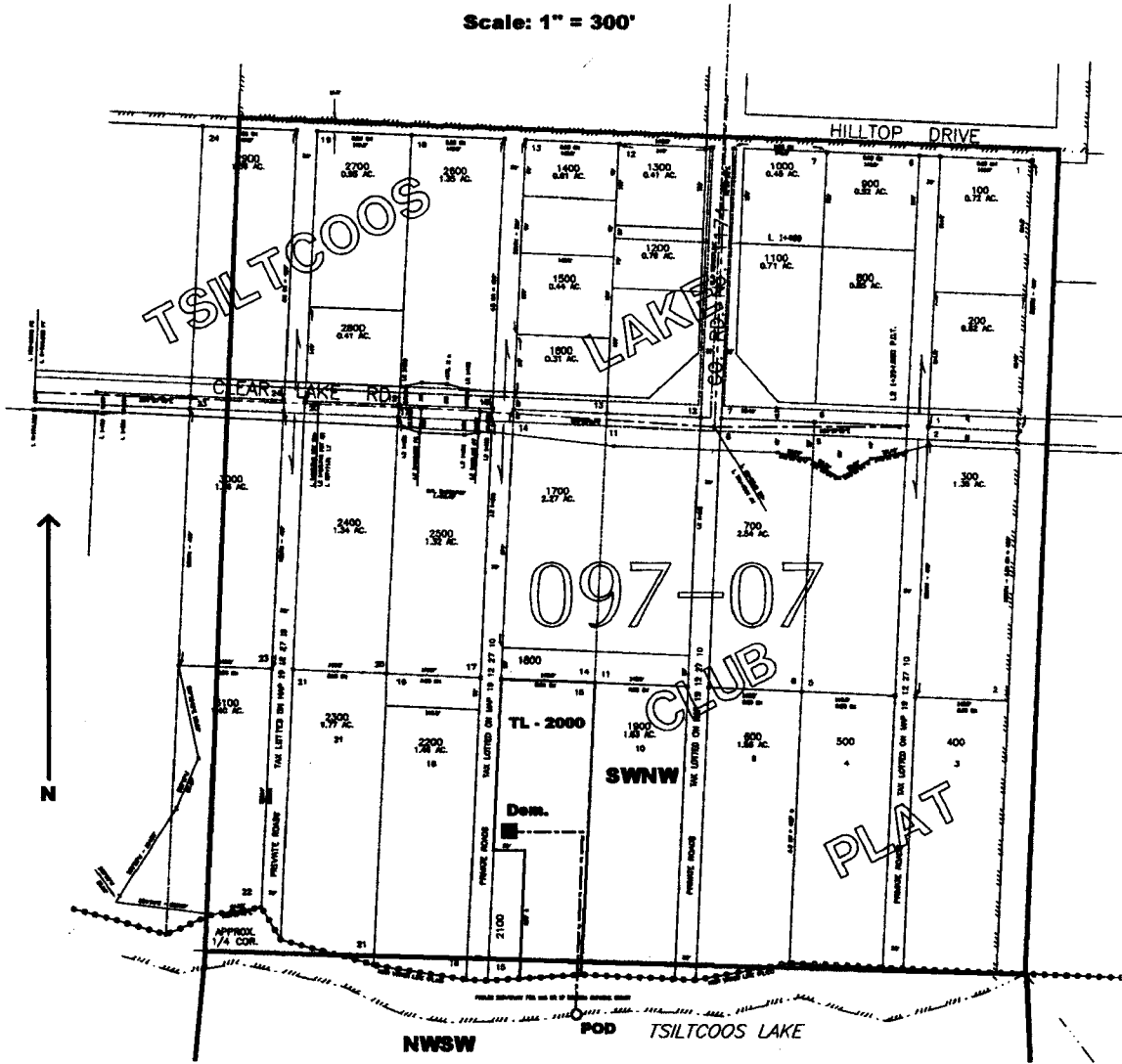
RECEIVED

JUN 27 2003

WATER RESOURCES DEPT
SALEM, OREGON

SECTION 26 T.19S. R.12W. W.M.
LANE COUNTY

Scale: 1" = 300'



POD is located 85 ft. S. and 600 ft. E. from the W. 1/4 corner of Sec. 26

App No S-85669
Permit No 54044