

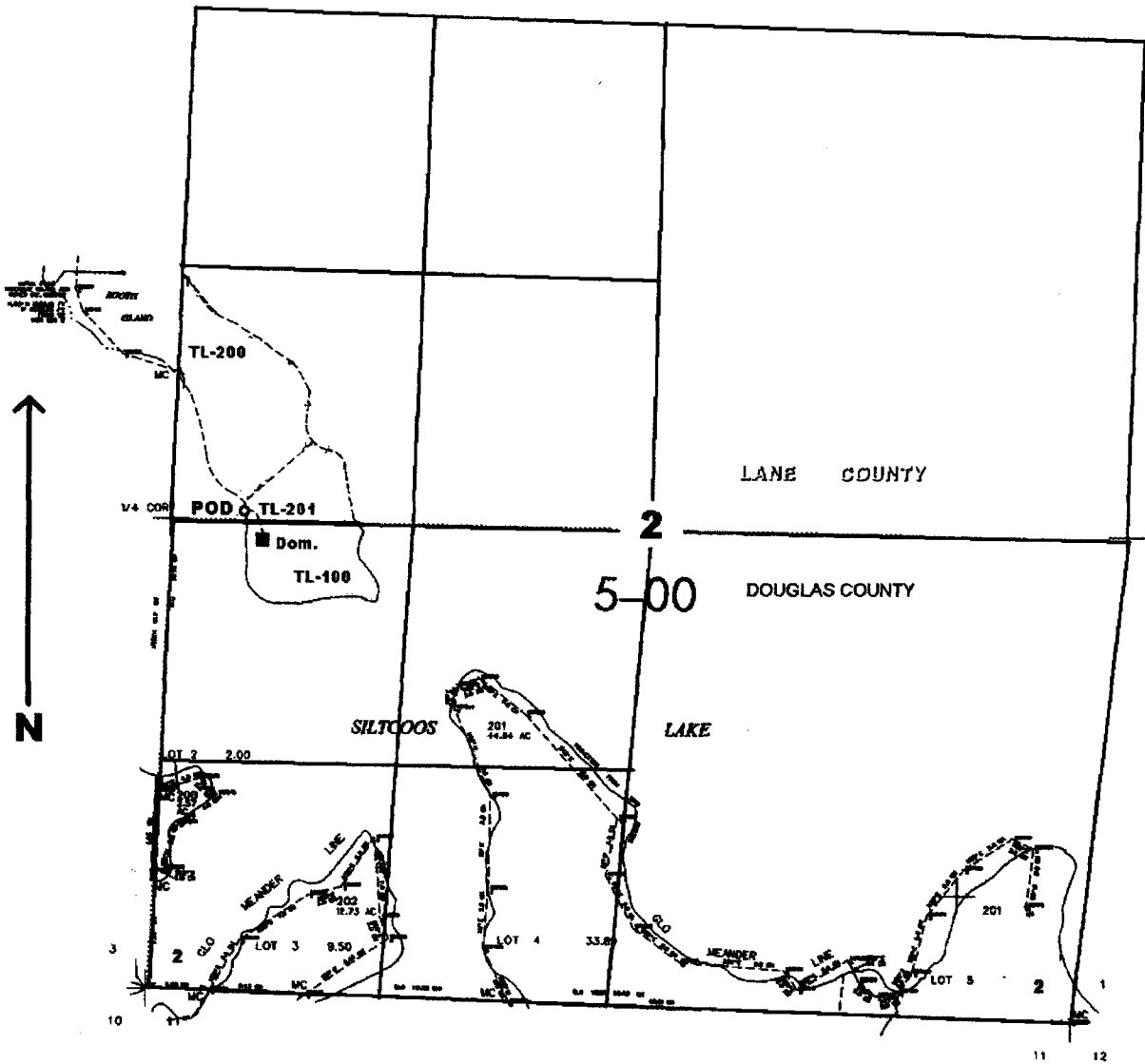
RECEIVED

JUN 27 2003

WATER RESOURCES DEPT  
SALEM, OREGON

SEC. 2 T.20S. R.12W. W.M.

Scale: 1" = 1000'



POD is located 50 ft. N. and 400 ft. E. from the W. 1/4 corner of Sec. 2

App no 5-85670  
Permit no 54045