

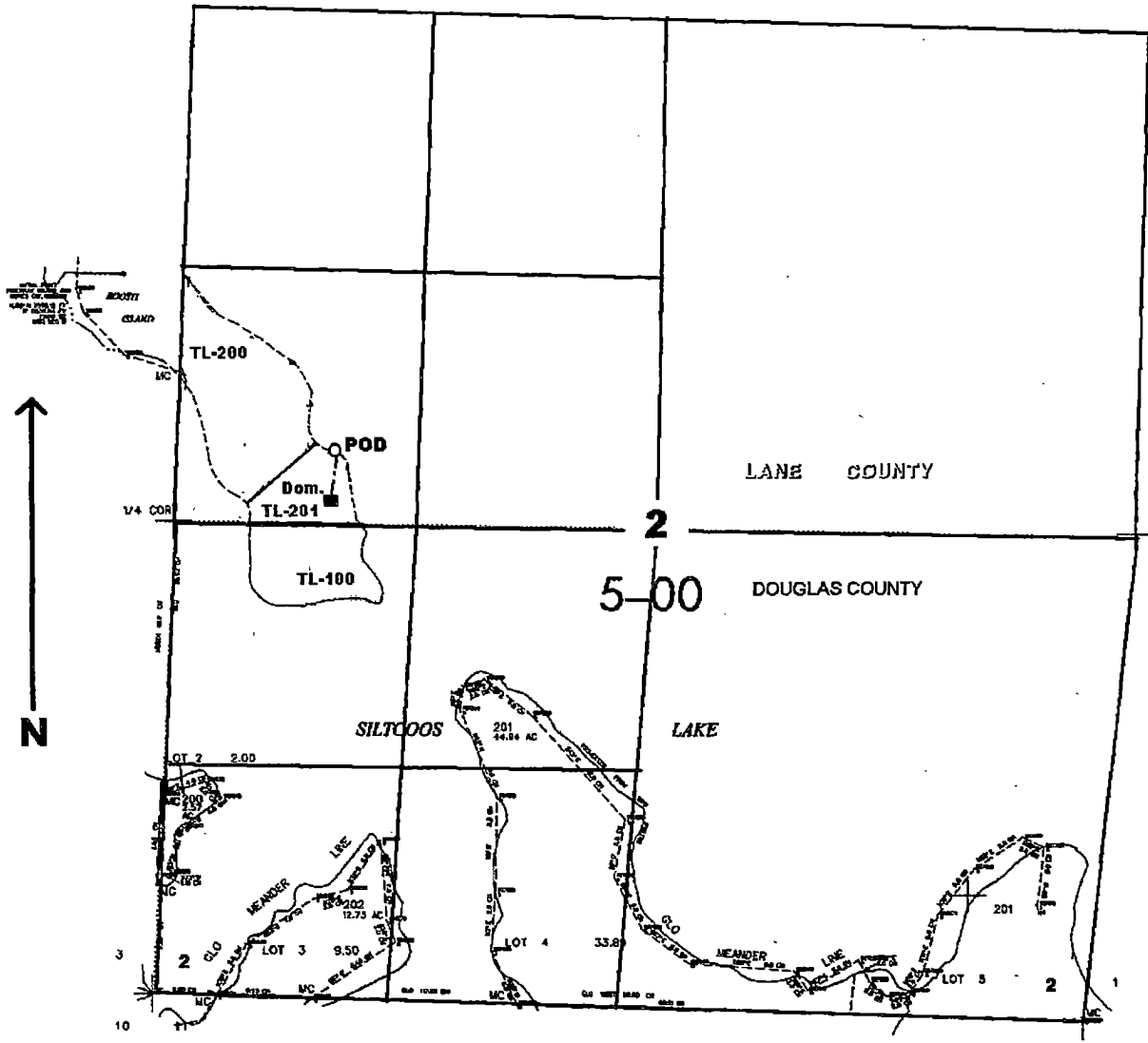
RECEIVED

JUN 27 2003

WATER RESOURCES DEPT.
SALEM, OREGON

SEC. 2 T.20S. R.12W. W.M.

Scale: 1" = 1000'



POD is located 400 ft. N. and 900 ft. E. from the W. 1/4 corner of Sec. 2

App No S-85671
Permit # 54046