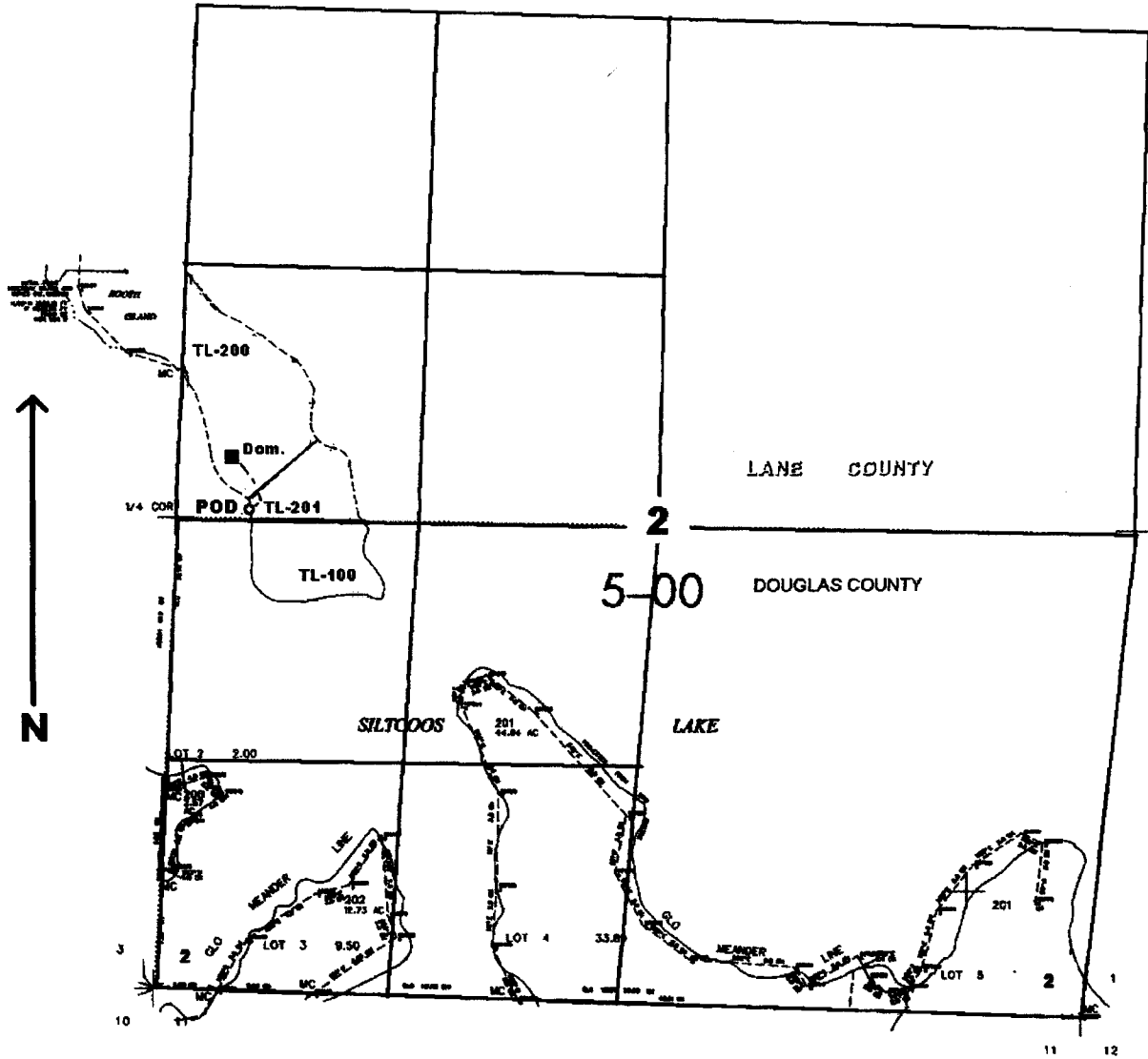


SEC. 2 T.20S. R.12W. W.M.

Scale: 1" = 1000'



POD is located 50 ft. N. and 400 ft. E. from the W. 1/4 corner of Sec. 2

app No S-85672  
Permit # 54047

**RECEIVED**

JUN 27 2003

WATER RESOURCES DEPT.  
SALEM, OREGON